



Products of the Season

Sportswear / Outerwear

Agenda

- Products of the Season - Rewards Program
- Selling Tools
- Top 4 Outerwear Models
- Fabric Collections to Consider
- New Additions
- Converting Measurements
- Ordering in Workflow

Products of the Season

Rewards Program

We are thrilled to announce our new "Products of the Season" rewards program! Starting from September 1st, every eligible item you sell will contribute to your rewards. This is an exciting opportunity for us to give back and show our appreciation.

Program Details:

- **Eligible Products:** Our ‘Products of the Season’ rewards program is applicable for the following items: Field Jacket, Bomber Jacket, Casual Zip Vest, Active Vest, Car Coat, and Top Coat.
- **Reward Threshold:** For every 5 units sold (of any combination of the eligible products), you'll receive a \$300 open credit. This credit can be utilized on any customer for any type of product sold.
- **Monthly Rewards Cycle:** Eligible items sold from September 1st to 30th contribute to the first round of rewards. The count of eligible garments resets monthly and does not roll over. For example, selling 6 units in September will earn you \$300 in credits.

Products of the Season REWARDS PROGRAM	
Eligible Garments: Active Vest, Casual Zip Vest, Bomber Jacket, Field Jacket, Car Coat, Topcoat	
Garments Sold	\$300 Credit
1 - 4	\$0
5 - 9	\$300
10 - 14	\$600
15 - 19	\$900
20 - 24	\$1200
25 - 29	\$1500

Outerwear Pre-Pack

Products of the Season

The other tools to help you sell!

Products Included:

- Casual Zip Vest (Kensington Royal Blue Solid Hopsack w/Navy Suede Yoke)
- Bomber w/knit collar (Navy Suede)
- 4B Zippered Car Coat aka: Rain Jacket (Navy Minotech)
- Field Jacket (Kensington Navy Solid Hopsack)

Limited Sets Available

Cost: \$699



Top 4 Outerwear Models

#1 Casual Zip Vest - Our #1 Seller!

- The *BEST* selling sportswear item in our line up and in every retail store/ golf shop....who doesn't love casual zip vest.
- The perfect transitional coat for September / November for everywhere USA.
- Perfect fall/winter coat for the Southeast and west coast
- Now available with micro suede front/back yoke.

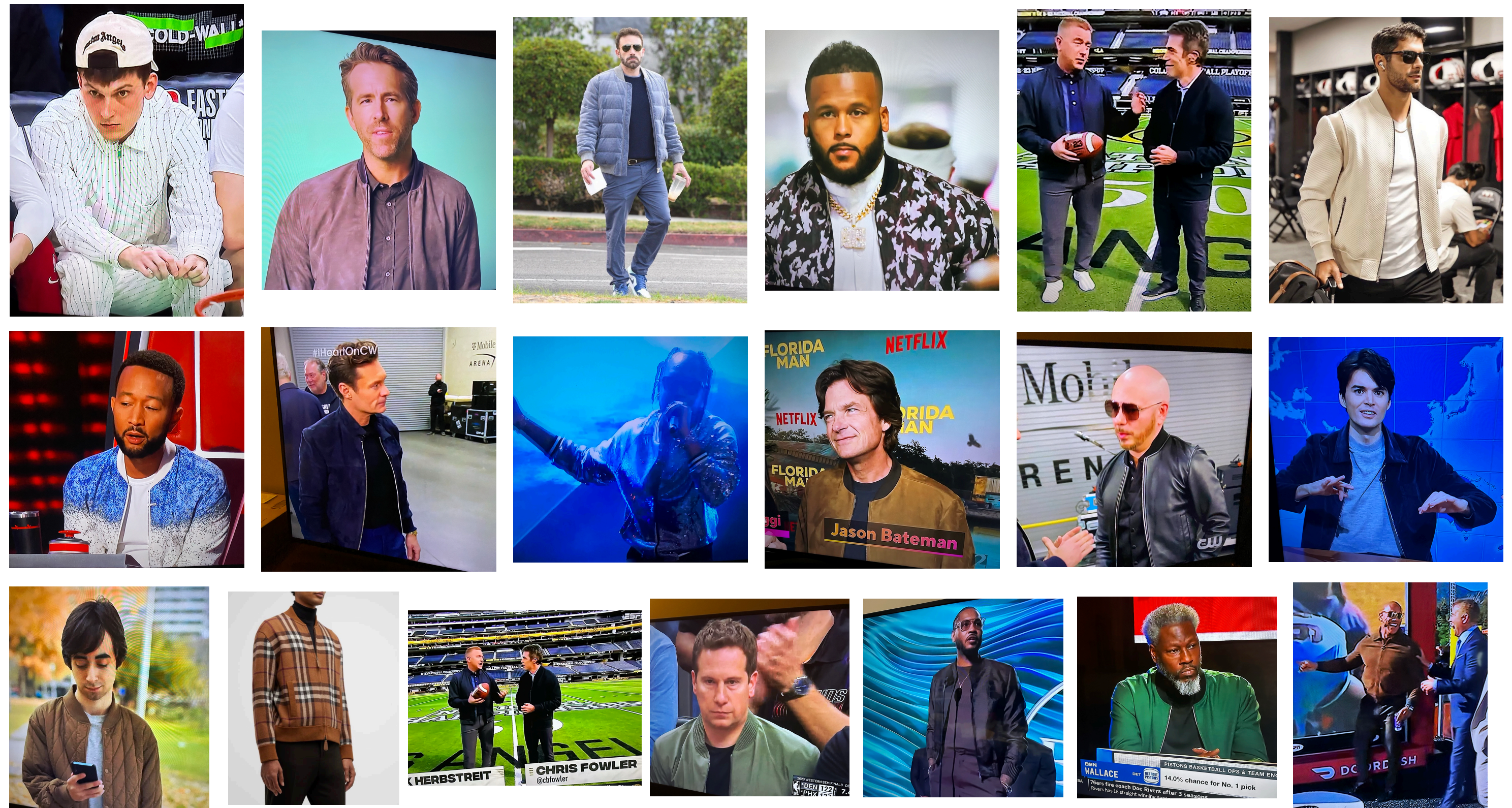


Top 4 Outerwear Models

#2 Bomber Jacket

Your ticket to new business...Bomber has the highest possibly to get you a referral. Don't be late to the party!

AS SEEN ON T.V.



Top 4 Outerwear Models

#3 Convenience Coat aka Hybrid Coat aka Four Button Zippered Car Coat aka Car4Z

Done in a tech water resistant fabric like Minotech is the one garment every guy needs.

It's the "your customer will thank you later" coat. Casual, dressy, carefree...throw it in the back seat coat. With It's tech smart look (horizontal front zipper, back shoulder darts)



Minotech Raincoat
The coat that every guy in America needs!

Top 4 Outerwear Models

#4 Field Jacket

- A great sport coat addition for some of the more casual outfits/events/
The sure way to make sure you're not under dressed or over dressed
- Elevated sport coat; Town & Country(Donegal) verses City
Life(Hopsack)



Special Call Out

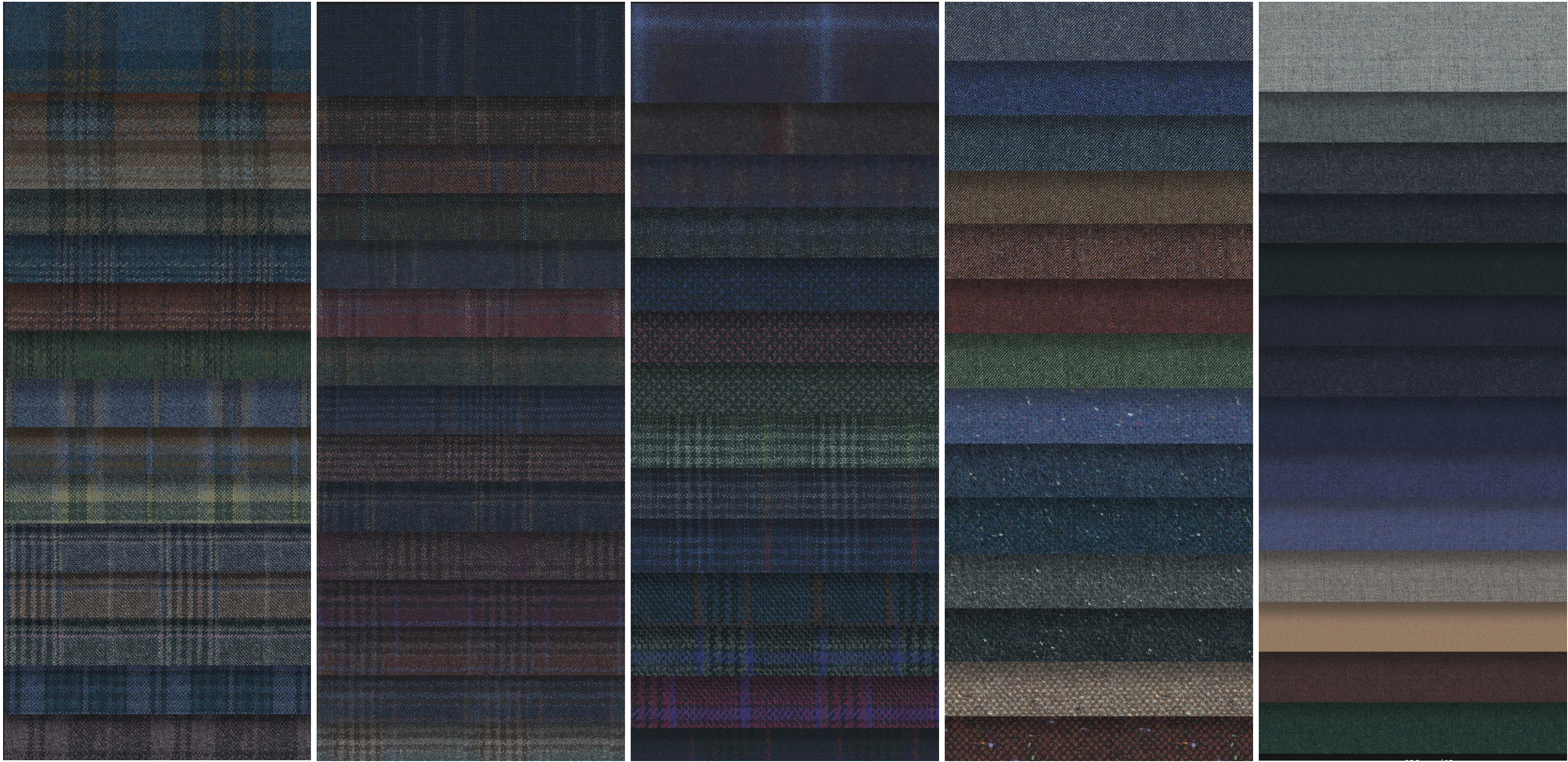
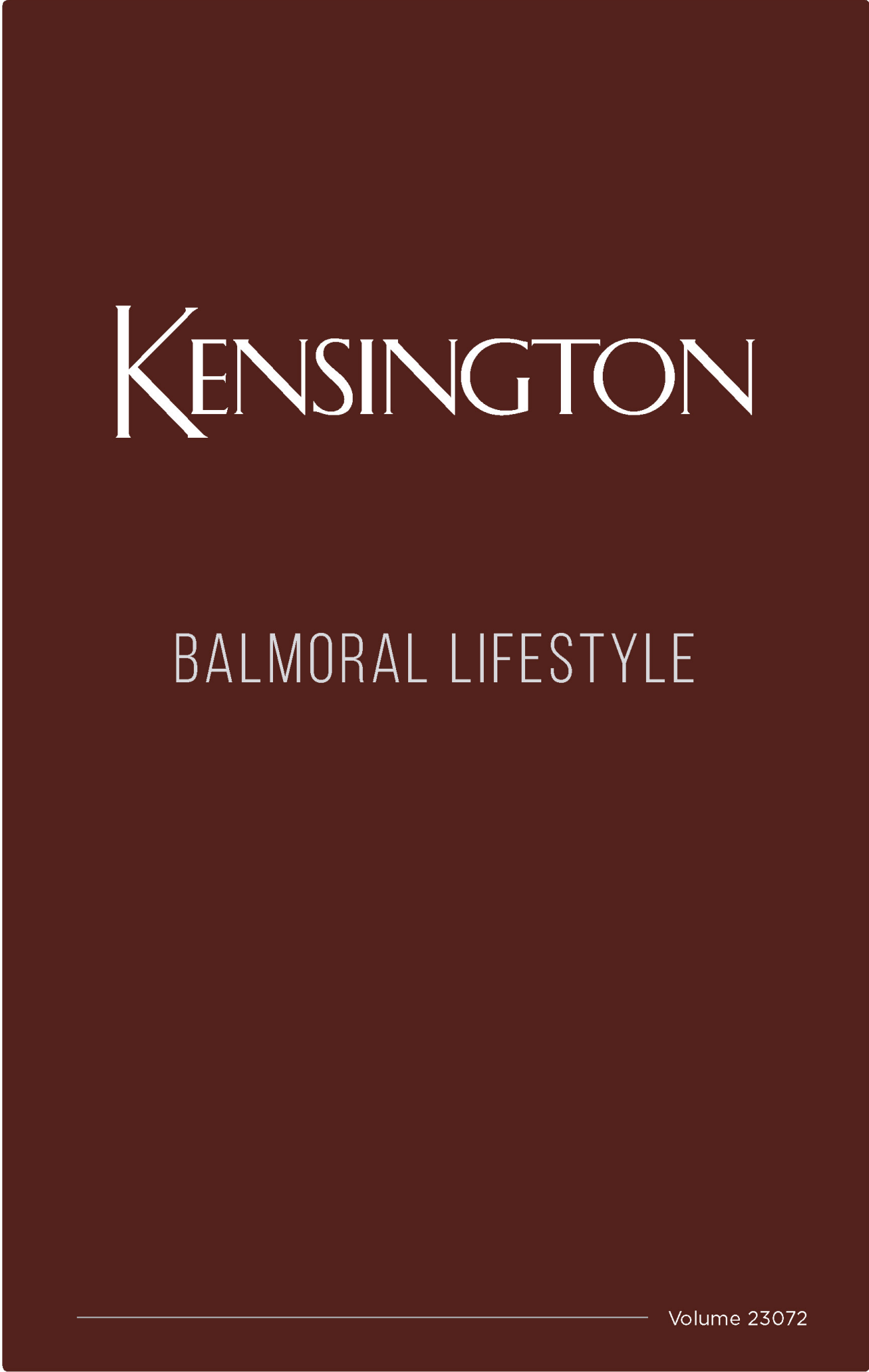
The Active Vest

- Consider in Collegiate Colors - mix and match microsuede with the knit options
- The Jeff Murphy Way...



Auburn Active Vest -
Shown with Orange Microsuede and
Navy Knit

Great Fabric Collections to Consider



Great Fabric Collections to Consider



11-25
Midnight Navy Solid 375
Gram

Zippers

Recent Additions

- YKK zippers in Gunmetal and Gold finish
- Designed to elevate the style and functionality of outerwear, these zippers add flair and sophistication to any outfit
- They are not just functional; they are fashion-forward accessories that take your garments to the next level

Some key things to note:

- Available in standard nine colors to perfectly match our rib knits, ensuring seamless coordination with bomber jackets or active vests.
- All front #5 zippers feature dual sliders, providing unparalleled comfort even in a sitting position.
- Need side pockets with zippers? We've got you covered! Both the Gunmetal and Gold finishes are available as side pocket zippers, offering versatility and convenience.
- No upcharge for zippers
- Standard Nylon Zippers also available.
- Available on all garments which call for zippers: Car4Z, Field Jacket, Bomber Jacket, Casual Zip Vest, Active Vest

Gunmetal Zippers - 14 Series



Gold Finish Zippers - 15 Series



Knits



Suede Yoke Option on Casual Zip Vest

Recent Additions

- Yoke Style: Standard or Western
- Yoke Material: Shell or Suede

Standard Yoke

Front and Back Yoke
Style



Western Yoke

Front and Back Yoke
Style



When selecting Standard or Western it will be applied to the front and the back. You do not have the option to mix and match.

Let's talk fit | Casual Zip Vest

K.I.S.S. - Converting your Sport Coat Measurements

- Casual Zip Vest - 3 steps

1. Reduce PTP 1 1/2-2
2. Shorten Coat length 3 1/2- 4
3. Increase half girth 1/2-3/4

* Go with a Regular Fit

** For the active vest...shorten 1/2 more and add your pant waist



Let's talk fit | Bomber Jacket

K.I.S.S. - Converting your Sport Coat Measurements

- Bomber Jacket - 4 steps
 1. Increase PTP 1"
 2. Increase Sleeve 1"
 3. Increase half girth 1 3/4
 4. Shorten Coat length 2 1/2-3 1/2
- ** Go with a Trim Fit



Let's talk fit | Car Coat / Field Jacket

K.I.S.S. - Converting your Sport Coat Measurements

All other outerwear: Car Coat / Field Jacket

A. When making to wear over a sweater, vest or shirt:

1. Add coat length
2. Increase 1/2 " (Pro-Tip).

The pattern will automatically come with plus 1/2" on PTP, Sleeve, and 1/2" half girth

B. When making to wear over a suit coat:

1. Add coat length
2. Go up a full size; Example 40 to 42
3. Add 1/2" to PTP, Sleeve, and Half girth



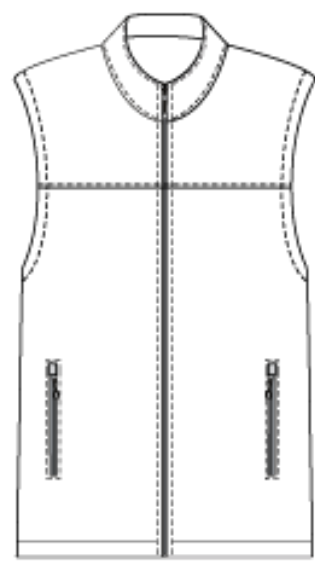
Let's talk fit | Topcoat

K.I.S.S. - Converting your Sport Coat Measurements

All other outerwear: Topcoat

- Add topcoat length.
- Topcoat models are patterned to be worn over a suit/sport coat and hit below the knee.
- Topcoat Pattern: Half Girth +1", Point to Point +1", Sleeves +1" (built into the pattern at the factory level)





Casual Zip Vest

Ordering in Workflow

Add Item :: DO-704291 ✕

Garment Type: Vest (CV) ▼

Tailoring Grade: T2iD Casual Vest ▼

Vest

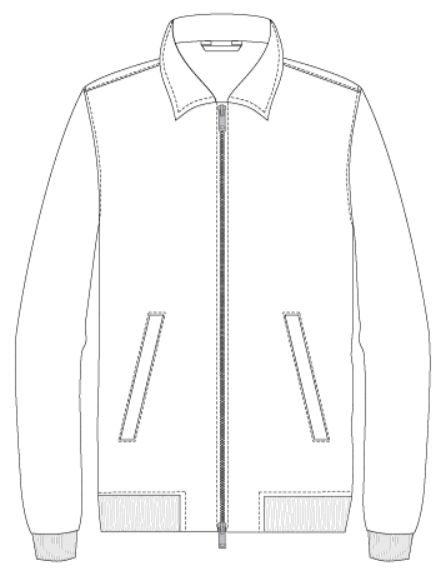
Model: Casual Zip Vest ▼

Block: Standard ▼

Garment Type → CV

Tailoring Grade → T2iD Casual Vest

Model → Casual Zip Vest



Bomber Jacket

Ordering in Workflow

Add Item :: DO-704291 ✕

Garment Type:

Tailoring Grade:

Jacket

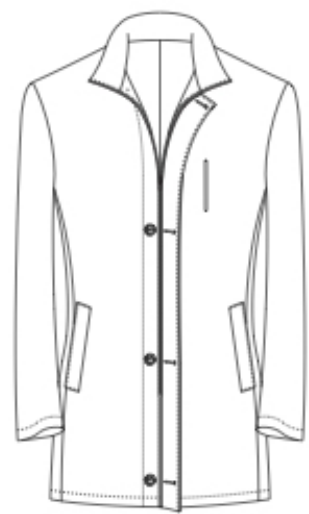
Model:

Block:

Garment Type → Casual Jacket

Tailoring Grade → T2iD Casual Jacket

Model → Bomber Jacket



Four Button Zippered Car Coat

Ordering in Workflow

Add Item :: DO-704291 ✕

Garment Type:

Tailoring Grade:

Outerwear

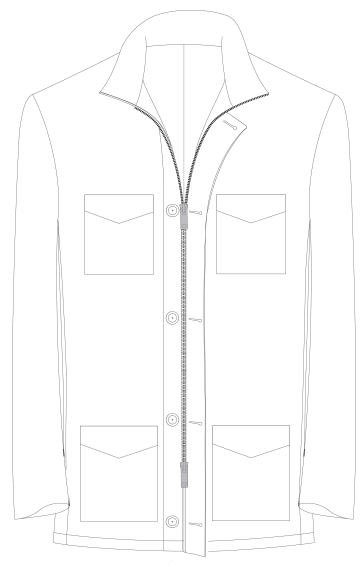
Model:

Block:

Garment Type → Outerwear (CTOPC)

Tailoring Grade → T2iD Outerwear

Model → Four Button Zippered Car Coat



Five Button Zippered Field Jacket

Ordering in Workflow

Add Item :: DO-704291 ✕

Garment Type:

Tailoring Grade:

Outerwear

Model:

Block:

Garment Type → Outerwear (CTOPC)

Tailoring Grade → T2iD Outerwear

Model → Five Button Zippered Field Jacket

Trinity Digital Marketing Cooperative

T.D.M.C

The images featured in this email are part of the Trinity Digital Marketing Cooperative. Joining TDMC will grant you access to videos and images that you can use to communicate visually with existing and prospective clients.

\$199 Billed Bi-Annually

January - June (Spring Subscription)

August - December (Fall Subscription)

Contact Lauren or Dana to sign up / [Learn More](#)



THANK YOU!

Questions. Suggestions. Comments.

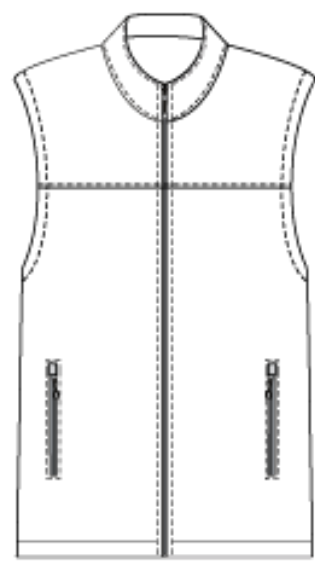
Contact Us -

Dana • ddean@trinity-apparel.com

Lauren • ldale@trinity-apparel.com



Casual Zip Vest

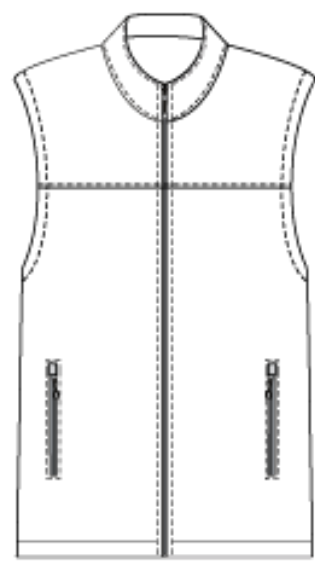


Casual Zip Vest

Styling Features

- Stand Up Collar
- Quality 2-way Zippers (9 colors)
- Exterior Lower Pockets: Slant Welt, Slant Welt with Zipper, Slant Patch, or Vertical Zipper
- Interior Breast Pockets: None or Double Besom
- Interior Lower Card Pockets: None, Double Besom or Patch
- Contrast Pocket Cording: Use Shell Fabric or Lining Fabric
- Cotton Pocketing

If you use custom models, we recommend creating a new model for the Casual Zip Vest. Please view the option list for creating a Casual Zip Vest Custom Model.



Casual Zip Vest

Measure your client for a Casual Zip Vest with 5 simple steps

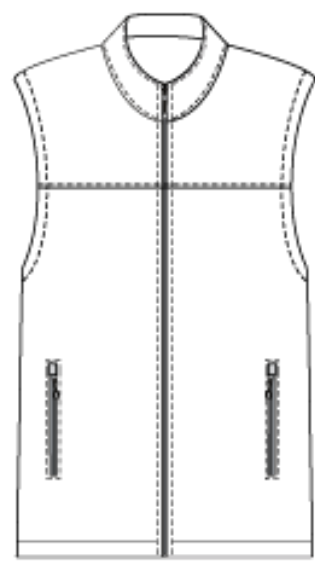
1. Fit Preference for a Vest | Body Description

- Know the Fit and Know your Client - Is your customer looking for a relaxed fit or expecting the vest to be a little more trim and modern?
- For a Relaxed Fit, choose Regular Fit (+4") • Selecting a Regular fit and entering 40 as skin chest will result in a finished vest chest of 44.
- For a closer fitting garment, choose Trim Fit (+3")

2. Skin Chest | Vest Measurement

3. Vest Half- Girth | Vest Measurement

- If you have your client's coat half girth**, you will add $\frac{1}{2}$ " when entering measurements for the Vest Half-Girth.
- For example, A 20 "Coat" half girth becomes a 20 $\frac{1}{2}$ "Vest" half girth. A half girth is simply half of the finished Vest waist; A 20" half girth is a total finished vest waist of 40" (20" x 2= 40").
- The half girth (total finished vest waist) will determine the vest seat/hip measurement. They will be the same.
- For example, a 20" half girth (40" finished vest waist) pattern will produce a 40" finished vest seat/hip. So there's no need to enter a seat/hip measurement.



Casual Zip Vest

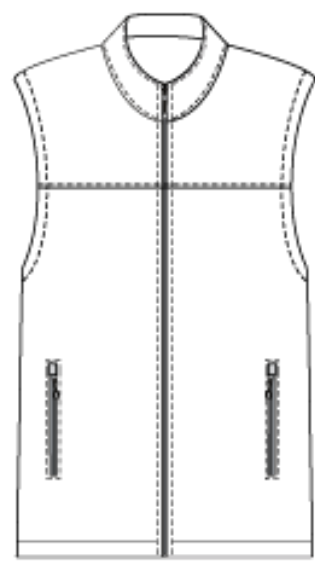
Measure your client for a Casual Zip Vest with 5 simple steps

4. Vest Point to Point | Vest Measurement

- Vest PTP should be around 1.5"- 2" smaller than a coat PTP.
- For Example, if your client has a 19" Coat PTP then his Vest PTP should be between 17"- 17.5".

5. Back Length | Vest Measurement

- Please study our new published spec charts to fully understand the new model.
- ** A common formula for determining COAT half girth:
- (Coat waist + Seat) Divided by 4 plus 2" for classic fit, plus 1 ½" modern fit, or plus 1" for trim fit
- Don't Forget! Add 1/2" to your normal coat half girth when making these zip vests.



Casual Zip Vest

Tips for Success 🎯

A couple of things to consider to ensure a good fit.

This vest is designed to be worn sporty, so the pattern is fairly straight (not meant for hourglass shaping). We recommend you fit accordingly.

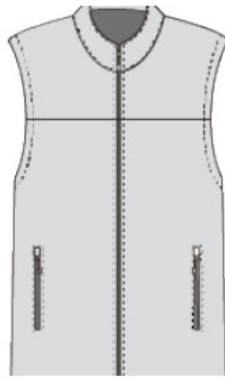
- Trying to fit this garment too close in the waistline will result in an ill-fitting garment that will probably be too tight on the seat/hip.
- For this product, think sportswear fitting...small, medium, large. NOT Exact bespoke tailored fitting. Slightly oversized.
- It's a shell to be worn over a shirt/sweater as a layering piece.

If you have a client with a larger seat/hip make sure to get the waistline large enough to accommodate. Remember the finished waist will dictate the finished seat/hip.

- This product may not be right for clients with excessively large mid-sections. So be mindful when fitting overly portly clients.
- While portly is an option, noting portly will only add 1" to the front of the vest length.
- The chest size cutoff for the product is size 60.

If your client has a great fitting casual sport vest, you can replicate the fit by just measuring that garment and making minor adjustments where needed.

- Measure that finished garment (PTP, Finished Chest, Finished waist, Back Length) and use those numbers with any minor adjustments you want to make if there are any.



Casual Zip Vests

Size Range 32 - 60

Vest Specs

Unit: in

CHEST SIZE	32	33	34	35	36	37	38	39	40	41	42	43	44	45
Finished Chest	36	37	38	39	40	41	42	43	44	45	46	47	48	49
Back Length	24 7/8	25	25 1/8	25 1/4	25 3/8	25 1/2	25 5/8	25 3/4	25 7/8	26	26 1/8	26 1/4	26 3/8	26 1/2
Front Length from neck point	24	24 1/8	24 1/4	24 3/8	24 1/2	24 5/8	24 3/4	24 7/8	25	25 1/8	25 1/4	25 3/8	25 1/2	25 5/8
Point to Point	14 3/4	15	15 1/4	15 1/2	15 3/4	16	16 1/4	16 1/2	16 3/4	17	17 1/4	17 1/2	17 3/4	18
Finished Waist	35	36	37	38	39	40	41	42	43	44	45	46	47	48
Half Girth (5 inches below armhole)	17 1/2	18	18 1/2	19	19 1/2	20	20 1/2	21	21 1/2	22	22 1/2	23	23 1/2	24
Finished Bottom	35	36	37	38	39	40	41	42	43	44	45	46	47	48

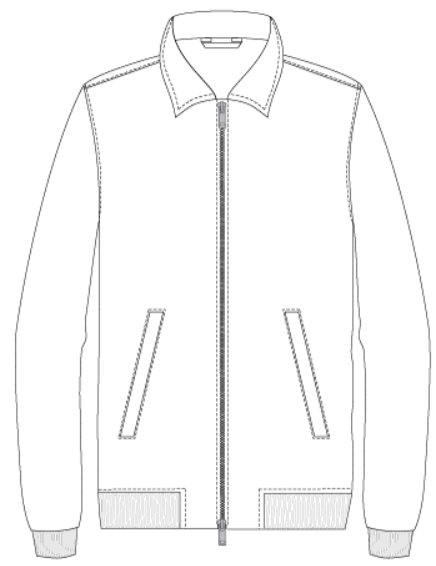
Back length limitations: Minus -2 inches from skin chest size and the associated back length and +5 inches from skin chest size chosen and associated back length.
Half Girth limitations: Minus -2 inches and plus +2 inches from base size chosen.
PTP limitations: Minus -1 inch and +1 inch from skin chest and associated PTP.

Unit: in

CHEST SIZE	46	47	48	49	50	51	52	53	54	55	56	57	58	59	60
Finished Chest	50	51	52	53	54	55	56	57	58	59	60	61	62	63	64
Back Length	26 5/8	26 3/4	26 7/8	27	27 1/8	27 1/4	27 3/8	27 1/2	27 5/8	27 3/4	27 7/8	28	28 1/8	28 1/4	28 3/8
Front Length from neck point	25 3/4	25 7/8	26	26 1/8	26 1/4	26 3/8	26 1/2	26 5/8	26 3/4	26 7/8	27	27 1/8	27 1/4	27 3/8	27 1/2
Point to Point	18 1/4	18 1/2	18 3/4	19	19 1/4	19 1/2	19 3/4	20	20 1/4	20 1/2	20 3/4	21	21 1/4	21 1/2	21 3/4
Finished Waist	49	50	51	52	53	54	55	56	57	58	59	60	61	62	63
Half Girth (5 inches below armhole)	24 1/2	25	25 1/2	26	26 1/2	27	27 1/2	28	28 1/2	29	29 1/2	30	30 1/2	31	31 1/2
Finished Bottom	49	50	51	52	53	54	55	56	57	58	59	60	61	62	63



Bomber Jacket



Bomber Jacket

Selling Tips

Visibility:

- Customers are more likely to be interested in the bomber jackets when they can see and touch them.

Action item: Having samples in your store or showroom is essential to drive sales. "when the client sees it, they get it."

Versatility:

- Customers see the bomber jackets, particularly the model with the knit neck collar, as an alternative or addition to their sport coats.
- This extends the customer's wardrobe options and increases the appeal of the bomber jacket.
- The bomber jacket offers a casual yet elegant look, which customers appreciate. It pairs well with jeans, making it a flexible clothing option.

Action item: Show this product to every client as most viewed it favorably just as a sport coat. The key is having the actual sample to show.

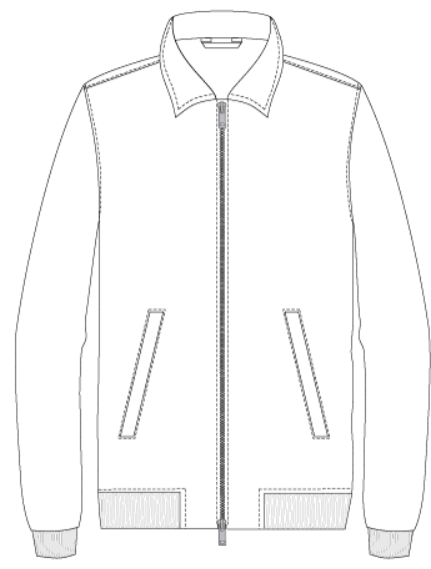
Outerwear Option:

- The bomber jacket model with the leaf collar is viewed more like an outerwear piece.
- Often purchased in solid colors, this jacket adds variety to a customer's outerwear collection.

Action item: Show both the Knit collar model and the Leaf collar model with the intention of selling both to the same client. One as a dressy/sporty sport coat and the other as a Casual Jacket(Outerwear).

Multiple Sales Opportunities:

- Both the knit collar and leaf collar models are seen as different categories (sport coats and outerwear) by customers.
- This perception creates opportunities to sell multiple units to the same client and increases potential for higher sales volumes.



Bomber Jacket

Fit Guide

Fitting the Bomber Jacket:

- **Chest Measurement:** Measure around the fullest part of your client's chest.
- **Coat Point to Point:** Measure from one side of the client's shoulder base, across the back under the collar, to the other shoulder base. This measurement should be slightly longer than for a sport coat as bomber jackets are worn oversized.
- **Sleeve Outseam:** Measure from the end of the point to point to the client's pinky knuckle. Subtract roughly half an inch to ensure the sleeve isn't too short.
- **Half Girth:** Measure the fullest part of the client's stomach, add 8-10 inches, then divide by two.
- **Coat Length:** Measure from the base of the neck down to somewhere between the pant waistband and the bottom of the client's seat.
- **Pant Skin Waist Measurement:** Take the same measurement as when measuring for a pair of pants. This is used to determine the bottom circumference of the bomber jacket.
- **Know Your Client and the Math:** Understand your client's preferences and how to adjust measurements accordingly. Some clients may prefer a shorter or longer bomber, so adjust measurements as needed.

Remember, each client is unique and might require adjustments to these steps.



Bomber Jacket

Quick Fit Tips - Converting Sport Coat

Based off existing sport coat measurements

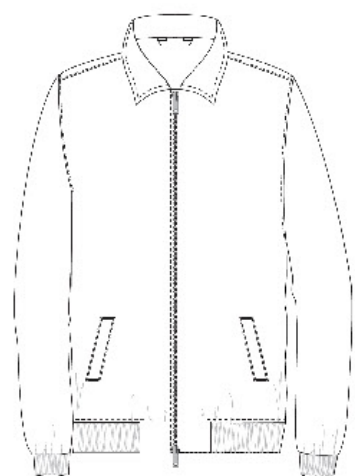
- Chest stays the same
- Increase PTP at least 1"
- Increase sleeve outseam at least 1"
- Half girth increase at least 1 3/4
- Shorten coat length 2 1/2-3 1/2
- Use pant skin waist +1 measurement

PRO FIT TIPS

#1 Select Leaf Collar and Regular Fit for an "outerwear coat fit"

#2 Select Knit Collar, Trim fit and reduce the sleeve circumference for a Chic Modern "sport coat fit".

#3 Select Pant waist based on how you want the bottom to fit.



Bomber Jacket

Casual Jacket Specs

Unit: in

CHEST SIZE	32	33	34	35	36	37	38	39	40	41	42	43	44	45
Finished Chest	38	39	40	41	42	43	44	45	46	47	48	49	50	51
Back Length	25 3/4	25 7/8	26	26 1/8	26 1/4	26 3/8	26 1/2	26 5/8	26 3/4	26 7/8	27	27 1/8	27 1/4	27 3/8
Front Length from neck point	26	26 1/8	26 1/4	26 3/8	26 1/2	26 5/8	26 3/4	26 7/8	27	27 1/8	27 1/4	27 3/8	27 1/2	27 5/8
Point to Point	17 3/4	18	18 1/4	18 1/2	18 3/4	19	19 1/4	19 1/2	19 3/4	20	20 1/4	20 1/2	20 3/4	21
Halfback	8 1/8	8 1/4	8 1/2	8 5/8	8 3/4	9	9 1/8	9 1/4	9 3/8	9 5/8	9 3/4	9 7/8	10 1/8	10 1/4
Bicep	16	16 1/4	16 1/2	16 3/4	17	17 1/4	17 1/2	17 3/4	18	18 1/4	18 1/2	18 3/4	19	19 1/4
Finished Waist	37 1/2	38 1/2	39 1/2	40 1/2	41 1/2	42 1/2	43 1/2	44 1/2	45 1/2	46 1/2	47 1/2	48 1/2	49 1/2	50 1/2
Half Girth (5 inches below armhole)	18 3/4	19 1/4	19 3/4	20 1/4	20 3/4	21 1/4	21 3/4	22 1/4	22 3/4	23 1/4	23 3/4	24 1/4	24 3/4	25 1/4
Sleeve Outseam (includes 2 1/8 in rib knit	25 7/8	25 7/8	26	26	26 1/8	26 1/8	26 1/4	26 1/4	26 3/8	26 3/8	26 1/2	26 5/8	26 5/8	26 3/4
Sleeve Inseam (includes 2 1/8 in rib knit)	20 3/8	20 3/8	20 1/4	20 1/4	20 1/8	20 1/8	20	20	19 7/8	19 7/8	19 3/4	19 5/8	19 5/8	19 1/2
Wrist relaxed (at seam of rib knit and	9 1/8	9 1/4	9 3/8	9 1/2	9 1/2	9 5/8	9 3/4	9 7/8	10	10 1/8	10 1/8	10 1/4	10 3/8	10 1/2
Pant Waist	28	29	30	31	32	33	34	35	36	37	38	39	40	41

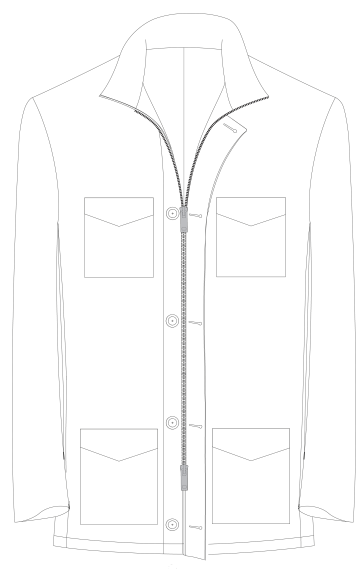
Back length limitations: -2 inches and +3 inches from chest size back length Sleeve Out seam Limitations: -5 inches, +3 inches from base size.
Maximum half girth alteration is -2 inches and +2 inches from base size
Point to Point limitations is -2 inch and +2 inch from base size

Unit: in

CHEST SIZE	46	47	48	49	50	51	52	53	54	55	56	57	58	59	60
Finished Chest	52	53	54	55	56	57	58	59	60	61	62	63	64	65	66
Back Length	27 1/2	27 5/8	27 3/4	27 7/8	28	28 1/8	28 1/4	28 3/8	28 1/2	28 5/8	28 3/4	28 7/8	29	29 1/8	29 1/4
Front Length from neck point	27 3/4	27 7/8	28	28 1/8	28 1/4	28 3/8	28 1/2	28 5/8	28 3/4	28 7/8	29	29 1/8	29 1/4	29 3/8	29 1/2
Point to Point	21 1/4	21 1/2	21 3/4	22	22 1/4	22 1/2	22 3/4	23	23 1/4	23 1/2	23 3/4	24	24 1/4	24 1/2	24 3/4
Halfback	10 3/8	10 1/2	10 3/4	10 7/8	11	11 1/4	11 3/8	11 1/2	11 5/8	11 7/8	12	12 1/8	12 1/4	12 1/2	12 5/8
Bicep	19 1/2	19 3/4	20	20 1/4	20 1/2	20 3/4	21	21 1/4	21 1/2	21 3/4	22	22 1/4	22 1/2	22 3/4	23
Finished Waist	51 1/2	52 1/2	53 1/2	54 1/2	55 1/2	56 1/2	57 1/2	58 1/2	59 1/2	60 1/2	61 1/2	62 1/2	63 1/3	64 1/2	65 1/2
Half Girth (5 inches below armhole)	25 3/4	26 1/4	26 3/4	27 1/4	27 3/4	28 1/4	28 3/4	29 1/4	29 3/4	30 1/4	30 3/4	31 1/4	31 3/4	32 1/4	32 3/4
Sleeve Outseam (includes 2 1/8 in rib	26 3/4	26 7/8	26 7/8	27	27	27 1/8	27 1/8	27 1/4	27 1/4	27 3/8	27 3/8	27 1/2	27 1/2	27 5/8	27 5/8
Sleeve Inseam (includes 2 1/8 in rib knit)	19 1/2	19 3/8	19 3/8	19 1/4	19 1/4	19 1/8	19 1/8	19	19	18 7/8	18 7/8	18 3/4	18 3/4	18 5/8	18 5/8
Wrist relaxed (at seam of rib knit and	10 5/8	10 5/8	10 3/4	10 7/8	11	11 1/8	11 1/4	11 1/4	11 3/8	11 1/2	11 5/8	11 3/4	11 7/8	11 7/8	12
Pant Waist	42	43	44	45	46	47	48	49	50	51	52	53	54	55	56



Five Button Zippered Field Jacket



Five Button Zippered Field Jacket

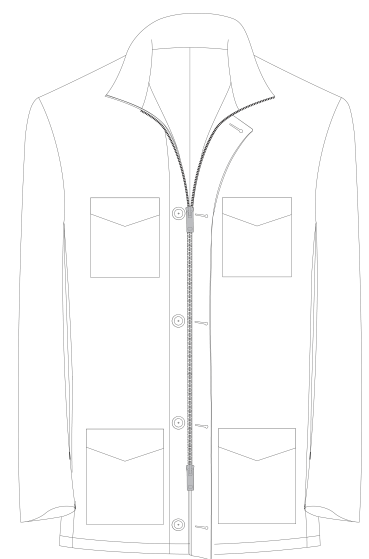
Styling Options

The "**Classic**" look sports patch pockets with pointed flaps with a hidden button to secure the contents of your pockets. In addition, short side vents give more of a sartorial flair.

Classic



Pointed Patch Pockets
W/ Hidden Button

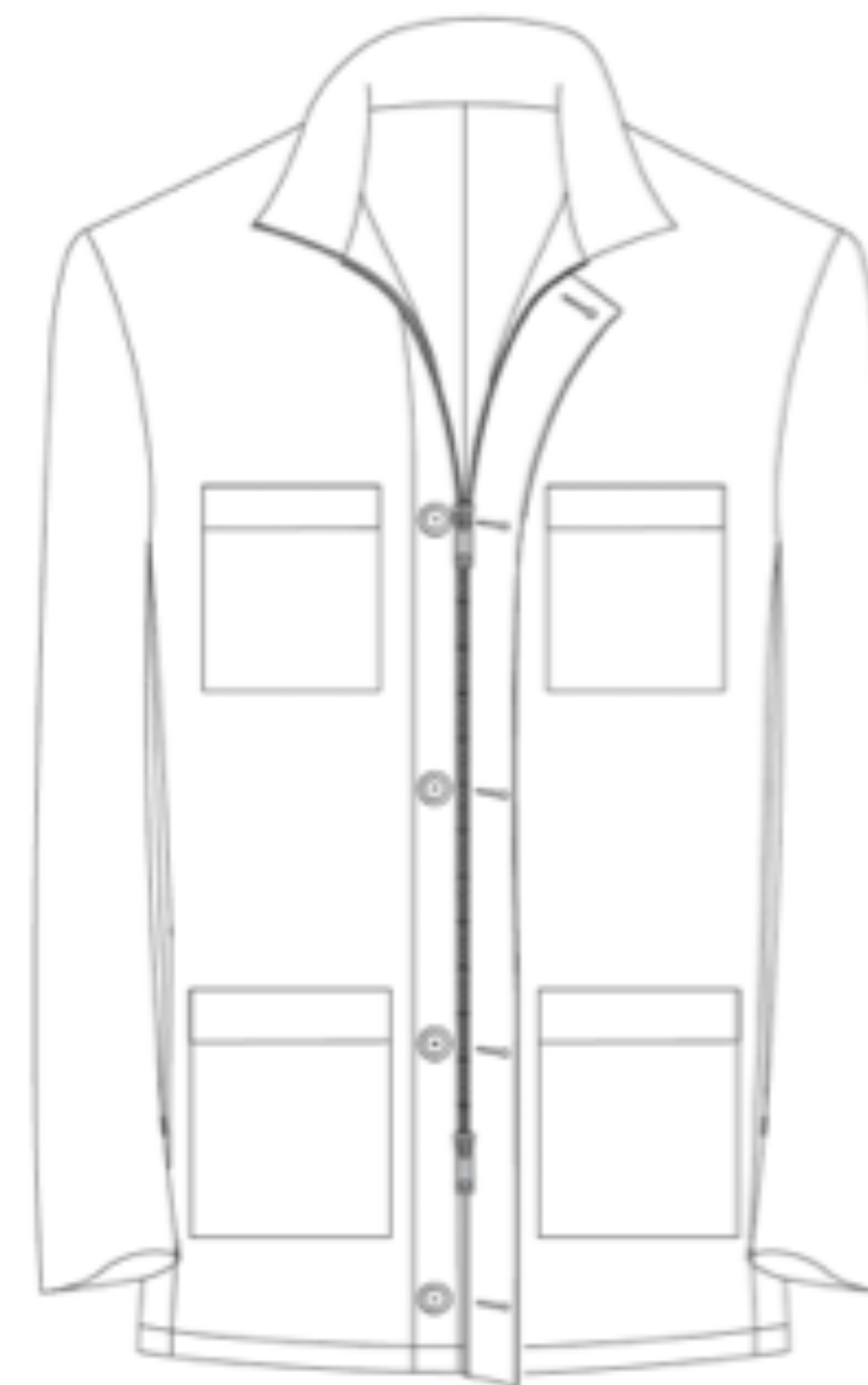


Five Button Zippered Field Jacket

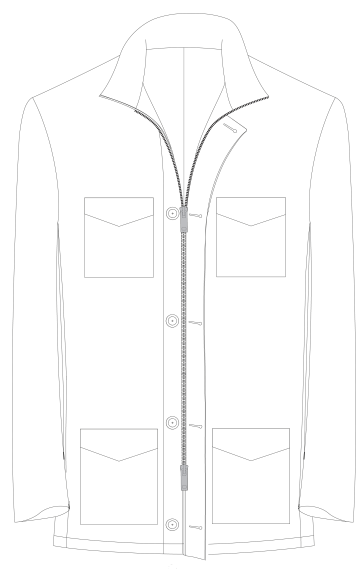
Styling Options

The "**Urban**" look sports patch pockets with rectangular flaps with a hidden button to secure the contents of your pockets. As the "classic", side vents give a contemporary feel to this configuration. This is a great jacket to navigate the side streets of major cities.

Urban



Square Patch Flap Pockets
W/ Hidden Button



Five Button Zippered Field Jacket

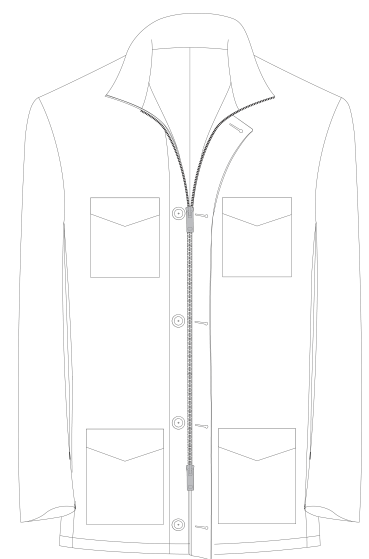
Styling Options

The "**Military**" look sports patch pockets with inverted pleats with a button through the flap to resonate a military feel. Moreover, pointed shoulder epaulets, sleeve tabs, and no vents are options that are highly recommended to be consistent with a military look. Pick the right fabric and someone might salute you or ask for directions to the nearest base.

Military



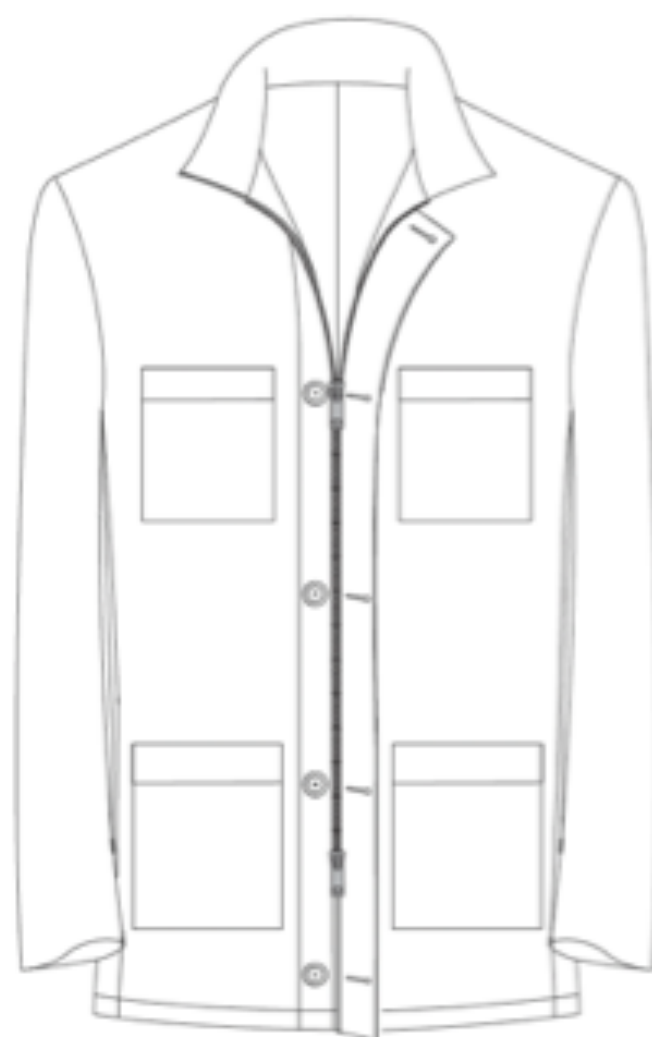
Pointed Epaulette Shoulder & Sleeve
Inverted Point Patch Pocket W/ Button



Five Button Zippered Field Jacket

Styling Options

Urban



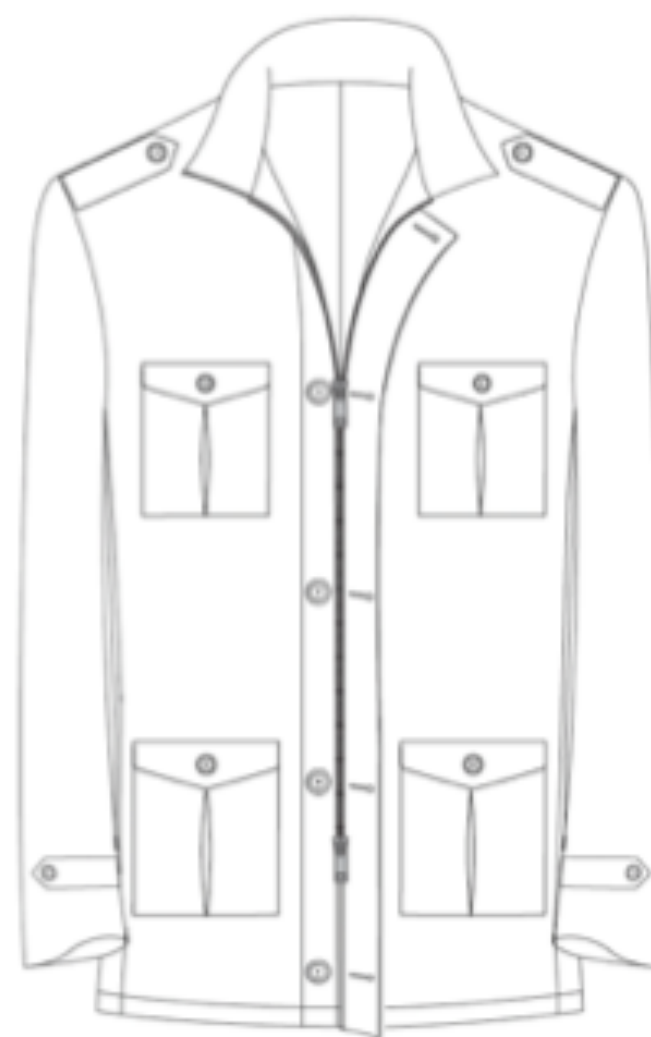
Square Patch Flap Pockets
W/ Hidden Button

Classic



Pointed Patch Pockets
W/ Hidden Button

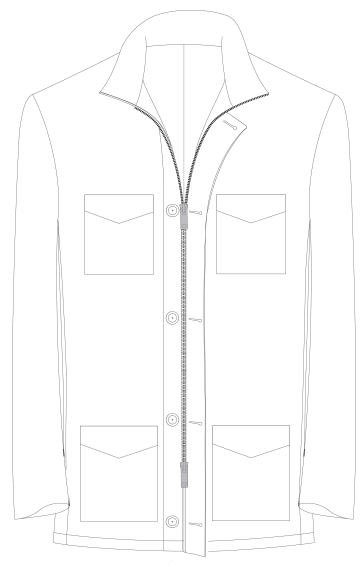
Military



Pointed Epaulette Shoulder & Sleeve
Inverted Point Patch Pocket W/ Button

All configurations feature:

- Hidden side entry pocket behind all the lower patch pockets
- Optional elbow patches
- Optional vent option (vented or no vent)
- Optional sleeve tabs
- Optional epaulets
- Hidden button front placket
- Inside chest pocket configurations of besom, pointed, and rectangular flaps
- Inside lower pocket configurations of besom, pointed and rectangular flaps, and patch



Five Button Zippered Field Jacket

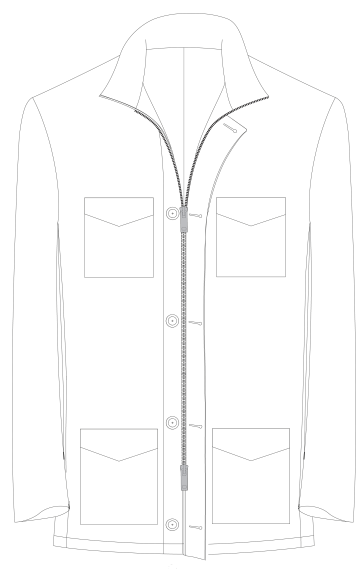
Fit Guide

A couple of things to consider to ensure a good fit:

- Field Jackets are +6 1/2" over the chest. This is built into the pattern at the factory level.
- Field Jackets are patterned to be worn over a shirt/sweater/vest but can be worn over a suit/ sport coat with simple adjustments. Pattern: Half Girth + 1/2", Point to Point + 1/2", Sleeves + 1/2" (built into the pattern at the factory level)
- We recommend using the same coat length for the Field Jacket that you use for the client's sport coat length. Or maybe 1" shorter or longer depending on the client's preferences.

Quick Fit Tips - Converting Sport Coat

- The built-in Field Jacket allowances are the same as the car coat. Here are some resources to view when making the Five Button Zippered Field Jacket

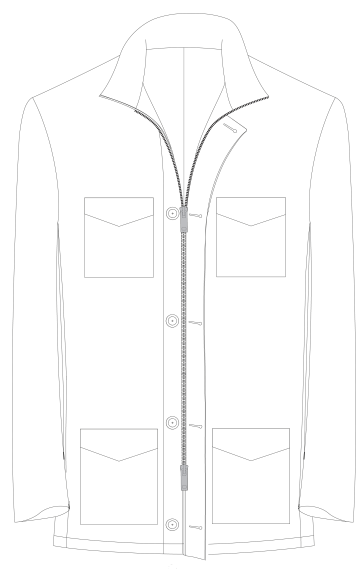


Five Button Zippered Field Jacket

Options - Insulation Padding

The Field Jacket does have the option to be made with insulation padding.

- When selecting this option, we do recommend going up one full size (example: 41 vs 40).
- Consider adding a little (1/4) to all the main fit points: PTP, Half Girth, and Sleeve. The reason for this increased fit recommendation is that the insulation padding takes up extra room within the coat's torso and sleeves. The coat becomes, slightly puffy.



Five Button Zippered Field Jacket

Quick Fit Tips - Converting Sport Coat

To convert coat measurements

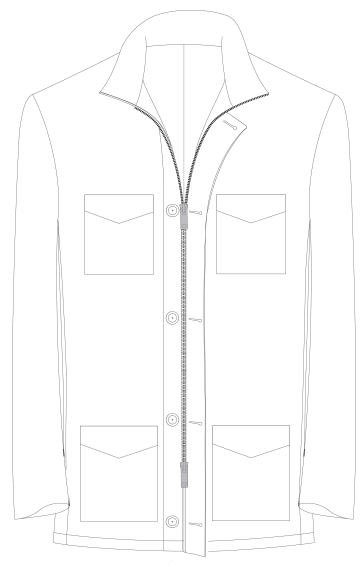
- Input a coat length to the sport coat measurements.
 - The recommended coat length for this model is close to the client's current sport coat length, perhaps an inch longer.
 - This garment is meant to be worn like a sport coat, so avoid going too long or oversizing.
- The system will automatically add 1/2 " (at the pattern level)
 - point to point
 - half girth
 - sleeve

Pro Fit Tip

Ensure the sport coat fits properly, especially in the half girth area, as it is used as a reference for the new coat.

- If the sport coat is too tight, especially in the half girth, it may cause issues when converting measurements for the new coat.
- Increase the Half Girth + 1" if working from a sport coat measurement that fits close

A tight sport coat half girth will yield a tight Field Coat half girth; be careful here!

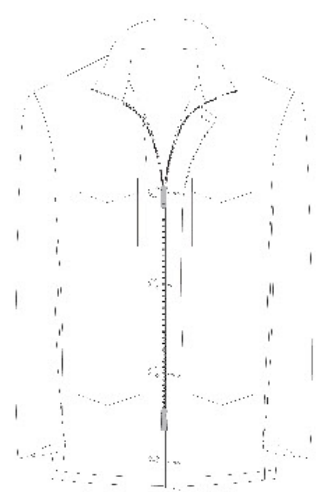


Five Button Zippered Field Jacket

Quick Fit Tips - Without Sport Coat Measurements

No existing measurements on file - take normal sport coat measurements

- If there's no sport coat to reference, take all the measurements normally needed for a sport coat and add the desired coat length.
- For something to be worn over a suit or sport coat, consider other outerwear models in the lineup.
- This new model is intended to be worn like a sport coat.



Five Button Zippered Field Jacket

Standard Block

Sizes 32-60 only

- Restrictions:**
- * Limits on shortening is -2 inches from base size
 - * Limits on lengthening is +3 inches from base size
 - * Half girth limits are +3, -3 inches from base size

Field Coat Specs

CHEST SIZE	32	33	34	35	36	37	38	39	40	41	42	43	44
Finished Chest	38 1/2	39 1/2	40 1/2	41 1/2	42 1/2	43 1/2	44 1/2	45 1/2	46 1/2	47 1/2	48 1/2	49 1/2	50 1/2
Point to Point	16 5/8	17	17 1/4	17 5/8	17 7/8	18 1/4	18 1/2	18 7/8	19 1/8	19 1/2	19 3/4	20 1/8	20 3/8
Half Back	7 3/4	8	8 1/8	8 1/4	8 1/2	8 5/8	8 3/4	9	9 1/8	9 3/8	9 1/2	9 5/8	9 7/8
Half Girth	18 1/2	19	19 1/2	20	20 1/2	21	21 1/2	22	22 1/2	23	23 1/2	24	24 1/2
Back Length	29	29 1/8	29 1/4	29 3/8	29 1/2	29 5/8	29 3/4	29 7/8	30	30 1/8	30 1/4	30 3/8	30 1/2
InSleeve	17 5/8	17 5/8	17 5/8	17 5/8	17 5/8	17 5/8	17 5/8	17 5/8	17 5/8	17 5/8	17 5/8	17 5/8	17 5/8
OutSleeve	24 1/8	24 1/4	24 1/4	24 3/8	23 5/8	24 1/2	24 5/8	24 5/8	24 3/4	24 3/4	24 7/8	25	25
Bicep Circumference	14 5/8	14 7/8	15	15 1/4	15 1/2	15 5/8	15 7/8	16 1/8	16 3/8	16 1/2	16 3/4	17	17 1/8
Sleeve End Circumference	10 7/8	11	11 1/8	11 1/4	11 3/8	11 1/2	11 5/8	11 3/4	11 7/8	12	12 1/8	12 1/4	12 3/8

The point to point and sleeve lengths have an automatic addition of half an inch to the corresponding jacket measurements, while the half girth has an automatic addition of one inch

Selecting Trim Fit in a customer’s Body Description profile will decrease the finished chest, bicep, and sleeve end by one size

Selecting Easy Fit in a customer’s Body Description profile will Increase the finished chest, bicep, and sleeve end by one size

Measurements provided are only accurate prior to any alterations being applied to the garment

For PADDING OPTION recommendation is to go up one size. (ex: without padding 40 with padding order 41)

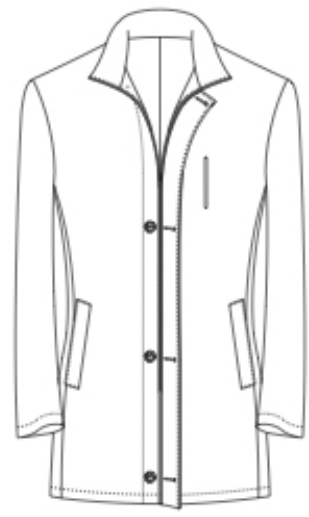
CHEST SIZE	45	46	47	48	49	50	51	52	53	54	55	56	57	58	59	60
Finished Chest	51 1/2	52 1/2	53 1/2	54 1/2	55 1/2	56 1/2	57 1/2	58 1/2	59 1/2	60 1/2	61 1/2	62 1/2	63 1/2	64 1/2	65 1/2	66 1/2
Point to Point	20 3/4	21 1/8	21 3/8	21 3/4	22	22 3/8	22 5/8	23	23 1/4	23 5/8	23 7/8	24 1/4	24 1/2	24 7/8	25 1/8	25 1/2
Half Back	10	10 1/4	10 3/8	10 1/2	10 3/4	10 7/8	11 1/8	11 1/4	11 3/8	11 5/8	11 3/4	11 7/8	12 1/4	12 1/4	12 1/2	12 5/8
Half Girth	25	25 1/2	26	26 1/2	27	27 1/2	28	28 1/2	29	29 1/2	30	30 1/2	31	31 1/2	32	32 1/2
Back Length	30 5/8	30 3/4	30 7/8	31	31 1/8	31 1/4	31 3/8	31 1/2	31 5/8	31 3/4	31 7/8	32	32 1/8	32 1/4	32 3/8	32 1/2
InSleeve	17 5/8	17 5/8	17 5/8	17 5/8	17 5/8	17 5/8	17 5/8	17 5/8	17 5/8	17 5/8	17 5/8	17 5/8	17 5/8	17 5/8	17 5/8	17 5/8
OutSleeve	25 1/8	25 1/8	25 1/4	25 1/4	25 3/8	25 1/2	25 1/2	25 5/8	25 5/8	25 3/4	25 7/8	25 7/8	26	26	26 1/8	26 1/8
Bicep Circumference	17 3/8	17 5/8	17 3/4	18	18 1/4	18 1/2	18 5/8	18 7/8	19 1/8	19 1/4	19 1/2	19 3/4	19 7/8	20 1/8	20 3/8	20 5/8
Sleeve End Circumference	12 1/2	12 5/8	12 3/4	12 7/8	13	13 1/8	13 1/4	13 3/8	13 1/2	13 5/8	13 3/4	13 7/8	14	14 1/8	14 1/4	14 3/8



Four Button Zippered Car Coat

aka

Car4Z // Convenience Coat // Hybrid Coat



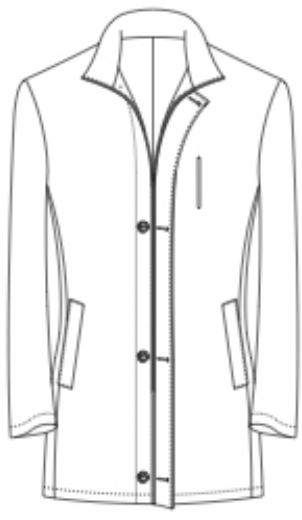
Four Button Zippered Car Coat

Fit Guide

- Car Coats are +6 1/2" over chest. This is built into pattern at the factory level.
- Car Coat models are patterned to be worn over a shirt/sweater/vest but can be worn over a suit/ sport coat with simple adjustments. Pattern: Half Girth + 1/2", Point to Point + 1/2", Sleeves + 1/2" (built into the pattern at the factory level)
- Use clients standard coat measurements and add above the knee car coat length. We recommend selecting Regular Fit.
- If your customer primarily will be wearing over a suit / sport coat make adjustments to your clients standard measurements using the following chart as a fitting guideline.

Applies to ALL Car Coat Models:

- Three Button Car Coat, Five Button Car Coat, Four Button Zippered Car Coat, Double Breasted 6X3 Car Coat



Car Coats

Quick Fit Tips

How will it be worn?

Car Coat over Shirt / Sweater / Vest

Dealer Adjustments to Measurements:

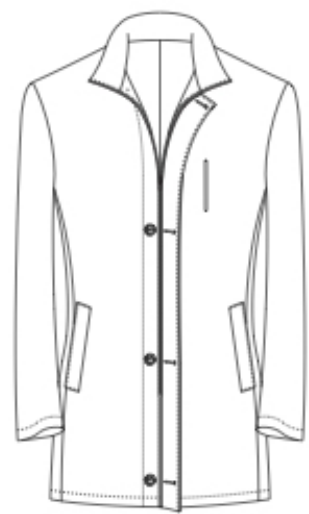
- For length, the recommended range is +2" to +6" over CSC measurements.
- No other adjustments needed.

Car Coat over Suit or Sport Coat

Dealer Adjustments to Measurements:

- PTP Add 1/2"
- HG Add 1/2"
- Sleeves Add 1/2"
- Chest Add 1" to 2"
- Coat Seat Add 1" to 2" (do same as chest adjustment)
- For length, the recommended range is +2" to +6" over CSC measurements.

Know your customer and make adjustments based off their personal fit preferences.



Four Button Zippered Car Coat

Fit Guide

How to fit an outerwear garment over the customer's suit/coat pattern.

SAMPLE: Car Coat Model: 4 Button Zippered Car Coat

- Customer's jacket measurements (suit coat) if in system will show on order
- Body Description: Recommend using REGULAR fit, height, shoulder readings, posture
- Coat Measurements:
 - Point to Point 19 (factory will cut $+1/2$ over = $19 \frac{1}{2}$) ADD additional $+1/2$ inch to get to 20
 - Half Girth 22 (factory will cut $+1/2$ over = $22 \frac{1}{2}$) ADD additional $+1/2$ to get to 23
 - Sleeve Outseams $24 \frac{1}{2}$ (factory will cut $+ \frac{1}{2}$ over = 25) ADD additional $+1/2$ to get to $25 \frac{1}{2}$
 - Coat Length 30 (you must choose finished length) ADD + 2 to +6 inch
 - Chest pattern 42 (pattern will add +6.5 on chest) ADD +1 to +2 inch to accommodate fit
 - Coat Seat 42 Recommend adding +1 to +2 inch to accommodate fit



Four Button Zippered Car Coat

Standard Block

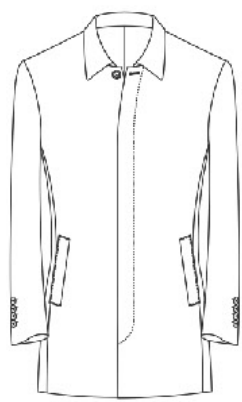
Car Coat Specs

Unit: in													
CHEST SIZE	32	33	34	35	36	37	38	39	40	41	42	43	44
Finished Chest	38 1/2	39 1/2	40 1/2	41 1/2	42 1/2	43 1/2	44 1/2	45 1/2	46 1/2	47 1/2	48 1/2	49 1/2	50 1/2
Point to Point	16 5/8	17	17 1/4	17 5/8	17 7/8	18 1/4	18 1/2	18 7/8	19 1/8	19 1/2	19 3/4	20 1/8	20 3/8
Half Back	7 3/4	8	8 1/8	8 1/4	8 1/2	8 5/8	8 3/4	9	9 1/8	9 3/8	9 1/2	9 5/8	9 7/8
Half Girth	18 1/2	19	19 1/2	20	20 1/2	21	21 1/2	22	22 1/2	23	23 1/2	24	24 1/2
Back Length	30 7/8	31	31 1/8	31 1/8	31 1/4	31 3/8	31 1/2	31 5/8	31 3/4	31 7/8	32	32 1/8	32 1/4
InSleeve	17 5/8	17 5/8	17 5/8	17 5/8	17 5/8	17 5/8	17 5/8	17 5/8	17 5/8	17 5/8	17 5/8	17 5/8	17 5/8
OutSleeve	24 1/8	24 1/4	24 1/4	24 3/8	23 5/8	24 1/2	24 5/8	24 5/8	24 3/4	24 3/4	24 7/8	25	25
Bicep Circumference	14 5/8	14 7/8	15	15 1/4	15 1/2	15 5/8	15 7/8	16 1/8	16 3/8	16 1/2	16 3/4	17	17 1/8
Sleeve End Circumference	10 7/8	11	11 1/8	11 1/4	11 3/8	11 1/2	11 5/8	11 3/4	11 7/8	12	12 1/8	12 1/4	12 3/8

The point to point and sleeve lengths have an automatic addition of half an inch to the corresponding jacket measurements, while the half girth has an automatic addition of one inch
Selecting Trim Fit in a customer's Body Description profile will decrease the finished chest, bicep, and sleeve end by one size
Selecting Easy Fit in a customer's Body Description profile will Increase the finished chest, bicep, and sleeve end by one size
Measurements provided are only accurate prior to any alterations being applied to the garment

For PADDING OPTION recommendation is to go up one size. (ex: without padding 40 with padding order 41)

CHEST SIZE	45	46	47	48	49	50	51	52	53	54	55	56	57
Finished Chest	51 1/2	52 1/2	53 1/2	54 1/2	55 1/2	56 1/2	57 1/2	58 1/2	59 1/2	60 1/2	61 1/2	62 1/2	63 1/2
Point to Point	20 3/4	21 1/8	21 3/8	21 3/4	22	22 3/8	22 5/8	23	23 1/4	23 5/8	23 7/8	24 1/4	24 1/2
Half Back	10	10 1/4	10 3/8	10 1/2	10 3/4	10 7/8	11 1/8	11 1/4	11 3/8	11 5/8	11 3/4	11 7/8	12 1/8
Half Girth	25	25 1/2	26	26 1/2	27	27 1/2	28	28 1/2	29	29 1/2	30	30 1/2	31
Back Length	32 3/8	32 1/2	32 5/8	32 3/4	32 7/8	33	33 1/8	33 1/4	33 1/4	33 3/8	33 1/2	33 5/8	33 3/4
InSleeve	17 5/8	17 5/8	17 5/8	17 5/8	17 5/8	17 5/8	17 5/8	17 5/8	17 5/8	17 5/8	17 5/8	17 5/8	17 5/8
OutSleeve	25 1/8	25 1/8	25 1/4	25 1/4	25 3/8	25 1/2	25 1/2	25 5/8	25 5/8	25 3/4	25 7/8	25 7/8	26
Bicep Circumference	17 3/8	17 5/8	17 3/4	18	18 1/4	18 1/2	18 5/8	18 7/8	19 1/8	19 1/4	19 1/2	19 3/4	19 7/8
Sleeve End Circumference	12 1/2	12 5/8	12 3/4	12 7/8	13	13 1/8	13 1/4	13 3/8	13 1/2	13 5/8	13 3/4	13 7/8	14



Three and Five Button Car Coats

Standard Block

Car Coat Specs

Unit: in

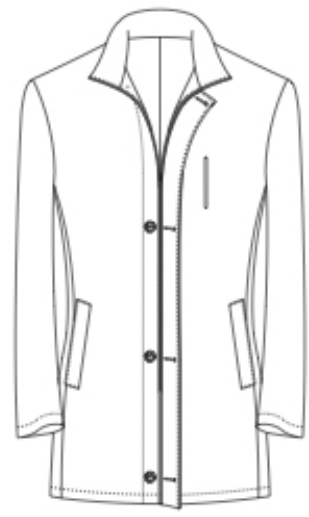
CHEST SIZE	32	33	34	35	36	37	38	39	40	41	42	43	44
Finished Chest	38 1/2	39 1/2	40 1/2	41 1/2	42 1/2	43 1/2	44 1/2	45 1/2	46 1/2	47 1/2	48 1/2	49 1/2	50 1/2
Point to Point	17 1/2	17 7/8	18	18 1/4	18 1/2	18 3/4	19	19 1/4	19 1/2	19 3/4	20	20 1/4	20 1/2
Half Back	8 1/8	8 1/4	8 3/8	8 1/2	8 5/8	8 3/4	8 7/8	9	9 1/8	9 1/4	9 3/8	9 1/2	9 5/8
Half Girth	18	18 1/2	19	19 1/2	20	20 1/2	21	21 1/2	22	22 1/2	23	23 1/2	24
Back Length	34 3/4	34 7/8	35	35 1/8	35 1/4	35 3/8	35 1/2	35 5/8	35 3/4	35 7/8	36	36 1/8	36 1/8
InSleeve	17 3/8	17 3/8	17 3/8	17 3/8	17 3/8	17 3/8	17 3/8	17 3/8	17 3/8	17 3/8	17 3/8	17 3/8	17 3/8
OutSleeve	23 7/8	24	24 1/8	24 1/4	24 3/8	24 3/8	24 1/2	24 5/8	24 3/4	24 3/4	24 7/8	25	25 1/8
Bicep Circumference	15 1/2	15 3/4	16	16 1/8	16 3/8	16 1/2	16 3/4	16 7/8	17 1/8	17 3/8	17 1/2	17 3/4	17 7/8
Sleeve End Circumference	10 7/8	11	11 1/8	11 1/4	11 3/8	11 1/2	11 5/8	11 6/8	11 7/8	12	12 1/8	12 1/4	12 3/8
Shoulder to Top Button (Three Button)	12	12 1/8	12 3/8	12 1/2	12 3/4	12 7/8	13	13 1/4	13 1/2	13 1/2	13 3/4	14	14 1/8

The point to point and sleeve lengths have an automatic addition of half an inch to the corresponding jacket measurements, while the half girth has an automatic addition of one inch
Selecting Trim Fit in a customer's Body Description profile will decrease the finished chest, bicep, and sleeve end by one size
Selecting Easy Fit in a customer's Body Description profile will Increase the finished chest, bicep, and sleeve end by one size
Measurements provided are only accurate prior to any alterations being applied to the garment

CHEST SIZE	45	46	47	48	49	50	51	52	53	54	55	56	57
Finished Chest	51 1/2	52 1/2	53 1/2	54 1/2	55 1/2	56 1/2	57 1/2	58 1/2	59 1/2	60 1/2	61 1/2	62 1/2	63 1/2
Point to Point	20 3/4	21	21 1/4	21 1/2	21 3/4	22	22 1/4	22 1/2	22 3/4	23	23 1/4	23 1/2	23 3/4
Half Back	9 3/4	9 7/8	10	10 1/8	10 1/4	10 3/8	10 1/2	10 5/8	10 3/4	11	11 1/8	11 1/4	11 3/8
Half Girth	24 1/2	25	25 1/2	26	26 1/2	27	27 1/2	28	28 1/2	29	29 1/2	30	30 1/2
Back Length	36 1/4	36 3/8	36 1/2	36 5/8	36 3/4	36 7/8	37	37 1/8	37 1/4	37 3/8	37 1/2	37 5/8	37 3/4
InSleeve	17 3/8	17 3/8	17 3/8	17 3/8	17 3/8	17 3/8	17 3/8	17 3/8	17 3/8	17 3/8	17 3/8	17 3/8	17 3/8
OutSleeve	25 1/8	25 1/4	25 3/8	25 1/2	25 1/2	25 5/8	25 3/4	25 7/8	25 7/8	26	26 1/8	26 1/4	26 3/8
Bicep Circumference	18 1/8	18 1/4	18 1/2	18 3/4	18 7/8	19 1/8	19 1/4	19 1/2	19 5/8	19 7/8	20 1/8	20 1/4	20 1/2
Sleeve End Circumference	12 1/2	12 5/8	12 3/4	12 7/8	13	13 1/8	13 1/4	13 3/8	13 1/2	13 5/8	13 3/4	13 7/8	14
Shoulder to Top Button (Three Button)	14 1/2	14 1/2	14 3/4	14 7/8	15 1/8	15 1/2	15 1/2	15 3/4	15 7/8	16 1/8	16 1/2	16 1/2	16 3/4



Topcoat



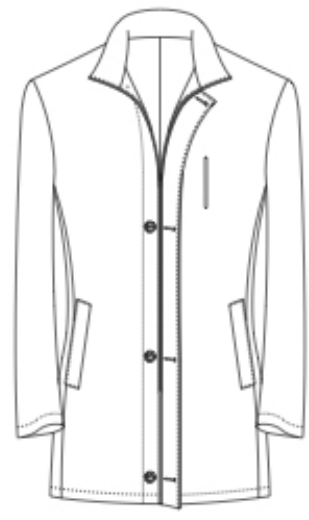
Four Button Zippered Car Coat

Fit Guide

- Topcoats are +7” over chest. This is built into pattern at the factory level.
- Topcoat models are patterned to be worn over a suit/sport coat and hit below the knee. Topcoat Pattern: Half Girth +1”, Point to Point +1”, Sleeves +1” (built into the pattern at the factory level)
- Use clients standard coat measurements and add below the knee topcoat length. When you initiate a CTOPC order the standard coat measurements on the client profile will carry over to the order.
- Topcoat models with a length that hits above the knee are not recommended. If your customer wants an above the knee coat, please choose a car coat model.

Applies to ALL Topcoat Models:

- Three Button Topcoat, Five Button Topcoat, Double Breasted 6X2 Topcoat



Four Button Zippered Car Coat

Fit Guide

How to fit an outerwear garment over the customer's suit/coat pattern.

SAMPLE:

- Topcoat Model: 3 Button Topcoat
- Customer's jacket measurements (suit coat) if in system will show on order
- Body Description: Recommend using REGULAR fit, height, shoulder readings, posture
- Coat Measurements:
 - Point to Point 19 (factory will cut +1 inch over = 20)
 - Half Girth 22 (factory will cut + 1 inch over = 23)
 - Sleeve Outseams 24 ½ (factory will cut + 1 inch over = 25 ½)
 - Coat Length 30 (you must choose finished length below knee)
 - Chest pattern 42 (pattern will add +7 on chest fit to accommodate fit)



THANK YOU!

Questions. Suggestions. Comments.

Contact Us -

Dana • ddean@trinity-apparel.com

Lauren • ldale@trinity-apparel.com