

iDesign

SHIRTS | STYLE BOOK



COMPANY 3

SHIRTS 5

| | |
|------------------------|----|
| EXTERIOR OPTIONS..... | 5 |
| COLLAR OPTIONS..... | 5 |
| CUFF OPTIONS..... | 10 |
| POCKETS OPTIONS..... | 18 |
| BUTTON OPTIONS..... | 22 |
| FRONT OPTIONS..... | 23 |
| BACK OPTIONS..... | 25 |
| SHOULDER OPTIONS..... | 26 |
| TAIL OPTIONS..... | 27 |
| STITCHING OPTIONS..... | 28 |
| FABRIC OPTIONS..... | 32 |
| TRIM OPTIONS..... | 33 |
| MONOGRAM OPTIONS..... | 34 |



General Company Information

Trinity Apparel Group
193 Business Park Drive, Suite C
Ridgeland, MS 39157

Monday – Friday
9:00am – 5:00pm
Central Standard Time

601.713.2628 | Fax: 601.977.8410 | www.trinity-apparel.com | info@trinity-apparel.com

Trinity Staff Contact Information

| | | |
|--------------|--|--|
| Craig Zahner | | czahner@trinity-apparel.com |
| Greg Traweek | | gtraweek@trinity-apparel.com |

Trinity Market Consultants Information

Trinity Market Consultants are leading independent Trinity dealers. Their roles as TMC's are to support Trinity dealers regarding client cross over, measurements, fit, styling and order entry. In addition they are excellent contacts for your ideas and constructive comments to help Trinity perfect our model.

| | | |
|----------------------------|--|--|
| Jeff Murphy | | jmurphy@trinity-apparel.com |
| Mike Langmack | | mlangmack@trinity-apparel.com |
| David Eubanks | | deubanks@trinity-apparel.com |
| Chris Cartisano | | ccartisano@trinity-apparel.com |
| (UK Sales) Simon Parton | | sparton@trinity-apparel.com |
| (Retail / B&M) Mark Thiele | | mthiele@idesign-apparel.com |



Quality

The Trinity Custom Shirt Program has been developed with a core standard of QUALITY that exceeds what is expected in the USA from domestic manufacturers.

- State of the Art Technology
- 18-20 Stitches per Inch
- Four-Step Pressing Process
- Single- Needle Tailoring
- Imported Threads and Trimmings
- Four Layers of Quality Control

Order Submission

All orders are submitted through the Trinity on-line order interface via an assigned dealer account. No orders are accepted via e-mail or fax without exception. The on-line order interface is a powerful tool that has been designed to streamline the custom clothing ordering process. As a result, handwritten translation errors are eliminated and your client's details are captured for future repeat orders. All orders require a 50% deposit paid at the time of order submission through your Trinity Apparel Group on-line dealer account. Balances are charged in full upon shipment from the Trinity Distribution Center.

Minimums, Upcharges and Oversize

Trinity does not have a minimum shirt quantity requirement and there are no up-charges for special details such as monogramming, split-yoke, white collar/cuffs or a laundry marker. Finally, Trinity does not have oversize charges for chest, tail length or sleeve length.

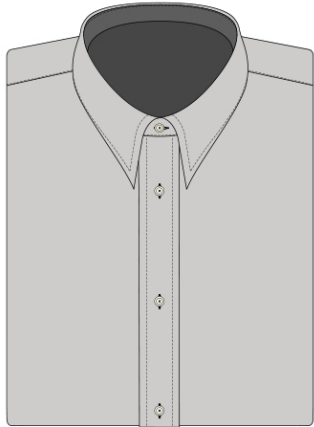
Lead Times

Trinity Custom Shirts will be delivered consistently within 25 days or fewer. Please note that confusing special instructions, measurement/detail mistakes or changes after the order has been submitted will cause delays. Trinity will not honor order change requests after cutting. **PLEASE, REVIEW ALL ORDERS CAREFULLY PRIOR TO SUBMISSION!**

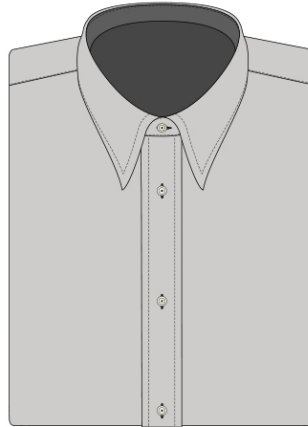
Repairs and Alterations

Please make sure that all shirts returned to Trinity are clean and include a completed return form. It is strongly advised that dealers contact Trinity to discuss returns or alterations prior to sending to Trinity. Shipping costs back to Trinity are the responsibility of the dealer.

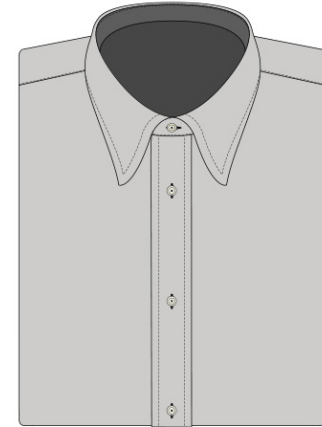
EXTERIOR OPTIONS COLLAR OPTIONS | COLLARS



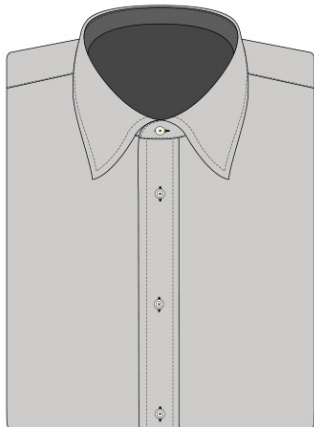
XNP
EXTRA NARROW POINT
3" POINT ≈ 2" SPREAD*



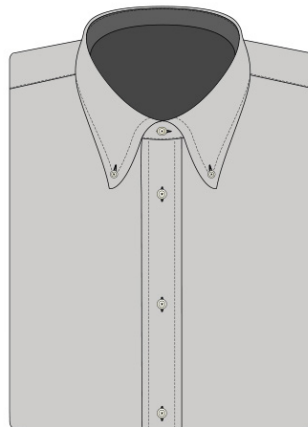
NP-1
NARROW POINT
3" POINT ≈ 2 1/2" SPREAD*



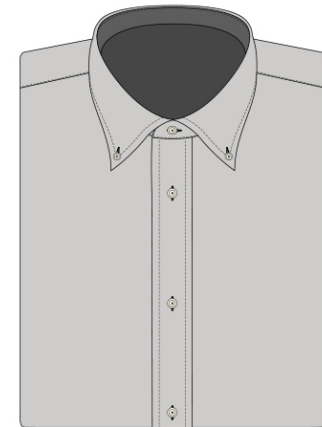
CP-1
CLASSIC POINT
3" POINT ≈ 3" SPREAD*



MP-1
MADISON POINT
3" POINT ≈ 3 1/2" SPREAD*

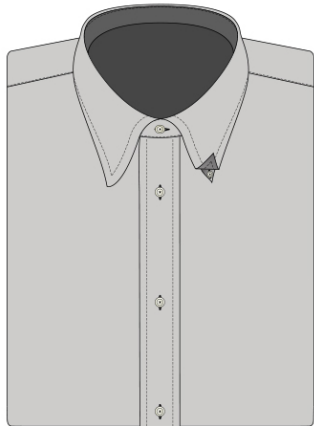


BD-1
BUTTON DOWN (CLASSIC)
3" POINT ≈ 3" SPREAD*

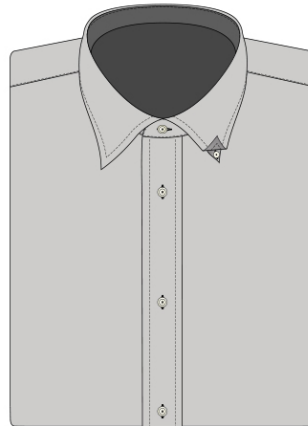


BD-2
BUTTON DOWN (MADISON)
3" POINT ≈ 3 1/2" SPREAD*

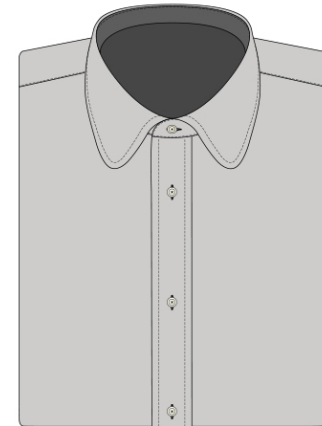
EXTERIOR OPTIONS COLLAR OPTIONS | COLLARS



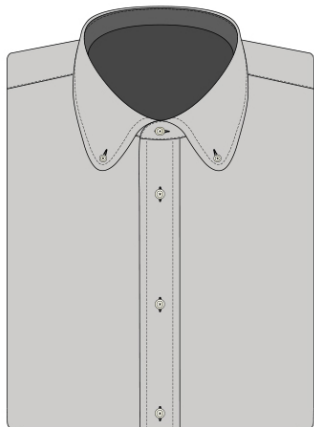
HB-1
HIDDEN BUTTON DOWN (CLASSIC)
3" POINT ≈ 3" SPREAD*



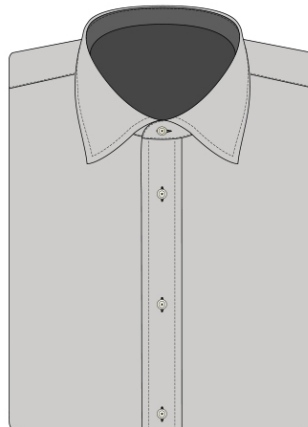
HB-2
HIDDEN BUTTON DOWN (MADISON)
3" POINT ≈ 3 1/2" SPREAD*



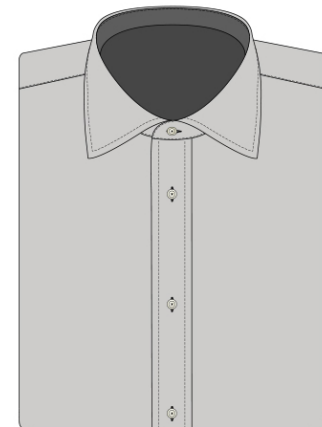
RP-1
ROUND POINT (MADISON)
3" POINT ≈ 3 1/2" SPREAD*



RB-1
ROUND BUTTON DOWN (MADISON)
3" POINT ≈ 3 1/2" SPREAD*

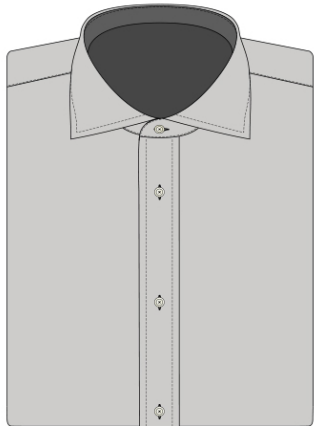


WS-1
WINDSOR SPREAD
3" POINT ≈ 4" SPREAD*

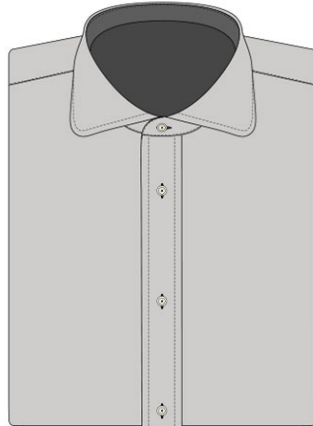


AS-1
AMERICAN SPREAD
3" POINT ≈ 4 1/2" SPREAD*

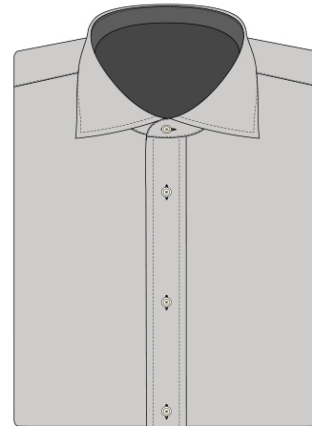
EXTERIOR OPTIONS COLLAR OPTIONS | **COLLARS**



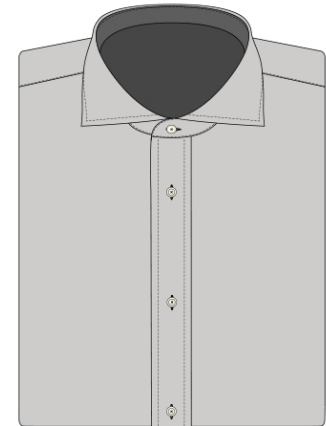
BS-1
BRITISH SPREAD
3" POINT ≈ 5" SPREAD*



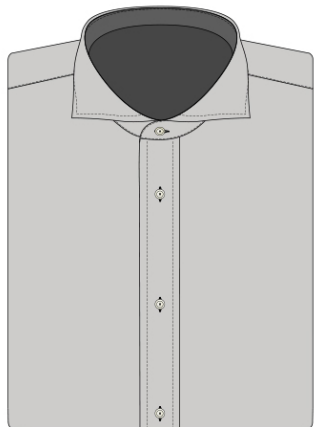
BRP
BRITISH ROUND POINT MADISON



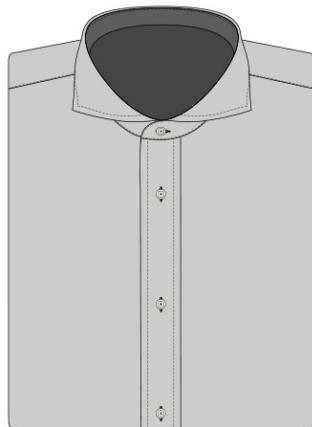
IS-1
ITALIAN SPREAD
3" POINT ≈ 5 1/4" SPREAD*



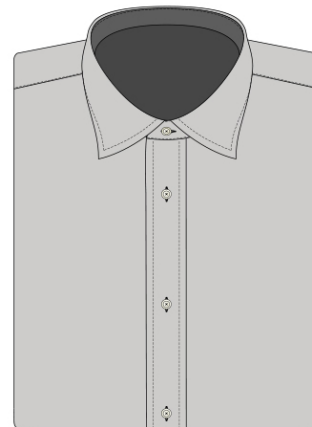
FS-1
FASHION SPREAD
3" POINT ≈ 6" SPREAD*



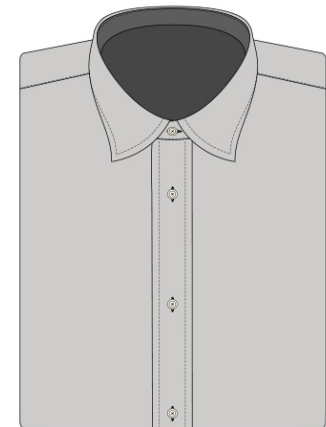
FS-2
FASHION SPREAD 2
3" POINT ≈ 6 1/2" SPREAD*



EC
EXTREME CUTAWAY



CS-1
CURVE SPREAD

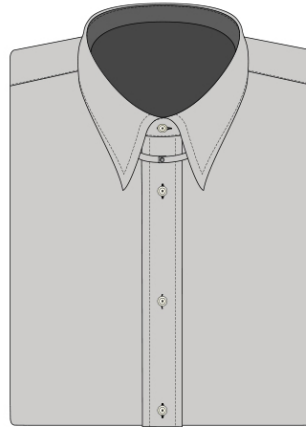


NCS
NARROW CURVE SPREAD

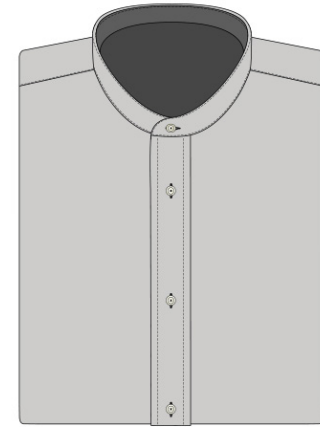
EXTERIOR OPTIONS COLLAR OPTIONS | **COLLARS**



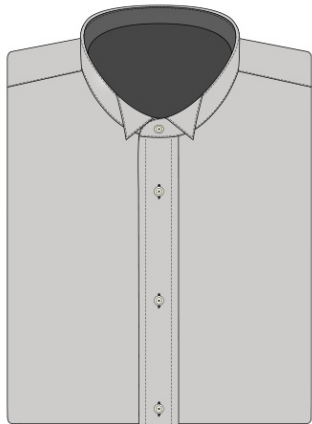
MS-1
MITERED SPREAD



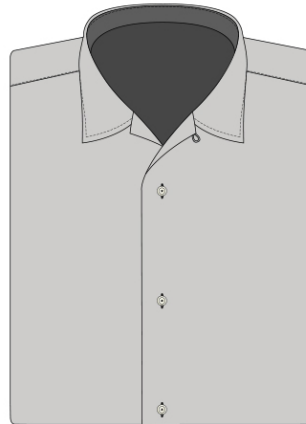
TC-1
TAB COLLAR
3" POINT \approx 2 1/2" SPREAD*



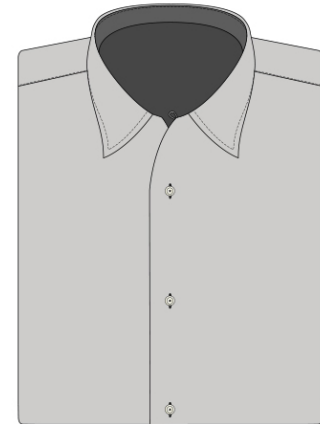
BC-1
BAND COLLAR



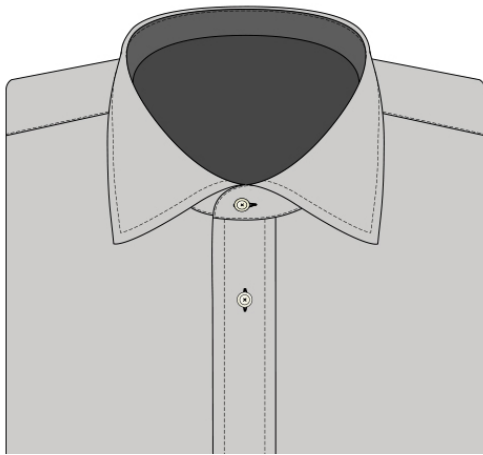
WC-1
WING COLLAR



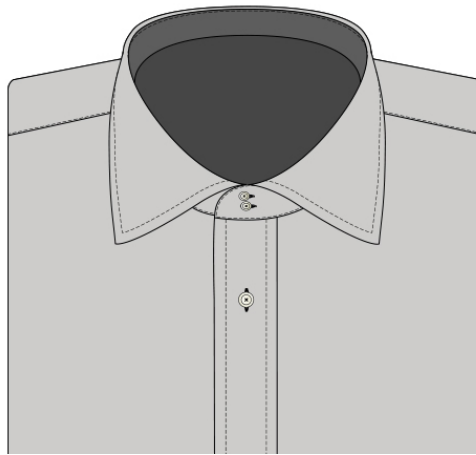
CAMP
CAMP COLLAR



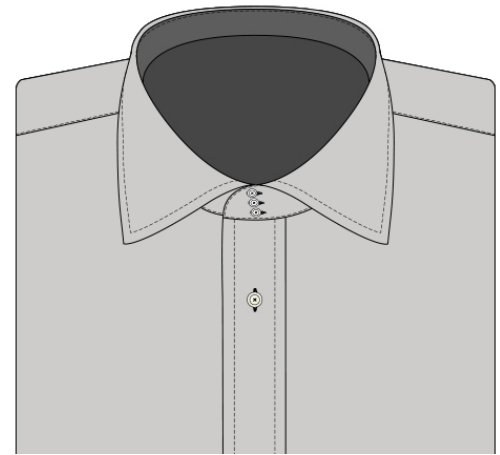
COLLAR BAND



ONE BUTTON COLLAR BAND



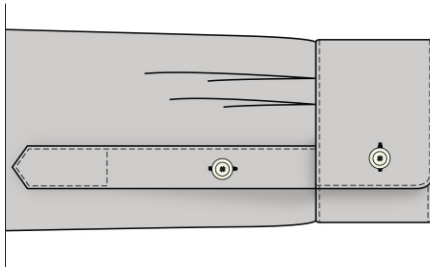
TWO BUTTON COLLAR BAND
(MINIMUM FRONT COLLAR HEIGHT IS 1 1/8")



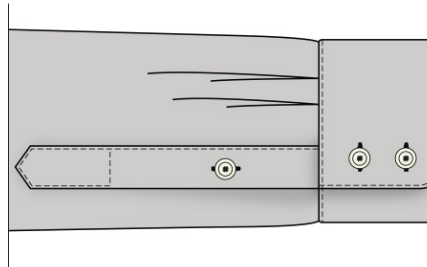
THREE BUTTON COLLAR BAND
(MINIMUM FRONT COLLAR HEIGHT IS 1 1/4")

EXTERIOR OPTIONS CUFF OPTIONS

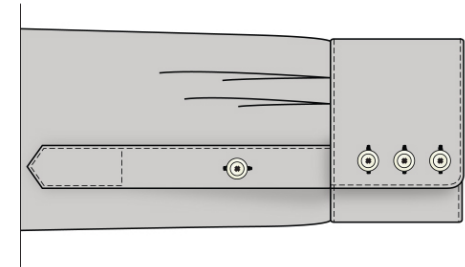
CUFF STYLE



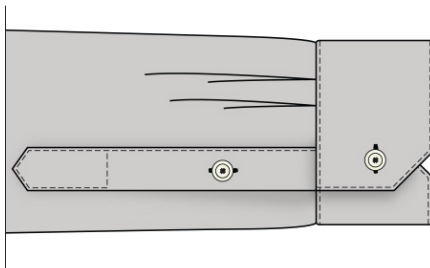
1-B
ONE BUTTON BARREL



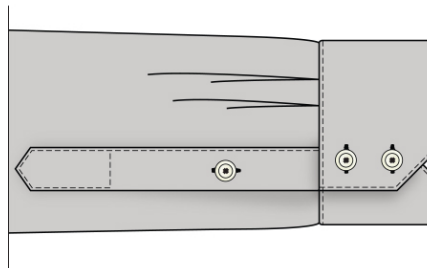
2-B
TWO BUTTON BARREL



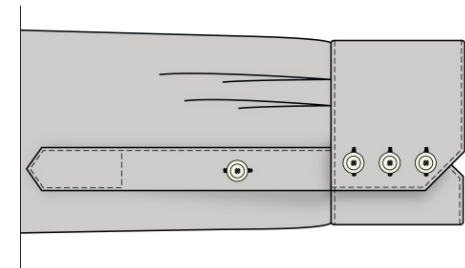
3-B
THREE BUTTON BARREL



M-1
ONE BUTTON MITERED



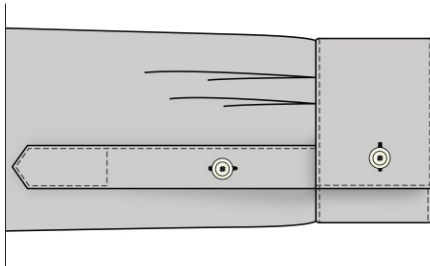
M-2
TWO BUTTON MITERED



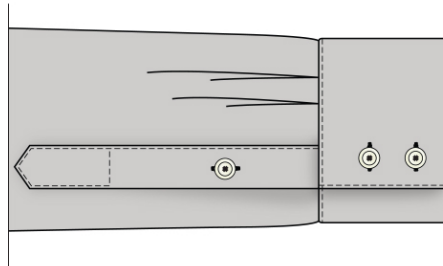
M-3
THREE BUTTON MITERED

EXTERIOR OPTIONS CUFF OPTIONS

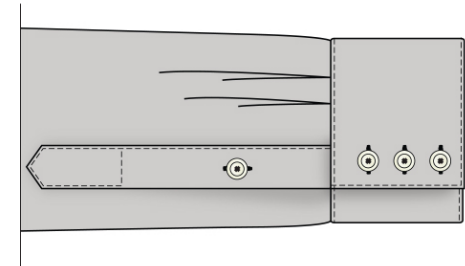
CUFF STYLE



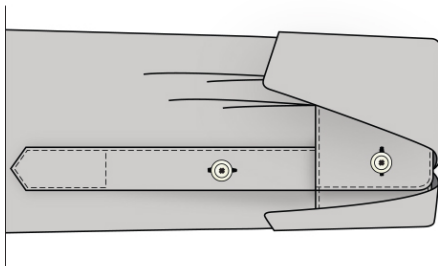
S-1
ONE BUTTON SQUARE



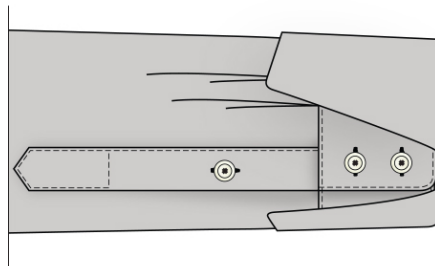
S-2
TWO BUTTON SQUARE



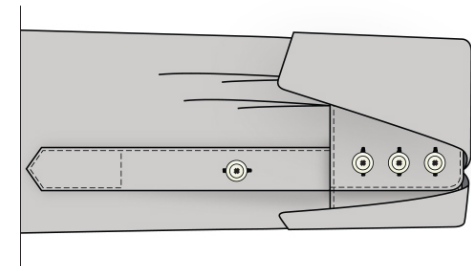
S-3
THREE BUTTON SQUARE



1-BF
ONE BUTTON FOLD



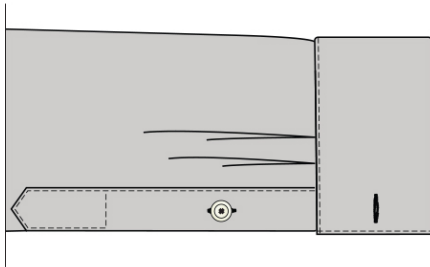
2-BF
TWO BUTTON FOLD



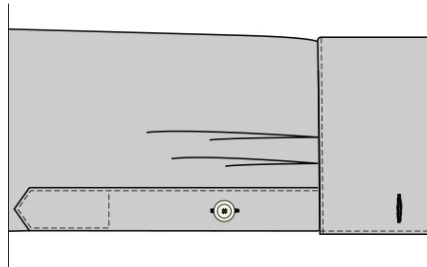
3-BF
THREE BUTTON FOLD

EXTERIOR OPTIONS | CUFF STYLE

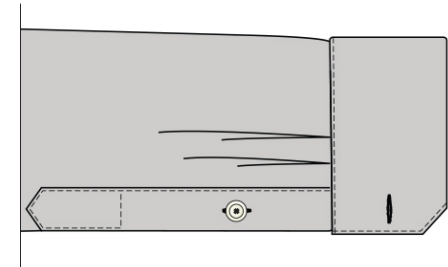
CUFF OPTIONS



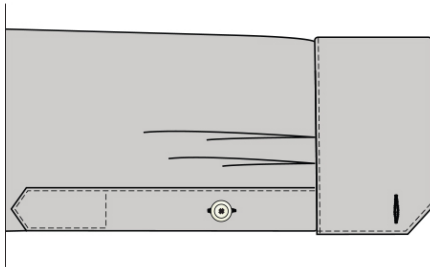
FC-1 CC
CLASSIC FRENCH (CENTER LINK)



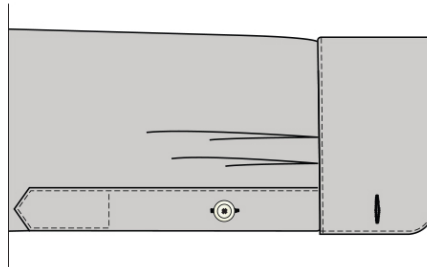
FC-2 CF
CLASSIC FRENCH (FORWARD LINK)



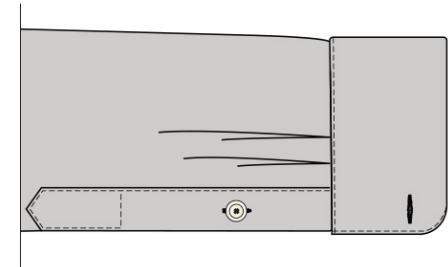
FC-3 AMC
ANGLE MITERED FRENCH (CENTER LINK)



FC-4 AMF
ANGLE MITERED FRENCH (FORWARD LINK)



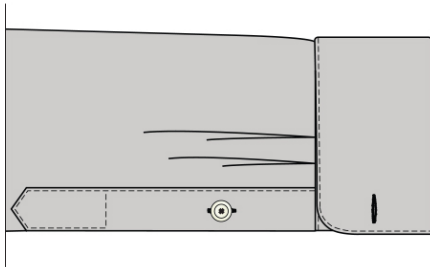
FC-5 RMC
ROUND MITERED FRENCH (CENTER LINK)



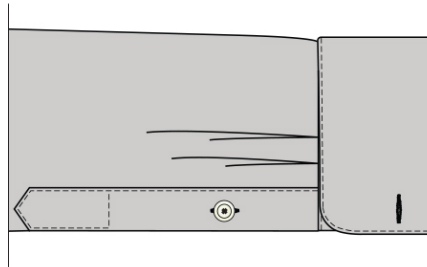
FC-6 RMF
ROUND MITERED FRENCH (FORWARD LINK)

EXTERIOR OPTIONS | CUFF STYLE

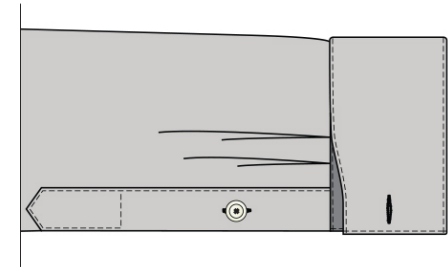
CUFF OPTIONS



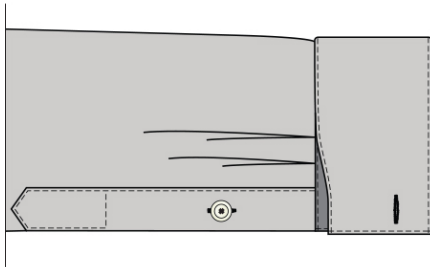
FC-7 RC
ROUNDED FRENCH (CENTER LINK)



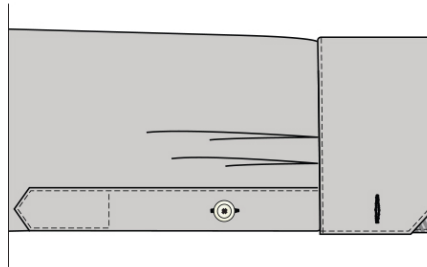
FC-8 RF
ROUNDED FRENCH (FORWARD LINK)



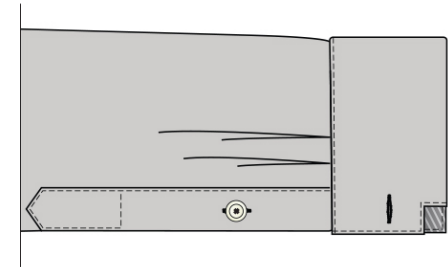
FC-9 SC
SCALLOP FRENCH (CENTER LINK)



FC-10 SF
SCALLOP FRENCH (FORWARD LINK)

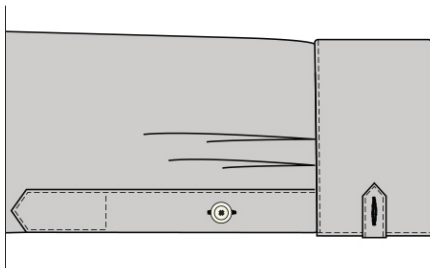


FC-11 WA
WINDOW ANGLED FRENCH CUFF

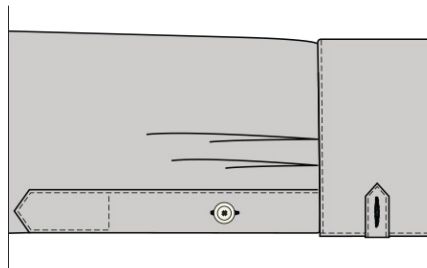


FC-12 WS
WINDOW SQUARE FRENCH CUFF

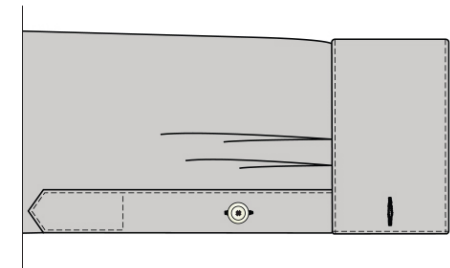
EXTERIOR OPTIONS CUFF OPTIONS | CUFF STYLE



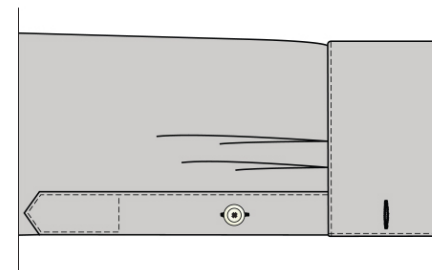
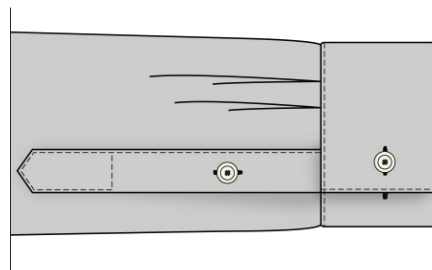
FC-TAB
CLASSIC FRENCH WITH TAB



BC-TAB
NON FOLD CUFF WITH TAB



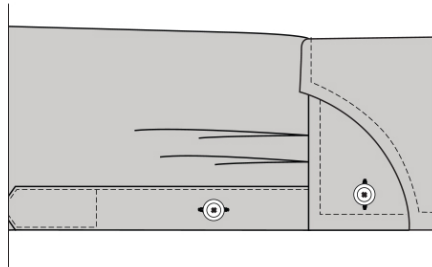
NFFC
NON FOLD FRENCH



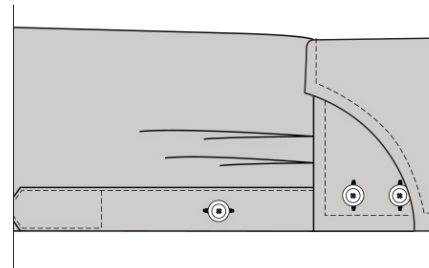
CC-1
NON FOLD CONVERTIBLE

EXTERIOR OPTIONS CUFF OPTIONS

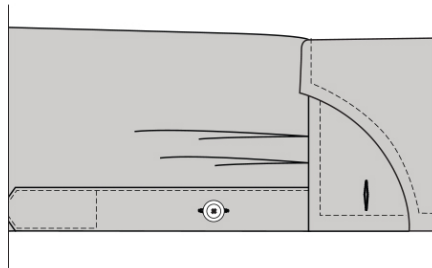
CUFF STYLE



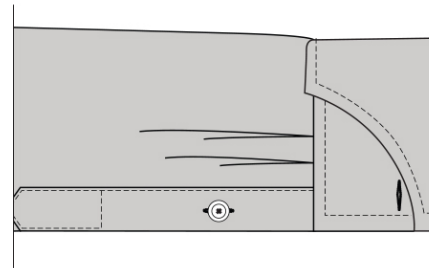
1-BCF
1 BUTTON CURVED FOLD



2-BCF
2 BUTTON CURVED FOLD

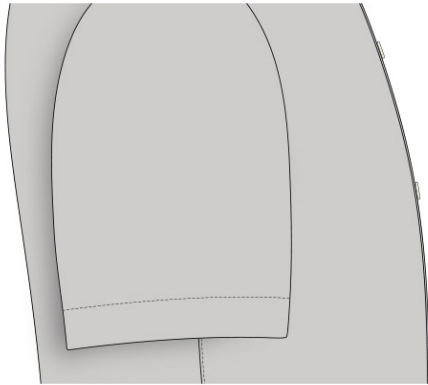


FC-12 CC
CURVED FOLD FRENCH (CENTER LINK)

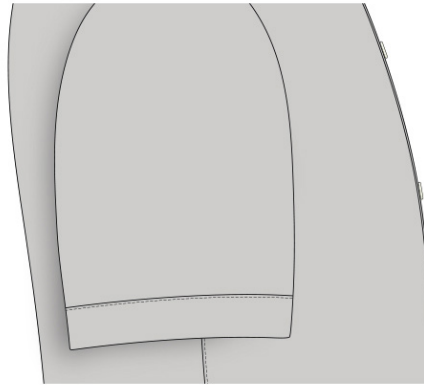


FC-13 CF
CURVED FOLD FRENCH (FOWARD LINK)

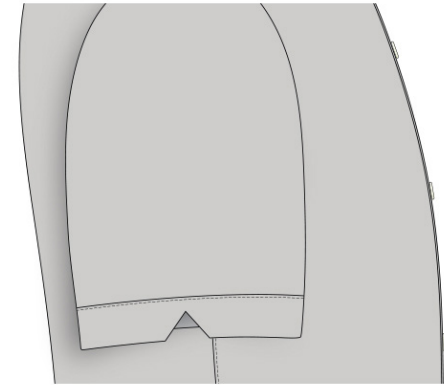
EXTERIOR OPTIONS CUFF OPTIONS | **SLEEVE CUFF**



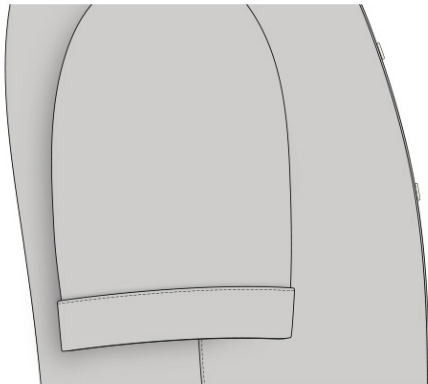
SSP
SHORT SLEEVE PLAIN



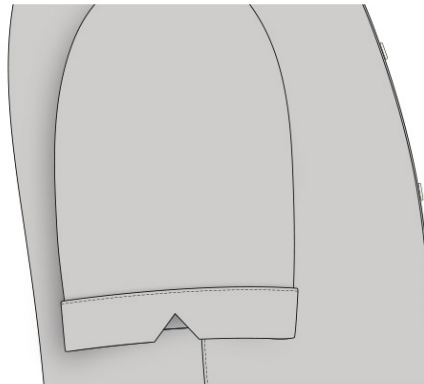
SSH
SHORT SLEEVE HEM



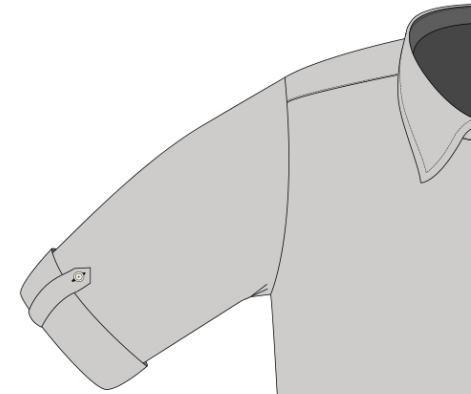
SSV
SHORT SLEEVE HEM WITH VENT



SSC
SHORT SLEEVE WITH CUFF



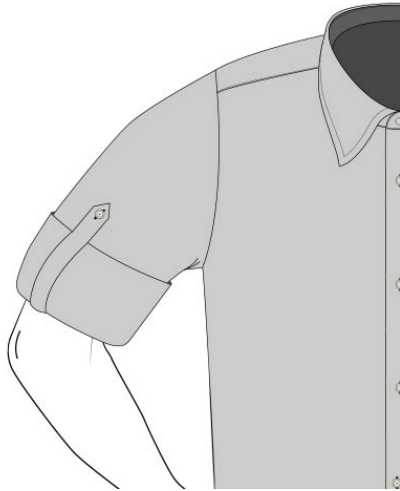
SVC
SHORT SLEEVE CUFF WITH VENT



ADDITIONAL CUFF OPTIONS:
SLEEVE WITH TAB AND BUTTON

EXTERIOR OPTIONS
CUFF OPTIONS

SLEEVE CUFF - ADDITIONAL OPTIONS



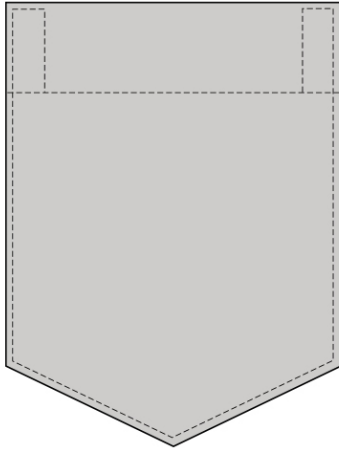
SLEEVE WITH STRAP AND BUTTON
ELBOW POSITION



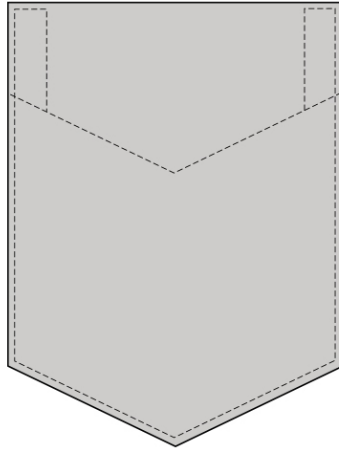
SLEEVE WITH STRAP AND BUTTON
FOREARM POSITION

EXTERIOR OPTIONS
POCKET OPTIONS

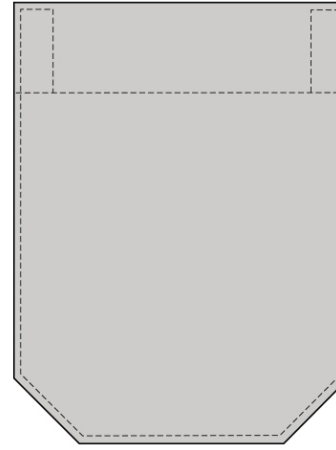
POCKETS



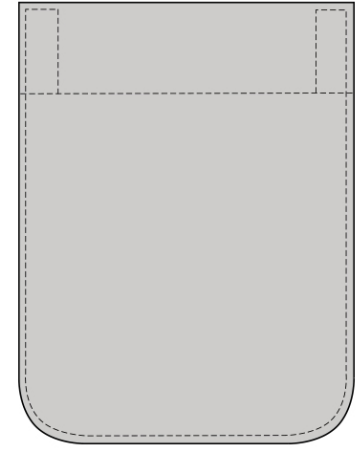
PLAIN



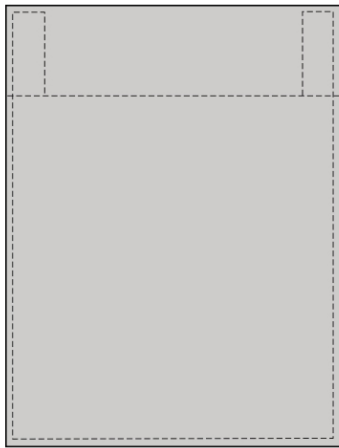
V HEM



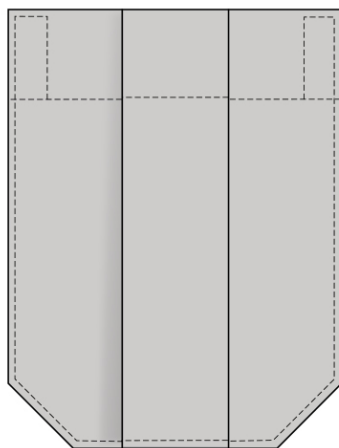
MITERED BOTTOM



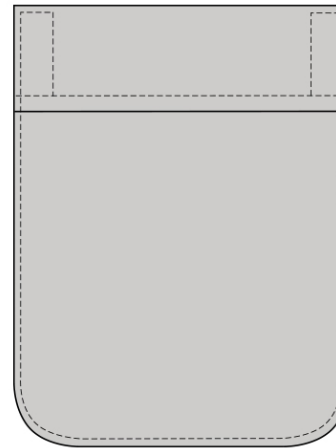
ROUNDED BOTTOM



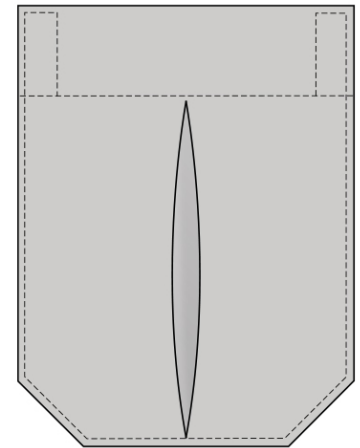
SQUARE



PLEATED



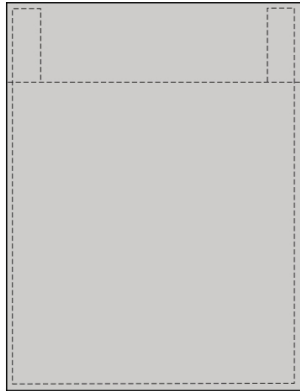
ROUNDED WELT



INVERTED PLEAT

EXTERIOR OPTIONS
POCKET OPTIONS

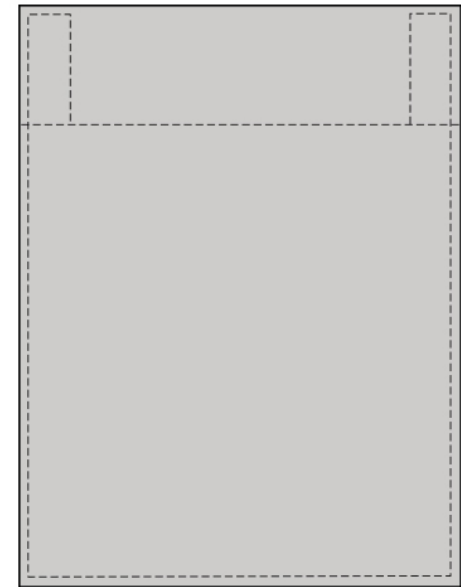
POCKETS



SMALL



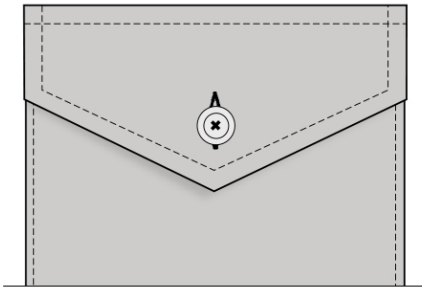
STANDARD



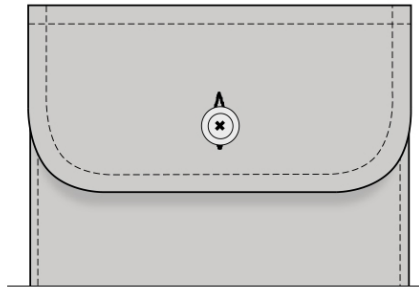
OVERSIZED

EXTERIOR OPTIONS
POCKET OPTIONS

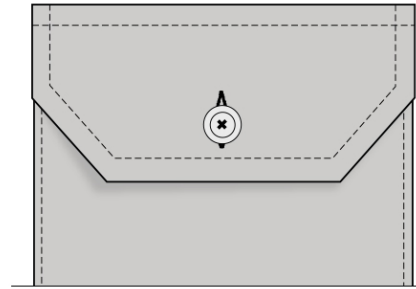
POCKET FLAPS / BUTTONS



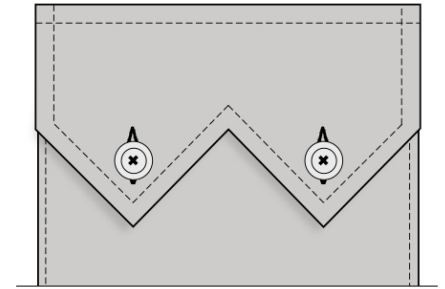
POINT FLAP



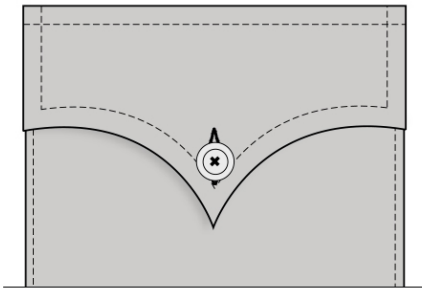
ROUNDED FLAP



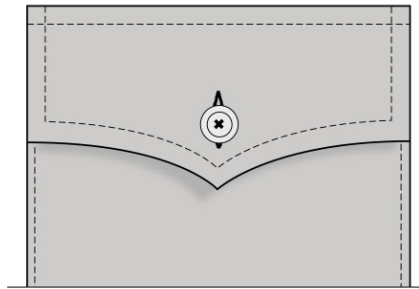
MITERED FLAP



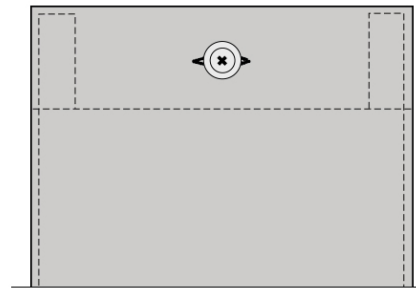
SAWTOOTH FLAP



FULL PANHANDLE FLAP

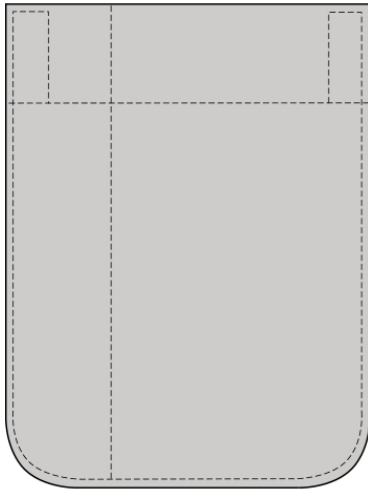


HALF PANHANDLE FLAP



BUTTON THROUGH

ADDITIONAL POCKET OPTIONS

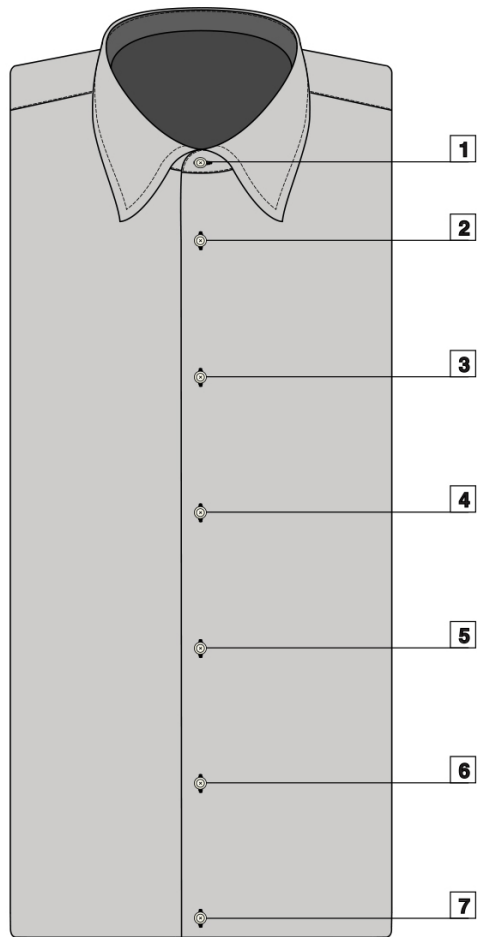


PEN POCKET

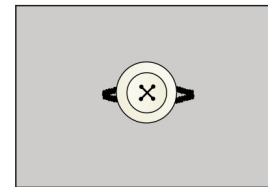


EYEGLOSS POCKET

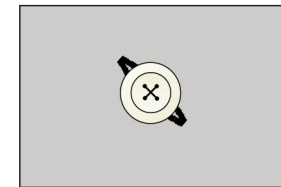
BUTTON SEQUENCE REFERENCE



ADDITIONAL BUTTON OPTIONS



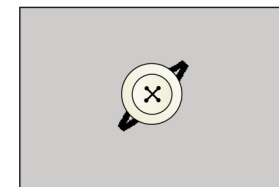
0 °



45 °



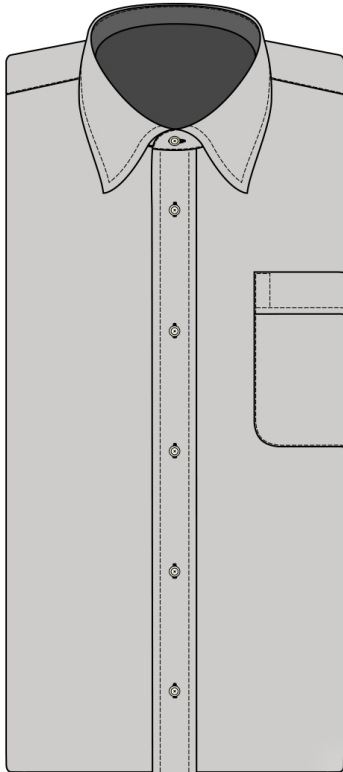
90 °



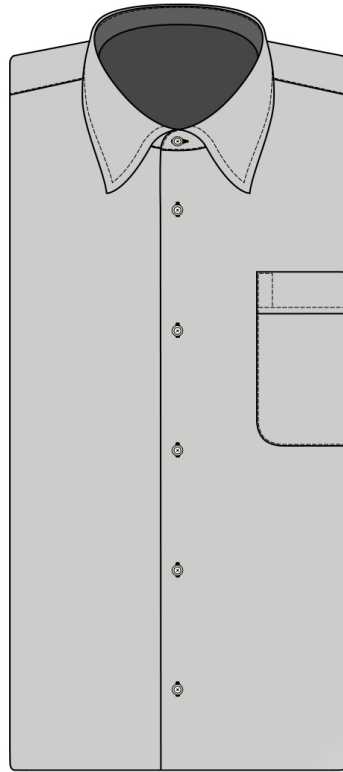
135 °

EXTERIOR OPTIONS
FRONT OPTIONS

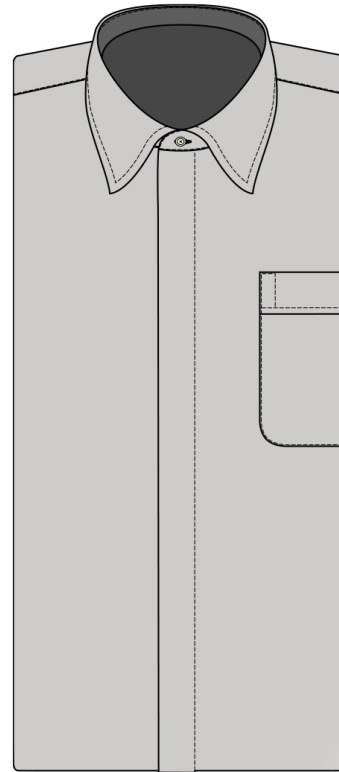
DRESS SHIRT FRONTS



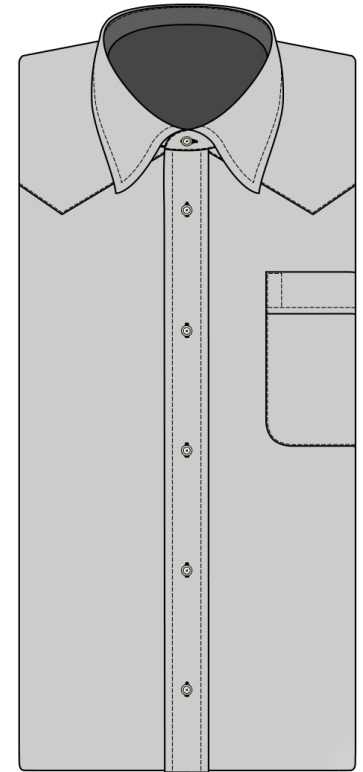
PLACKET



**PLAIN
NO PLACKET**



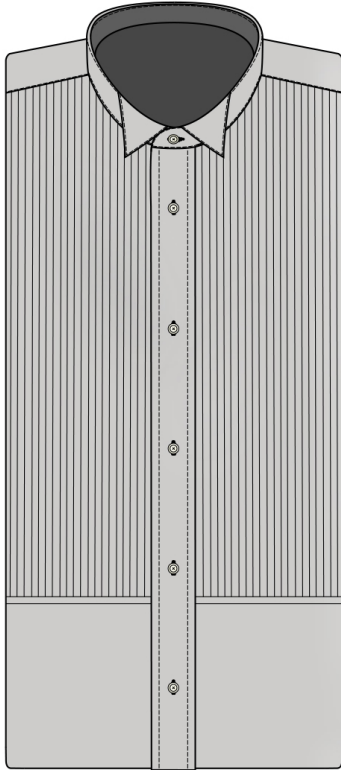
**FLY FRONT
COVERED**



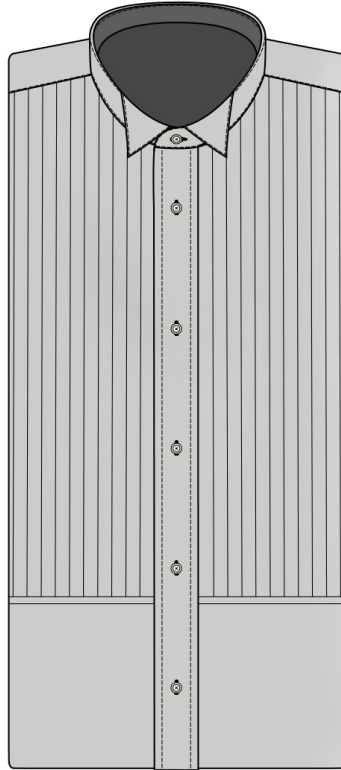
WESTERN FRONT

EXTERIOR OPTIONS
FRONT OPTIONS

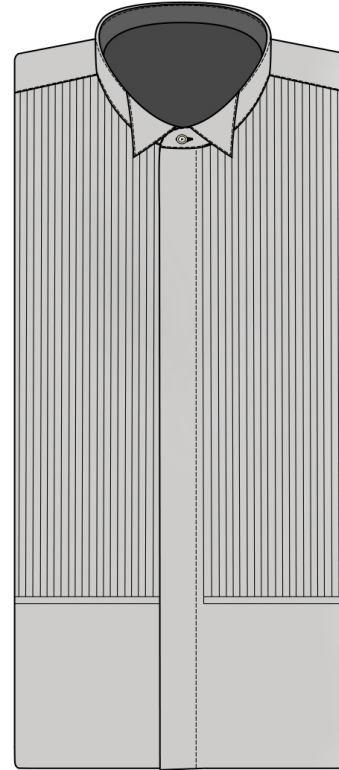
TUXEDO SHIRT FRONTS



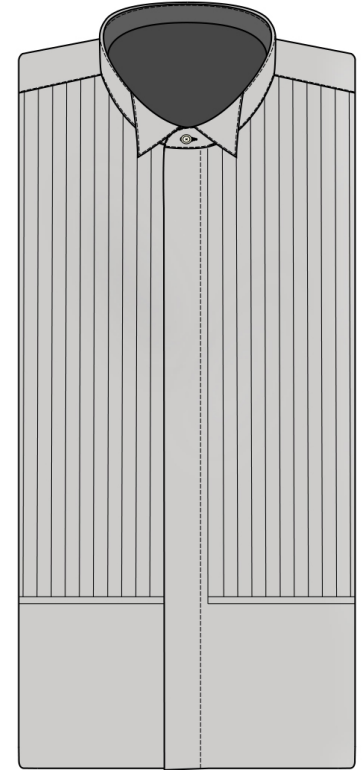
1/4" PLEAT



1/2" PLEAT



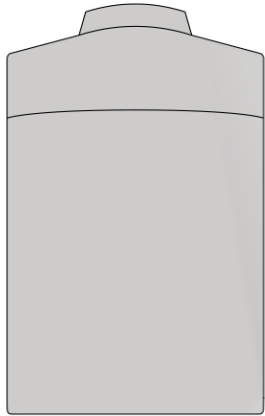
**1/4" PLEAT
(HIDDEN BUTTON)**



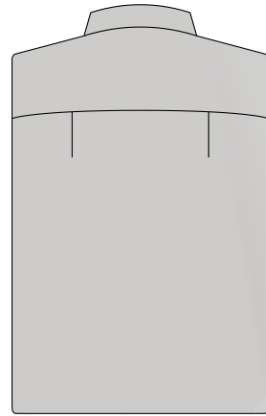
**1/2" PLEAT
(HIDDEN BUTTON)**

EXTERIOR OPTIONS
BACK OPTIONS

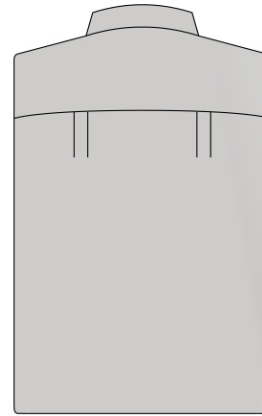
BACKS



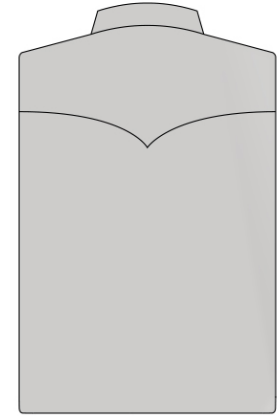
PLAIN



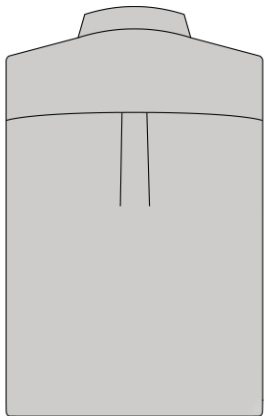
SHOULDER PLEATS



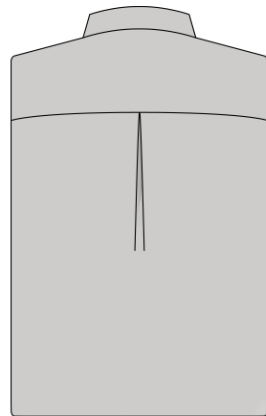
**SHOULDER PLEATS
(DOUBLE)**



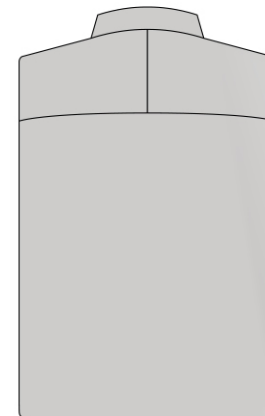
WESTERN



**CENTER
BOX PLEAT**



**INVERTED CENTER
BOX PLEAT**



**ADDITIONAL BACK OPTIONS:
SPLIT YOKE**

EXTERIOR OPTIONS
SHOULDER OPTIONS

EPAULETTES



NONE



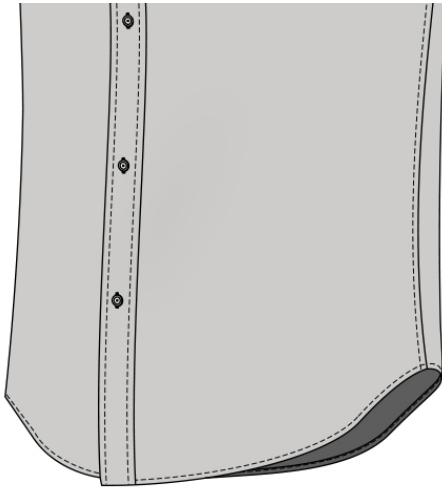
**EPAULETTES
NO LOOPS**



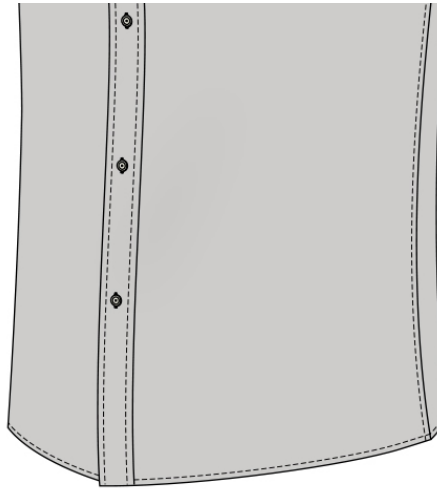
**EPAULETTES
WITH LOOPS**

EXTERIOR OPTIONS
TAIL OPTIONS

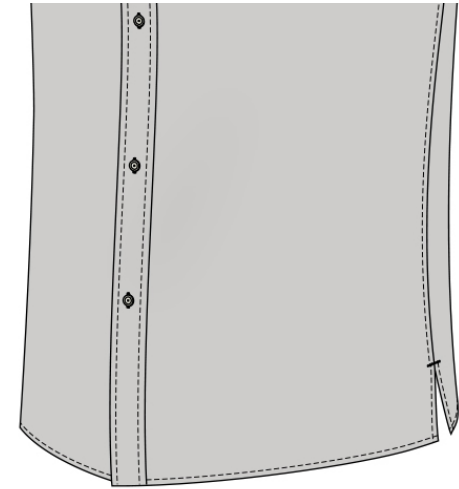
TAIL STYLES



**ROUNDED BOTTOM
(STANDARD)**

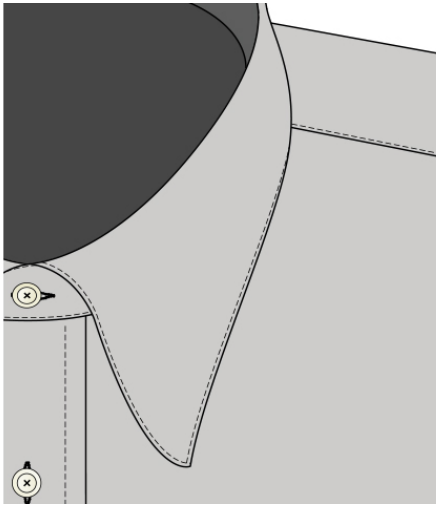


SQUARE BOTTOM

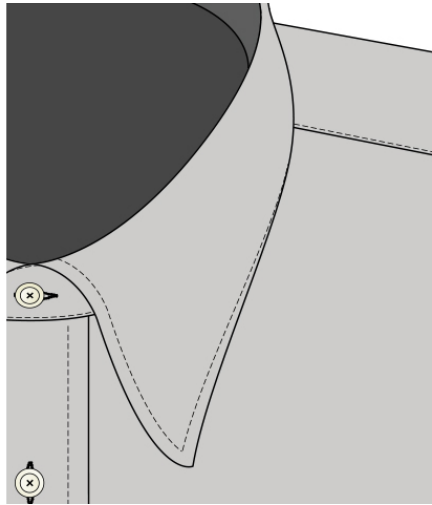


**SQUARE BOTTOM
WITH VENT**

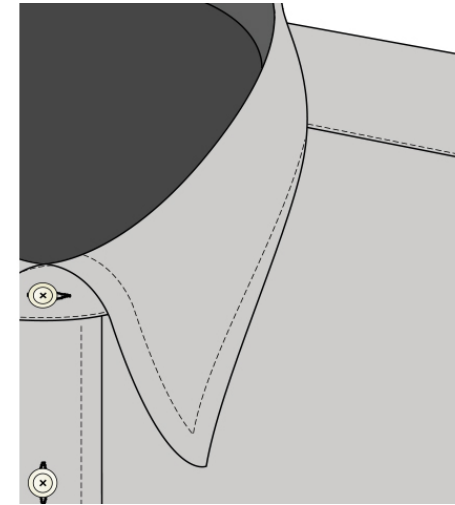
COLLAR STITCHING POSITION



1/16" STITCHING

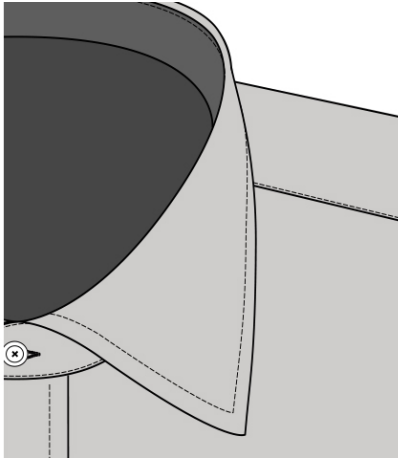


1/8" STITCHING

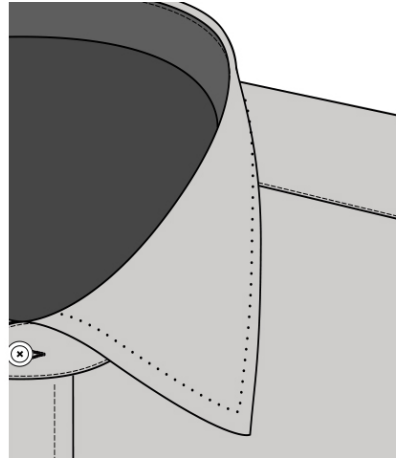


1/4" STITCHING

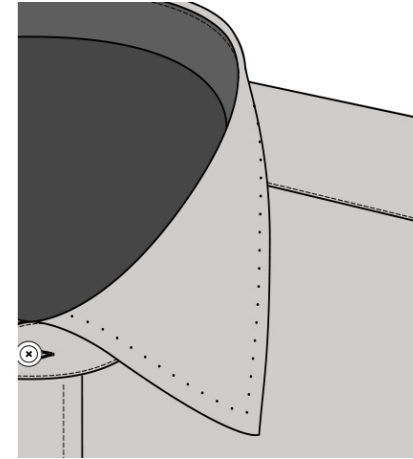
COLLAR STITCHING



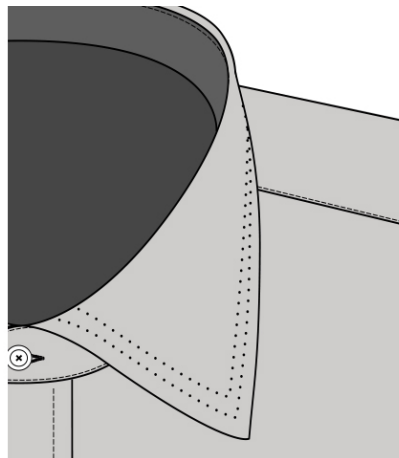
SINGLE NEEDLE



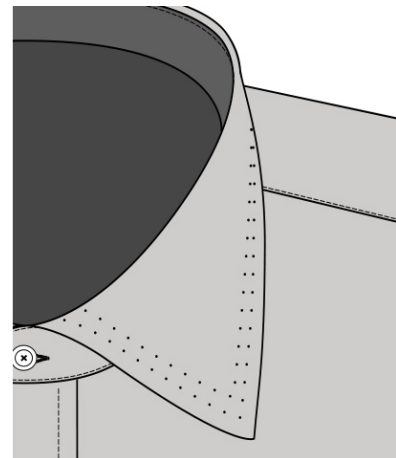
PIC STITCH



WIDE PIC STITCH

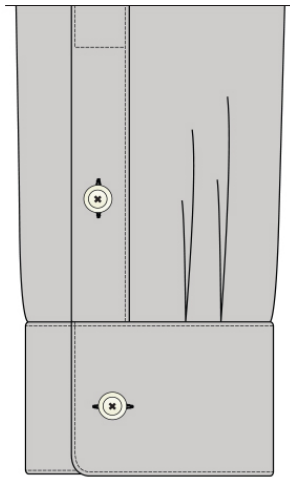


DOUBLE PIC STITCH

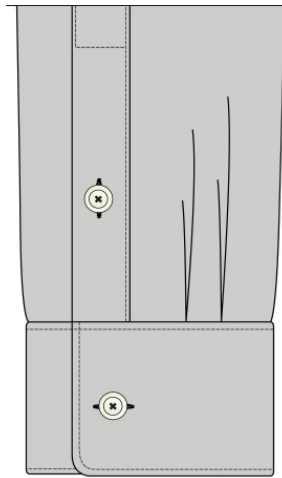


DOUBLE WIDE PIC STITCH

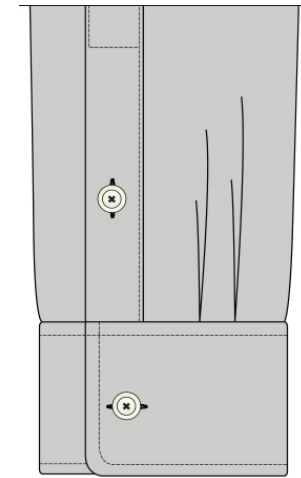
CUFF STITCHING POSITION



1/16" STITCHING

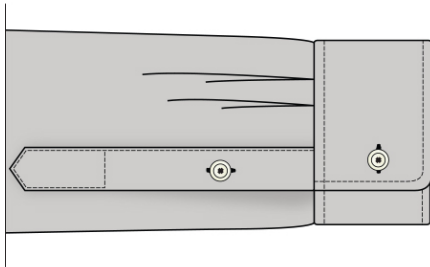


1/8" STITCHING

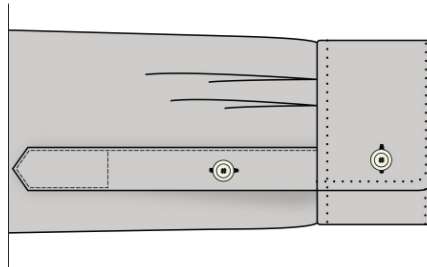


1/4" STITCHING

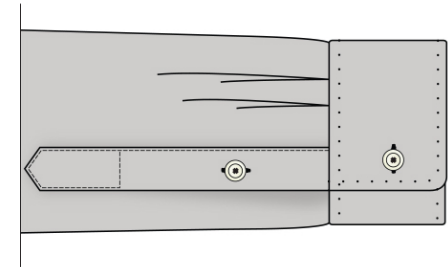
CUFF STITCHING



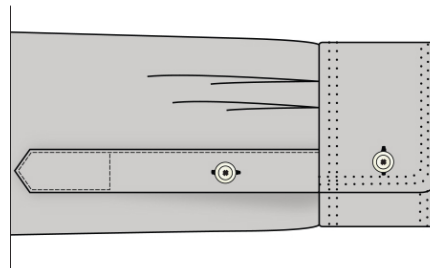
SINGLE NEEDLE



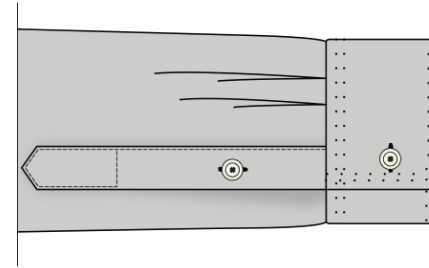
PIC STITCH



WIDE PIC STITCH



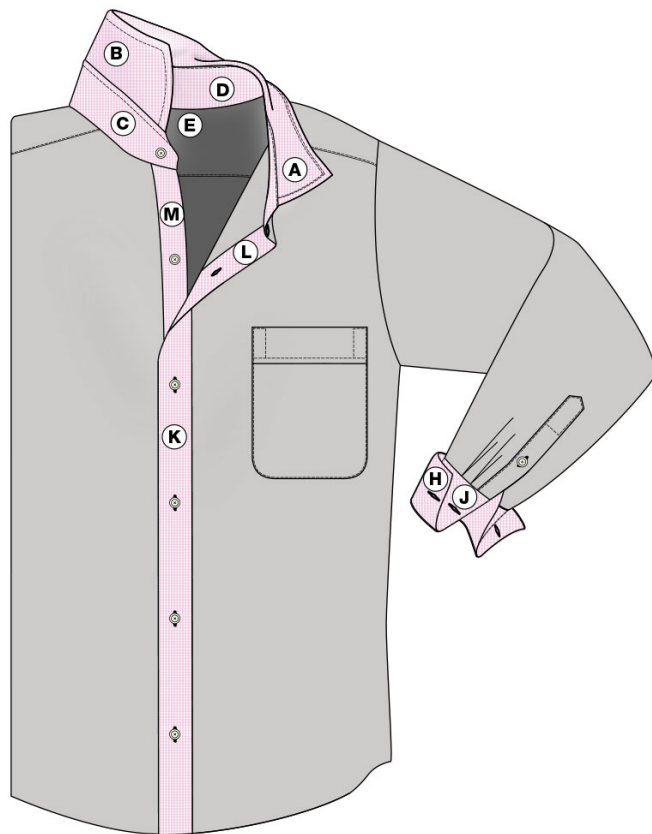
DOUBLE PIC STITCH



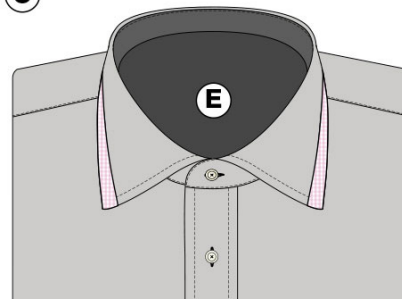
DOUBLE WIDE PIC STITCH

EXTERIOR OPTIONS
TRIM OPTIONS

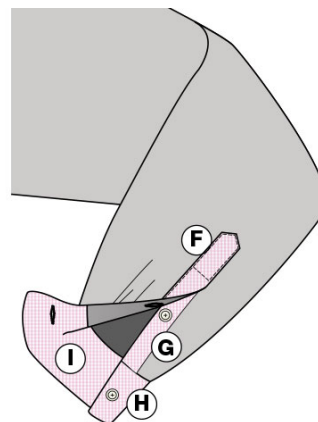
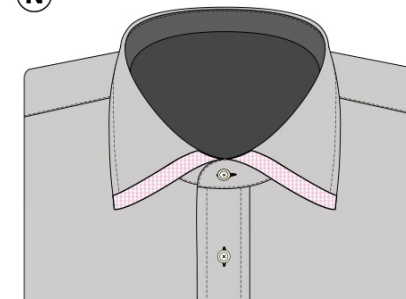
TRIM FABRIC POSITIONS



O

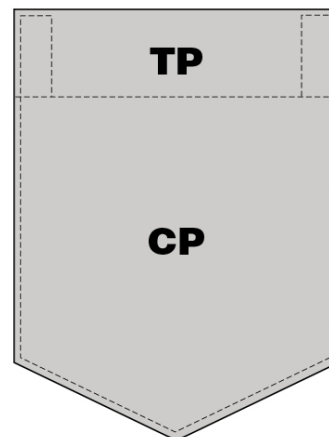
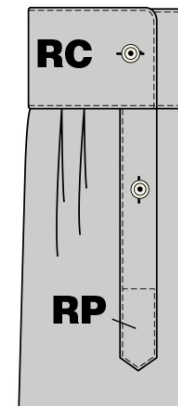
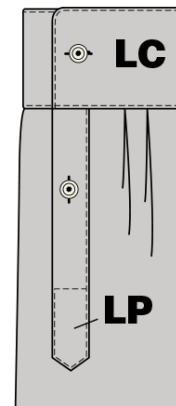
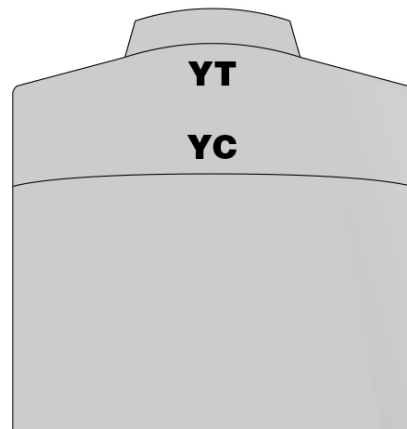
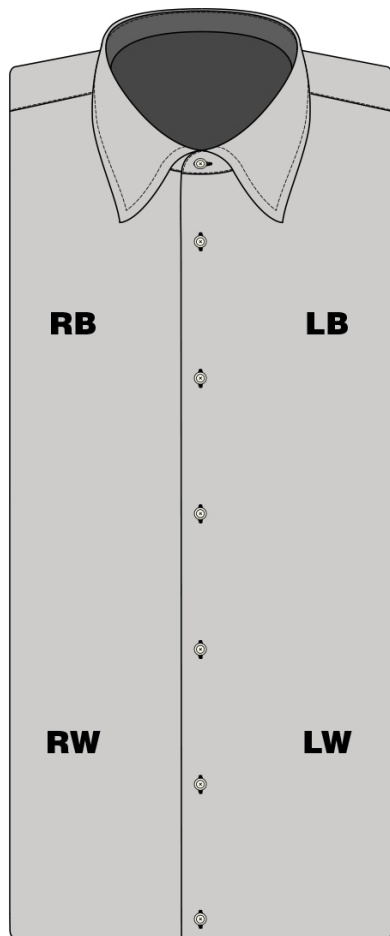


N



- A** - Top of Collar Leaf
- B** - Under Collar Leaf
- C** - Outside Neckband
- D** - Inside Neckband
- E** - Inside Yoke
- F** - Outside Large Sleeve Plackets
- G** - Outside Small Sleeve Plackets
- H** - Outside Cuff
- I** - Inside Of Barrel Cuff
- J** - Inside Of French Cuff
- K** - Outside Front Placket
- L** - Back Of Front Placket
- M** - Front Of Back Placket
- N** - Accent Edge Collar Points
- O** - Accent Edge Collar Leaf

MONOGRAM LOCATIONS



- RB** - Right Breast
- LB** - Left Breast
- RW** - Right Waist
- LW** - Left Waist
- YT** - Yoke Top
- YC** - Yoke Center
- RP** - Right Placket
- LP** - Left Placket
- TP** - Top Pocket
- CP** - Center Pocket
- IC** - Inverted Cuff

AVAILABLE FONTS

*ABCDEFGHIJKLMNOPQRSTUVWXYZ
abcdefghijklmnopqrstuvwxyz
1234567890?!@*~;,%()+*

Calligraphy

**ABCDEFGHIJKLMNOPQRSTUVWXYZ
abcdefghijklmnopqrstuvwxyz
1234567890?!@*~;,%()+**

Times Roman

**ABCDEFGHIJKLMNOPQRSTUVWXYZ
abcdefghijklmnopqrstuvwxyz
1234567890?!@*~;,%()+**

Block

*ABCDEFGHIJKLMNOPQRSTUVWXYZ
abcdefghijklmnopqrstuvwxyz
1234567890?!@*~;,%()+*

Script

**ABCDEFGHIJKLMNOPQRSTUVWXYZ
1234567890?!@*~;,%()+**

Copper Plate

**ABCDEFGHIJKLMNOPQRSTUVWXYZ
abcdefghijklmnopqrstuvwxyz
1234567890?!@*~;,%()+**

Rockwell

**ABCDEFGHIJKLMNOPQRSTUVWXYZ
abcdefghijklmnopqrstuvwxyz
1234567890?!@*~;,%()+**

Bradley

**ABCDEFGHIJKLMNOPQRSTUVWXYZ
abcdefghijklmnopqrstuvwxyz
1234567890?!@*~;,%()+**

Jazz

**ABCDEFGHIJKLMNOPQRSTUVWXYZ
abcdefghijklmnopqrstuvwxyz
1234567890?!@*~;,%()+**

Dom Casual

**ABCDEFGHIJKLMNOPQRSTUVWXYZ
1234567890?!@*~;,%()+**

Outline

AVAILABLE TEMPLATES



Diamond 1 Letter



Diamond 2 Letters



Diamond



Diamond 3 Letters V2



Diamond 3 Letters V3



Circle 1 Letter



Circle 2 Letters



Circle 3 Letters



Varsity 1 Letter



Copper Plate 3 Letters



Script 1 Letter



Script 2 Letters



Script 3 Letters





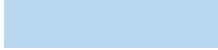

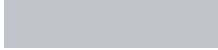








Diagonal 2 Letters



Stack 2 Letters

AVAILABLE COLORS

| | |
|---|------------|
|  | Black |
|  | Navy |
|  | Royal Blue |
|  | Med Blue |
|  | Light Blue |
|  | Med Gray |
|  | Silver |
|  | Red |
|  | Burgandy |
|  | White |
|  | Tan |
|  | Gold |
|  | Taupe |

| | |
|---|------------|
|  | Yellow |
|  | Purple |
|  | Pink |
|  | Salmon |
|  | Chocolate |
|  | Med Brown |
|  | Green |
|  | Charcoal |
|  | Orange |
|  | Lavander |
|  | Dark Olive |
|  | Fairway |