

STYLES

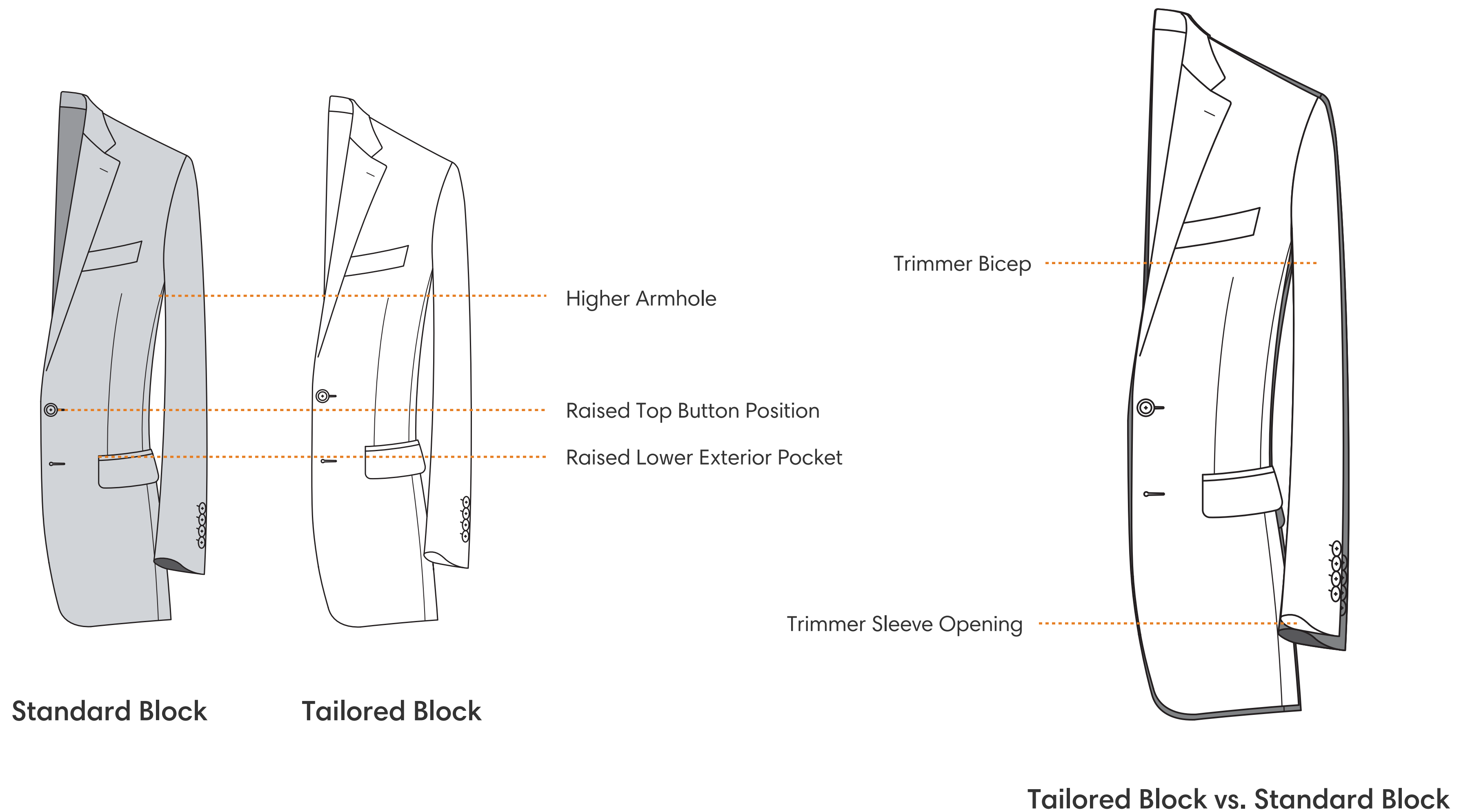
CONDENSED MANUAL

Tailoring Grades

CSC		Mayfair*	Full Canvas, 70% Hand Sewn
		Buckingham	Full Canvas
		Windsor	Half Canvas
		Tuscany*	Unstructured
SWK		Sorrento*	Unstructured with limited options, only stretch fabrics available, alpha sizing

* Only available at iD factory

Pattern Blocks

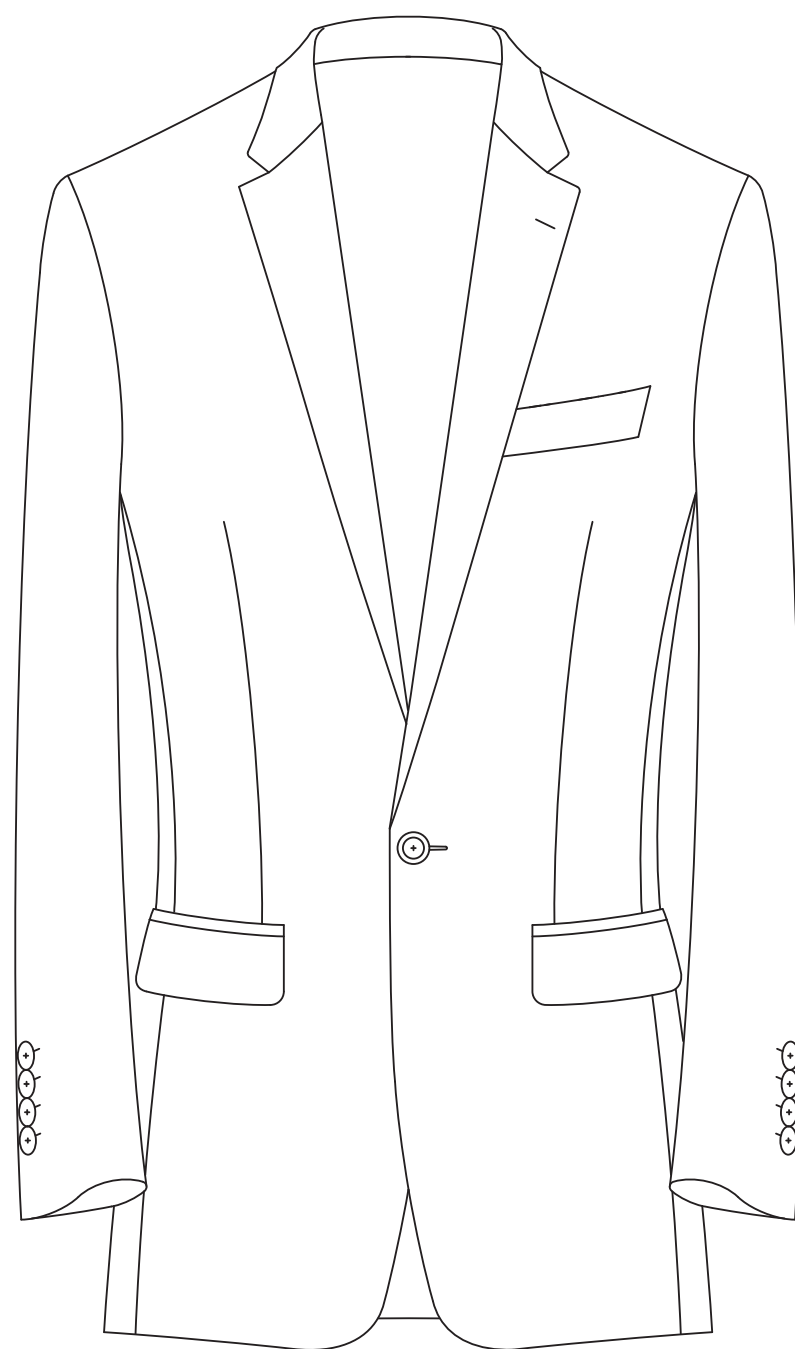


All options available except Shooting Jacket specific options
Not available for Tuscany
Not available for Swacket

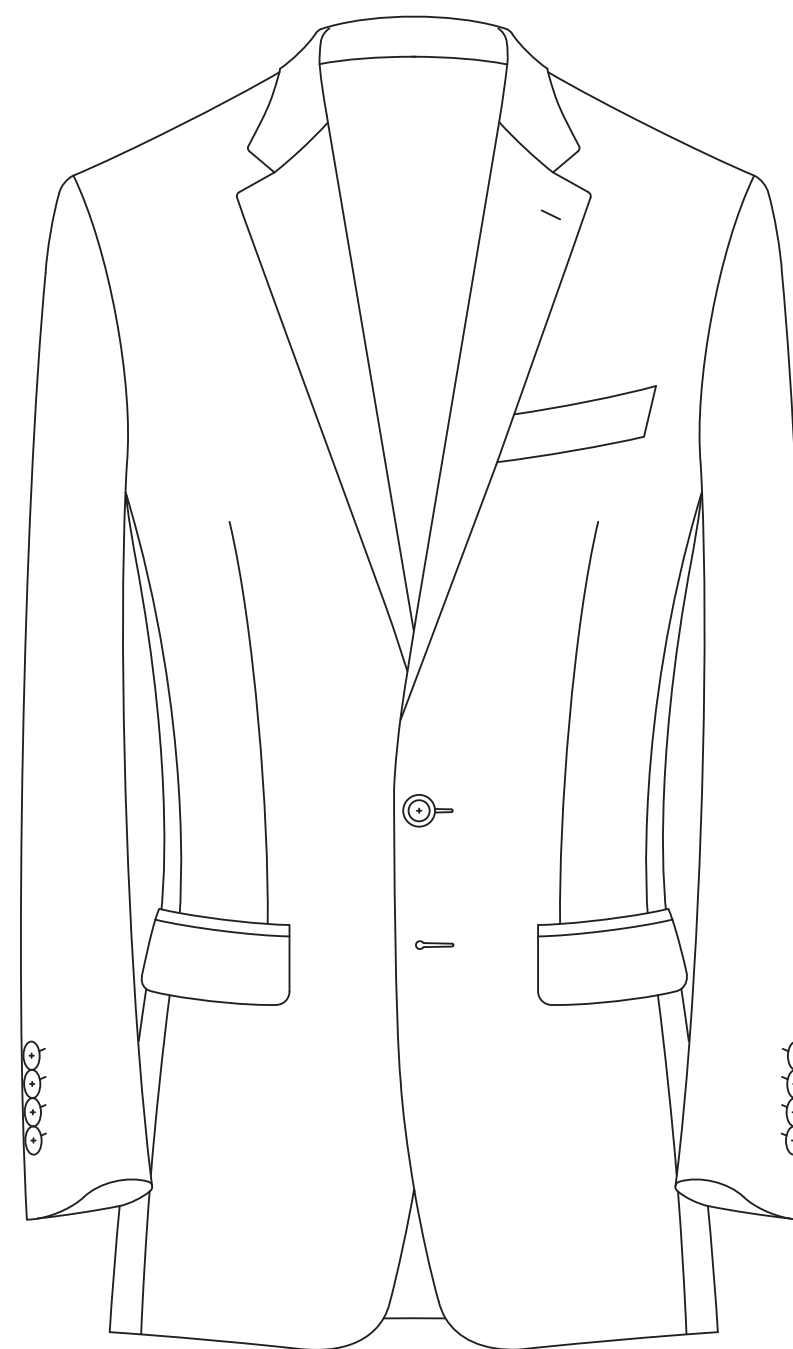
Pattern Blocks

	TAILORED Size 40			STANDARD Size 40		
	Trim	Regular	Easy	Trim	Regular	Easy
Finished Chest	42	43	44	44	45	46
Skin Chest Overage	+2"	+3"	+4"	+4"	+5"	+6"
Point to Point	17 ½	17 ¾	18	18 ¼	18 ¾	19 ¼
Half Back	8 ⅝	8 ¾	8 ⅞	8 ¾	9	9 ¼
Half Girth	19 ⅜	19 ⅞	20 ⅜	20 ½	21	21 ½
Coat Length	29 ⅝	29 ¾	29 ⅞	29 ¾	30 ¼	30 ¾
InSleeve	16 ⅞	16 ⅞	16 ⅞	17 ¼	17 ¼	17 ¼
OutSleeve	24 ¼	24 ⅜	24 ½	25 ⅜	25 ⅜	25 ⅜
Bicep Circumference	16 ¼	16 ⅜	16 ⅝	16 ⅜	16 ¾	17
Sleeve End Circumference	11 ¼	11 ¼	11 ½	11 ¾	12	12 ¼
Shoulder To Top Button Two Button Jacket	16 ¾	16 ⅞	17 ⅞	17 ⅝	18 ¼	18 ⅞

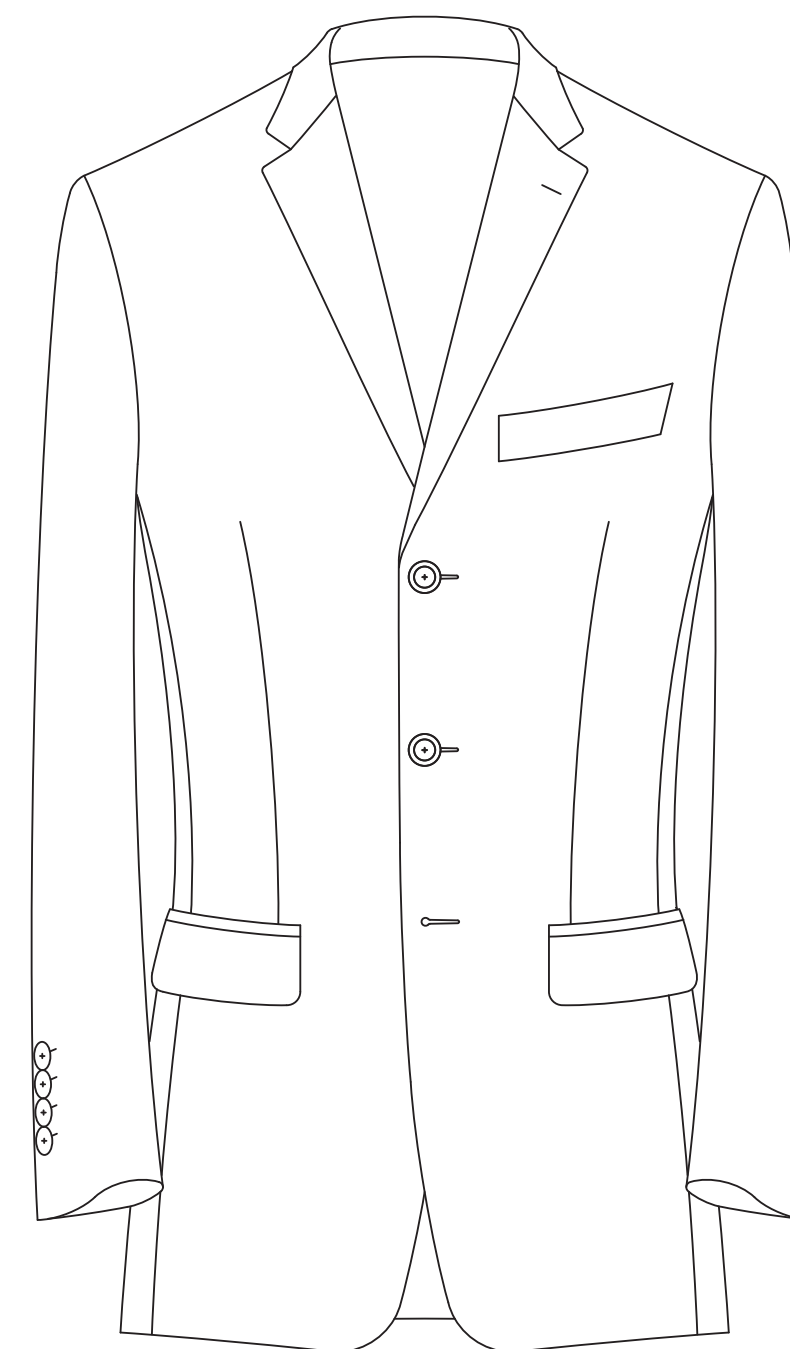
Single Breasted Models



One Button

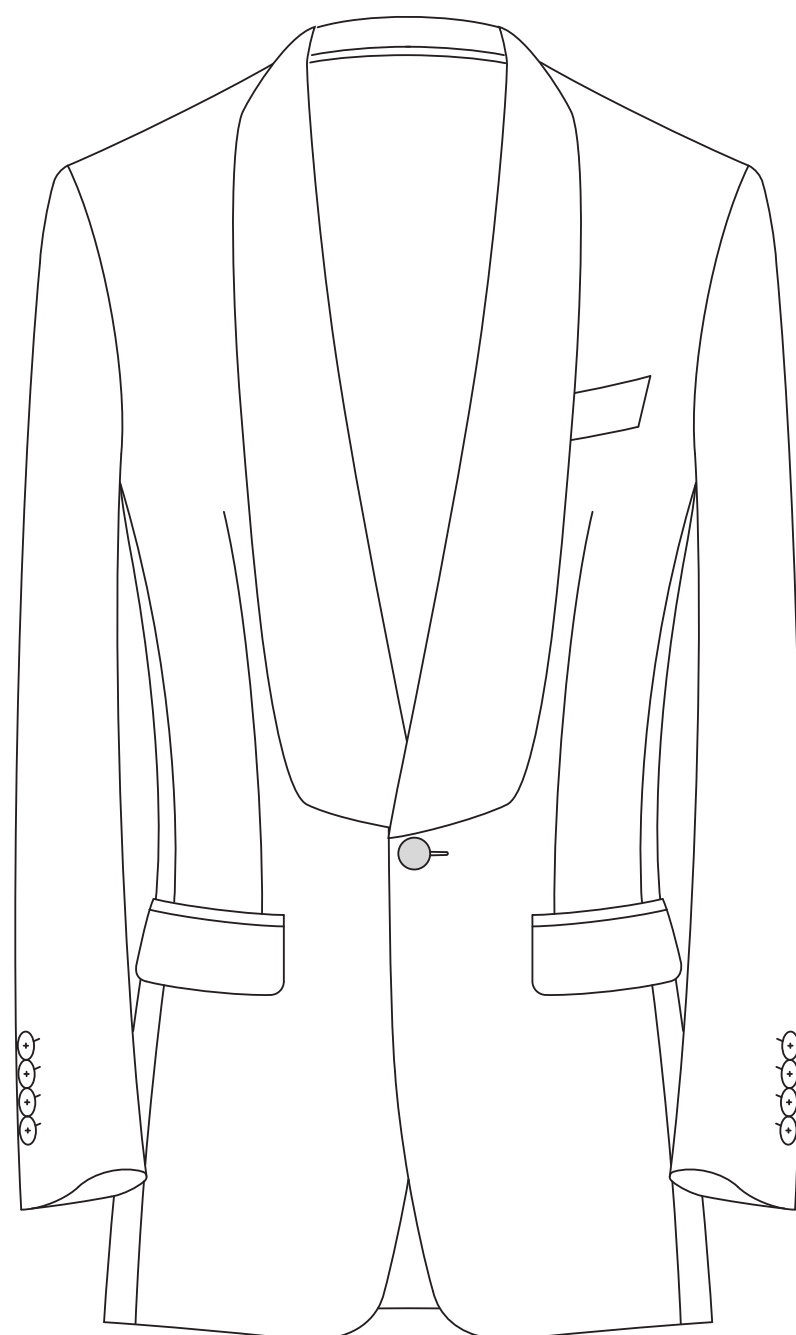


Two Button



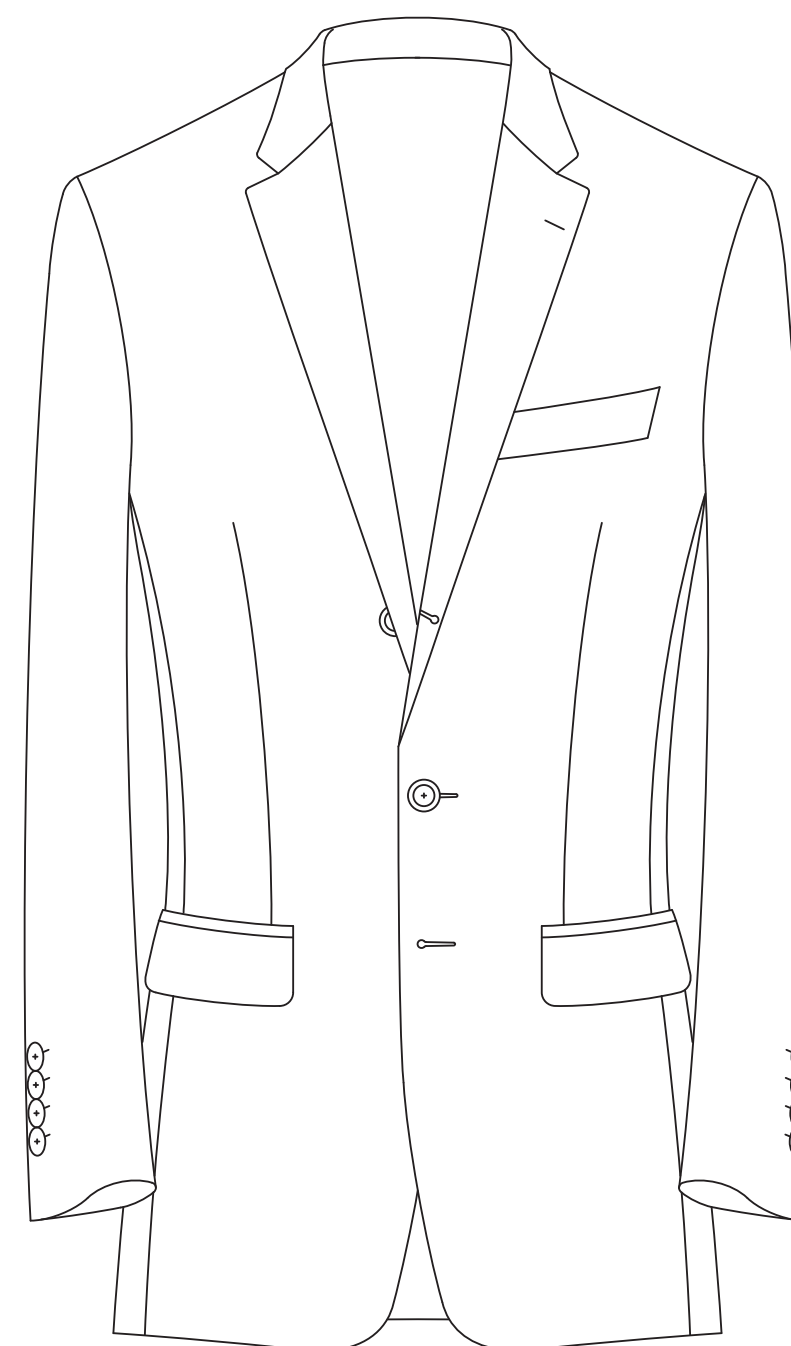
Three Button

Single Breasted Specialty Models



Fashion Shawl*

One Button Only

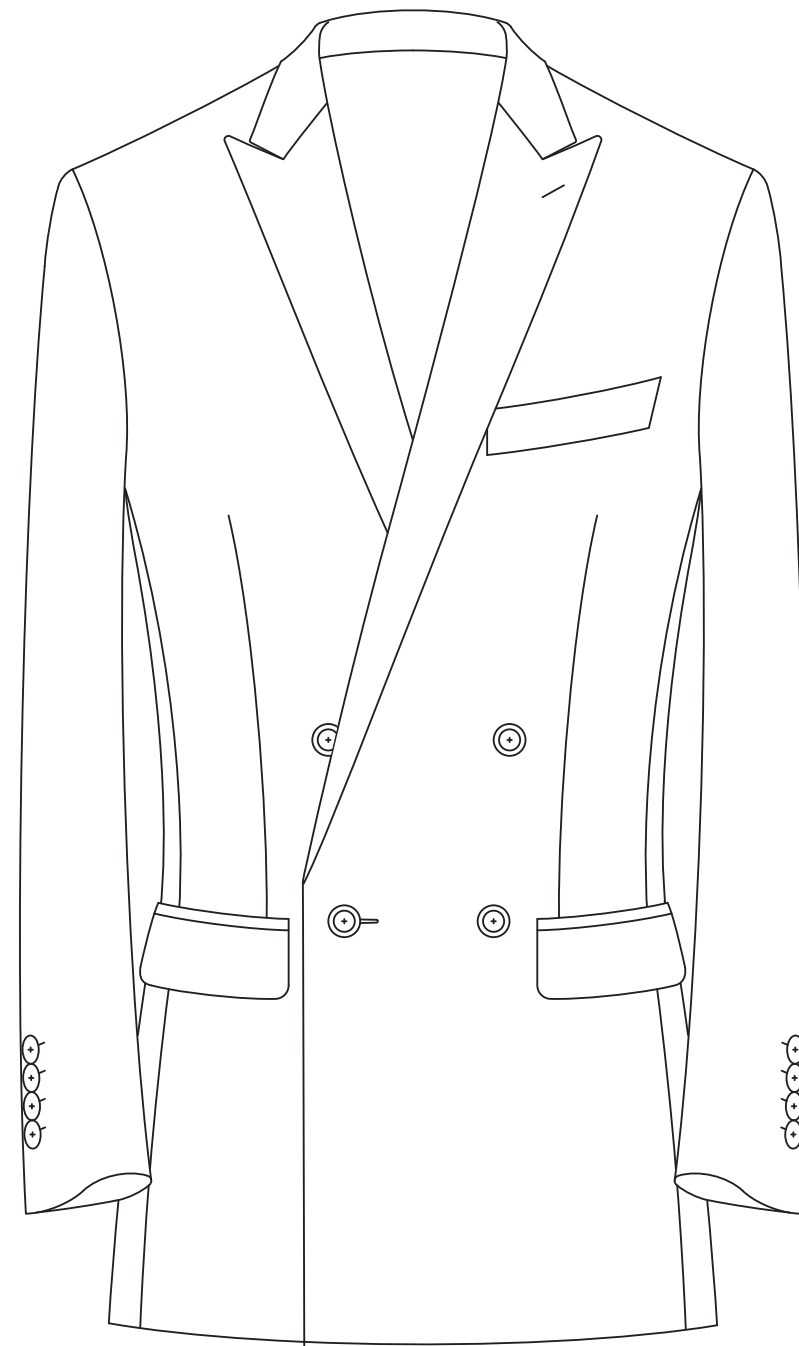


Three Button Rolled to Two

Three Button Only

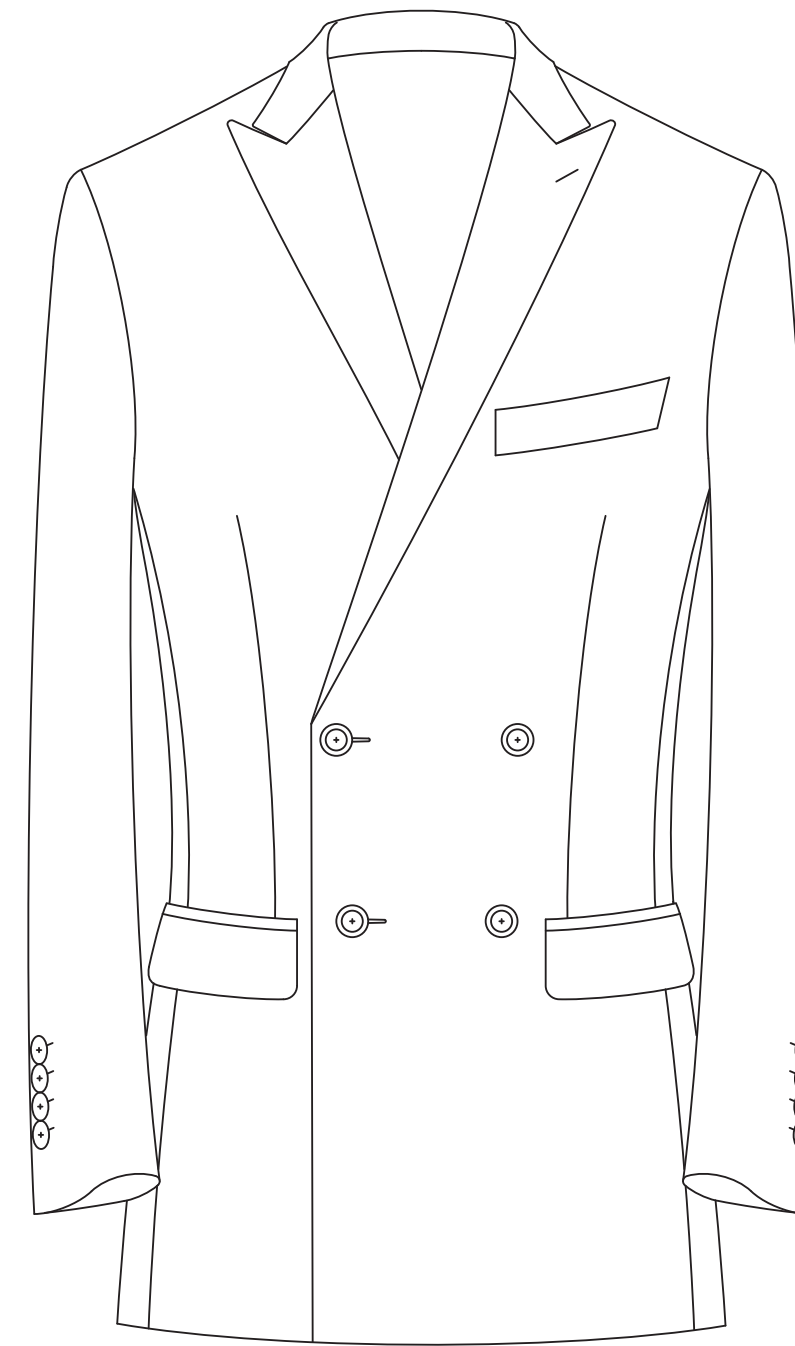
* Fashion Shawl lapel width: 3 1/2"

Four Button Double Breasted Models



Double Breasted 4x1

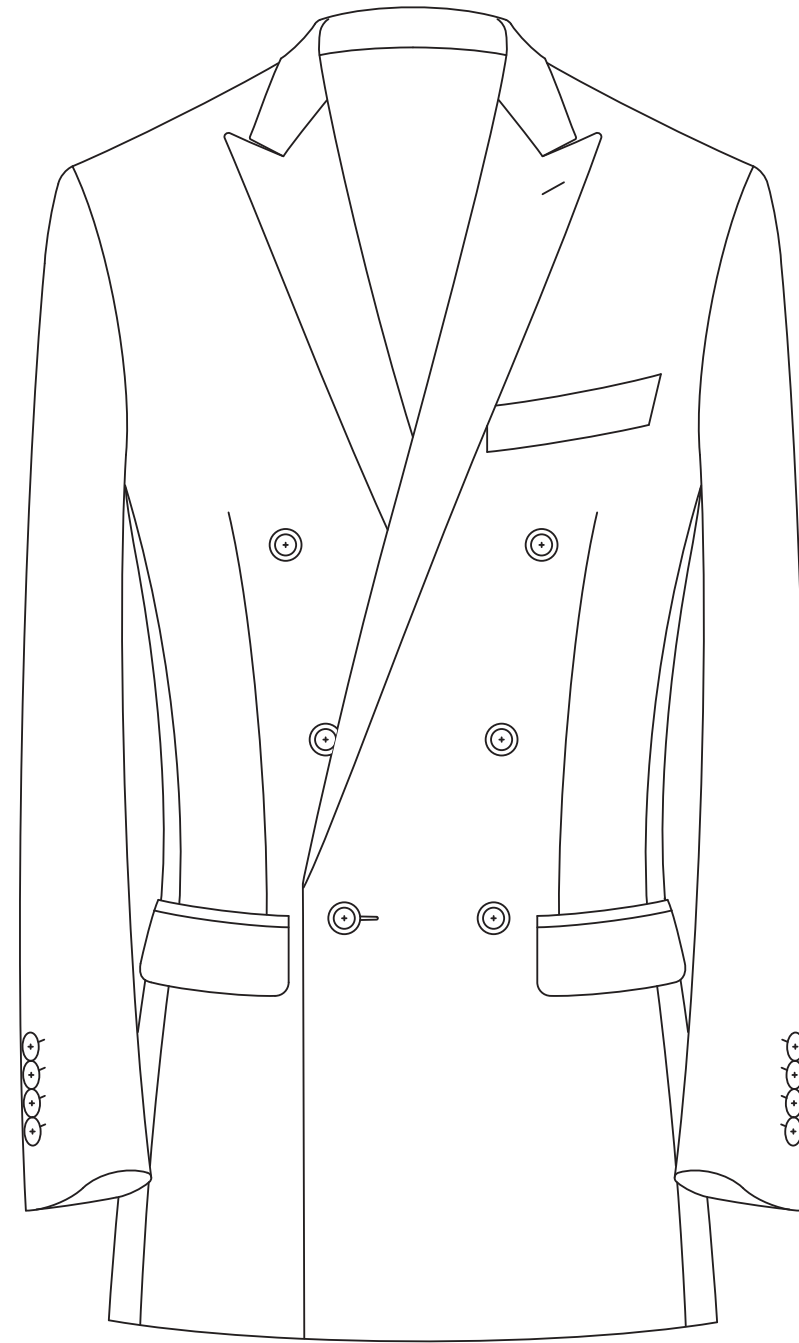
Four Buttons w/ One Buttonhole



Double Breasted 4x2

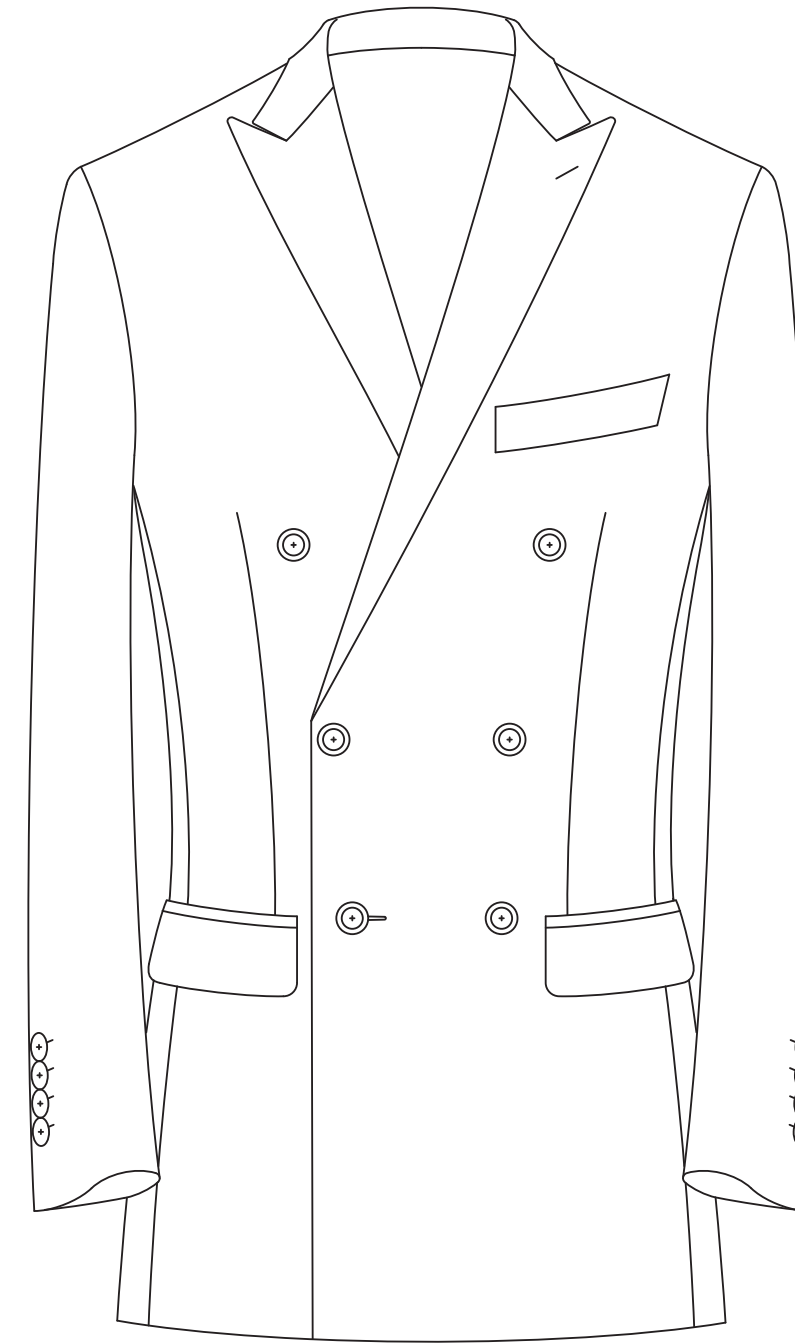
Four Buttons w/ Two Buttonholes

Six Button Double Breasted Models



Double Breasted 6x1

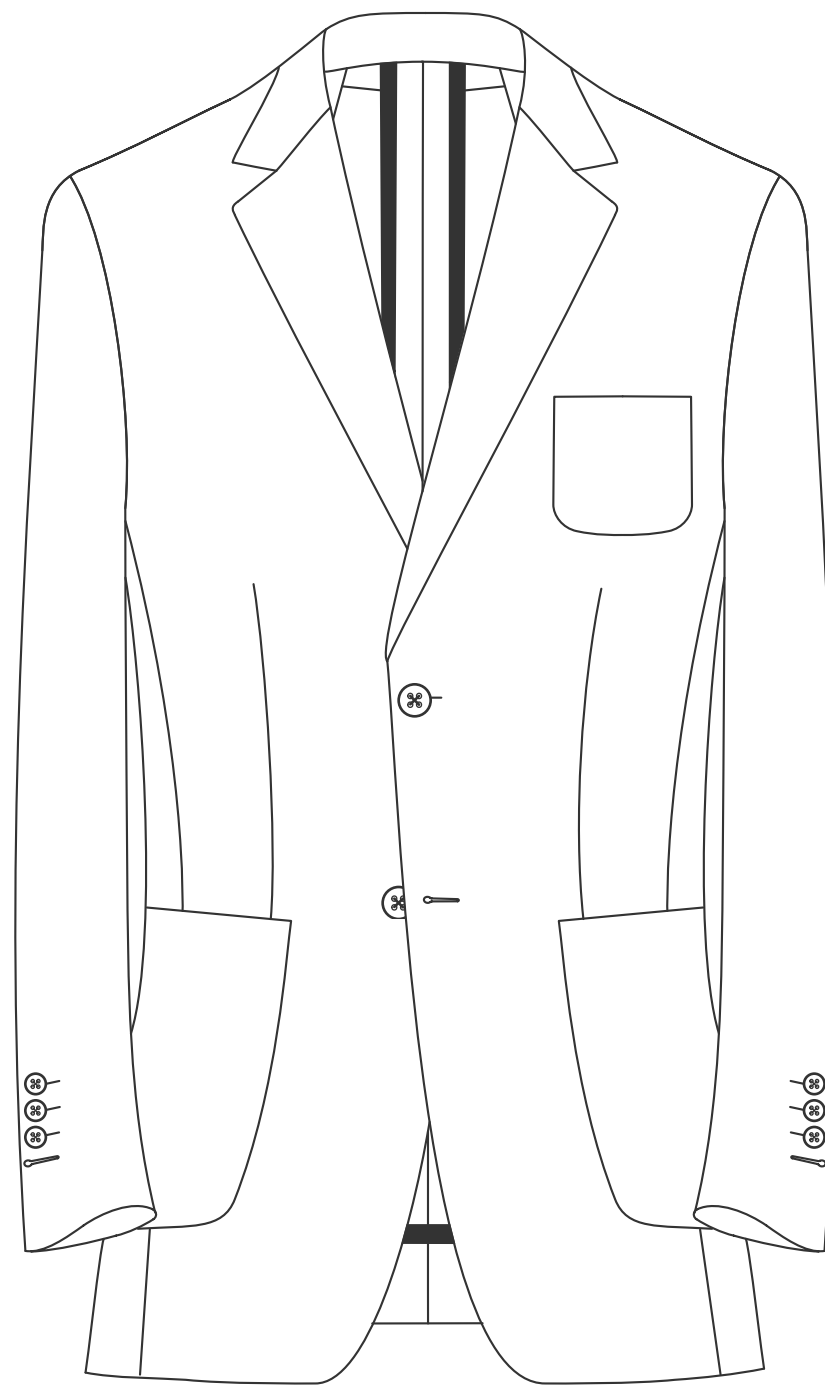
Six Buttons w/ One Buttonhole



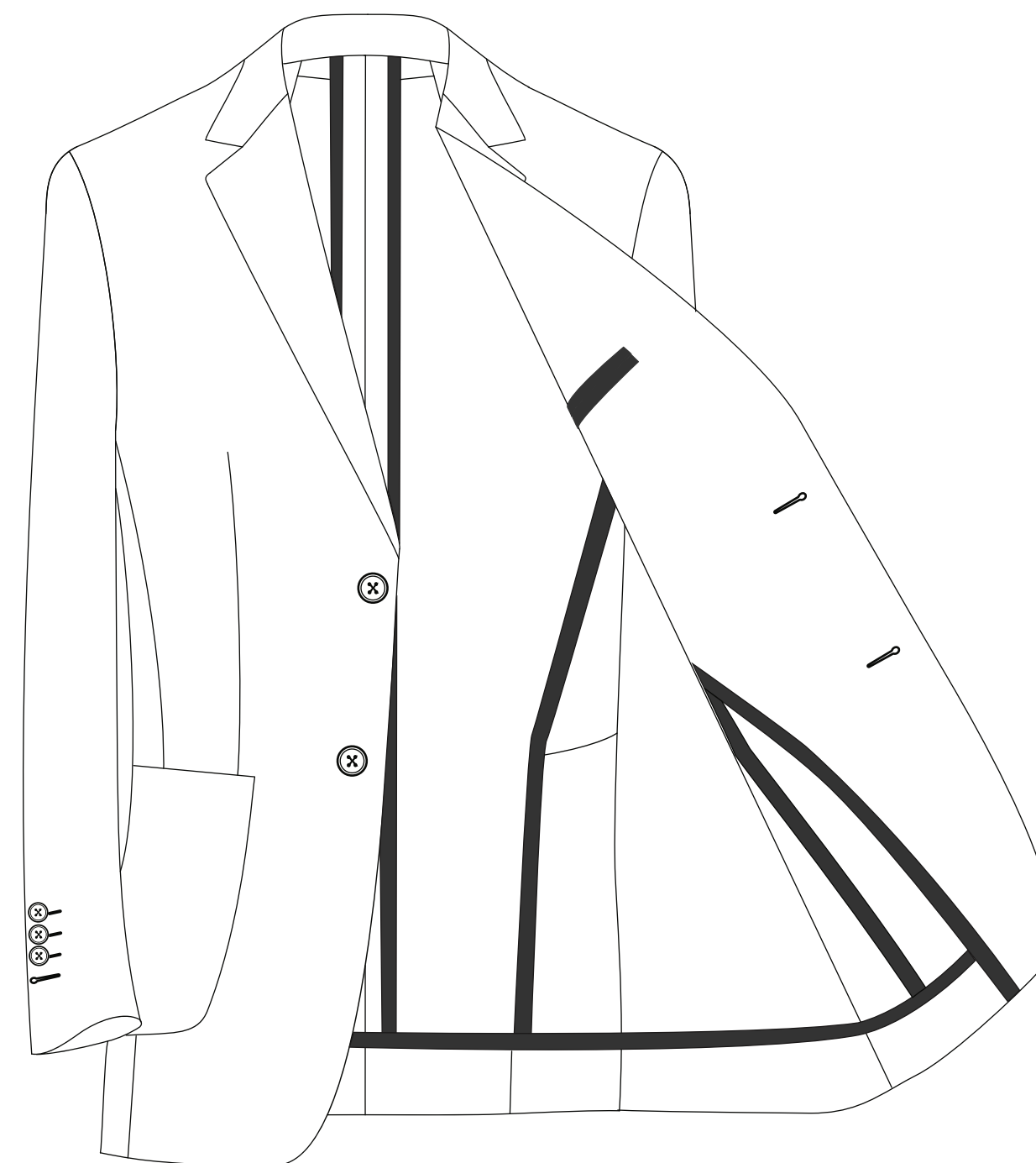
Double Breasted 6x2

Six Buttons w/ Two Buttonholes

Swacket (SWK)*

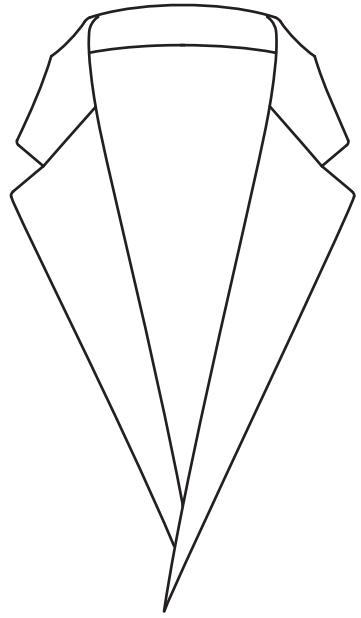


Sorrento

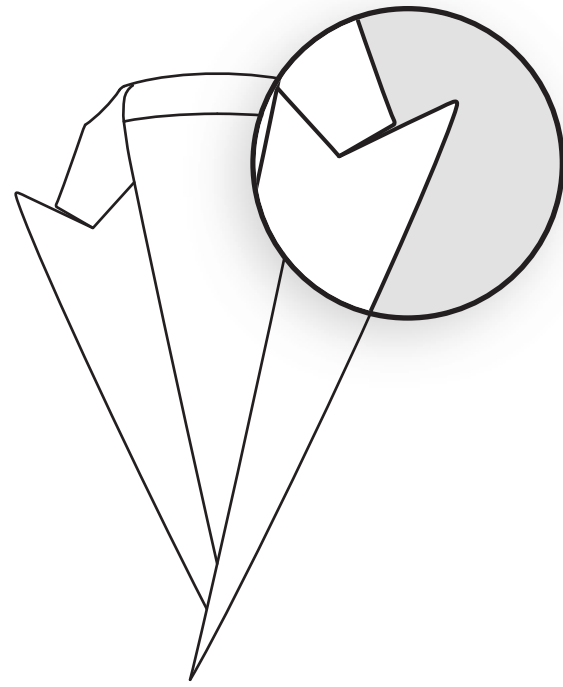


* Only available at iD factory

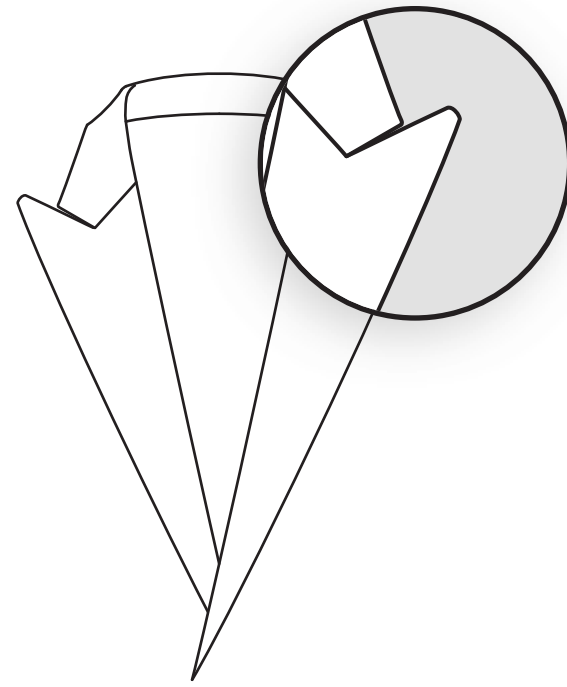
Lapels & Collars



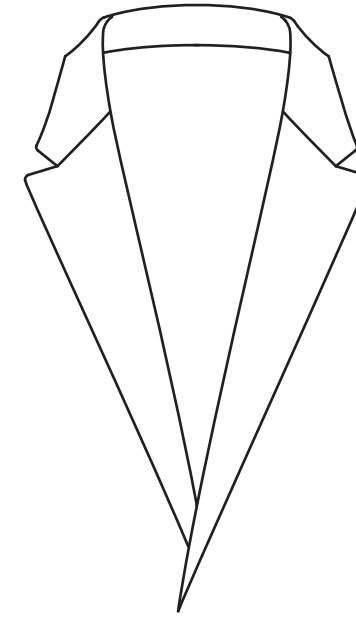
Notch



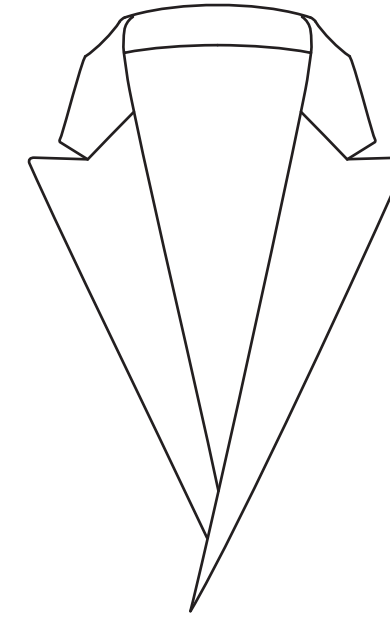
Sharp Peak



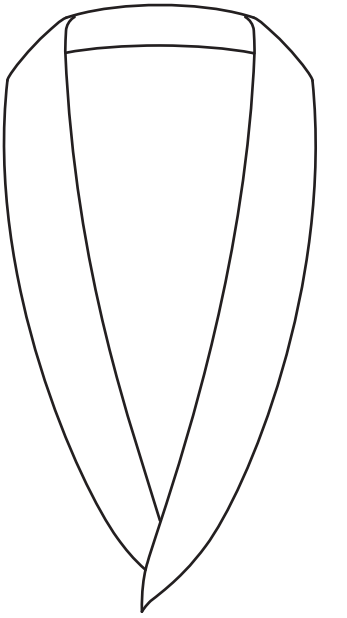
Peak



Semi-Notch



Semi-Peak

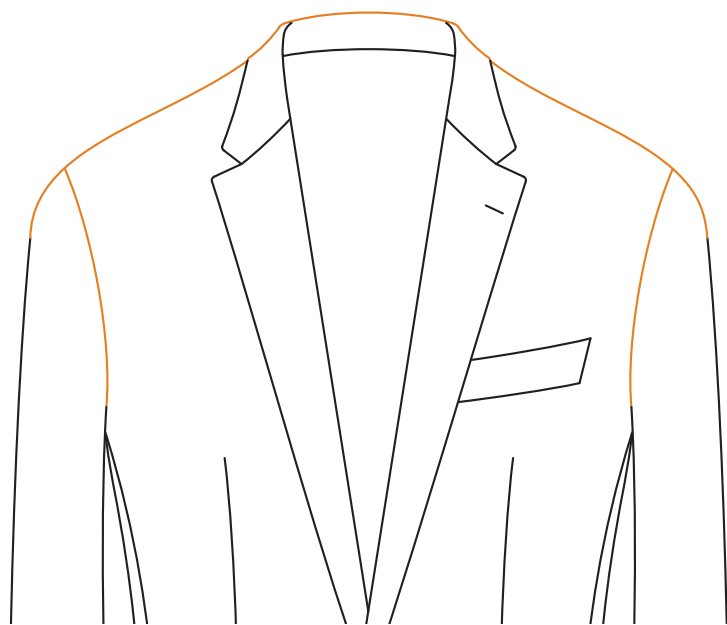


Shawl

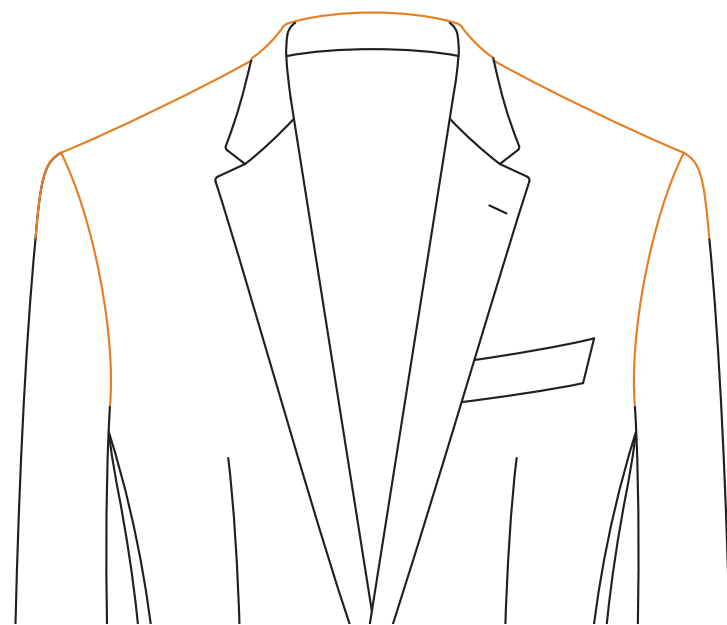
Lapel widths ($\frac{1}{8}$ " increments): 2" minimum - 4 $\frac{1}{2}$ " maximum

Shawl lapel widths: 2", 2 $\frac{1}{2}$ ", and 3"

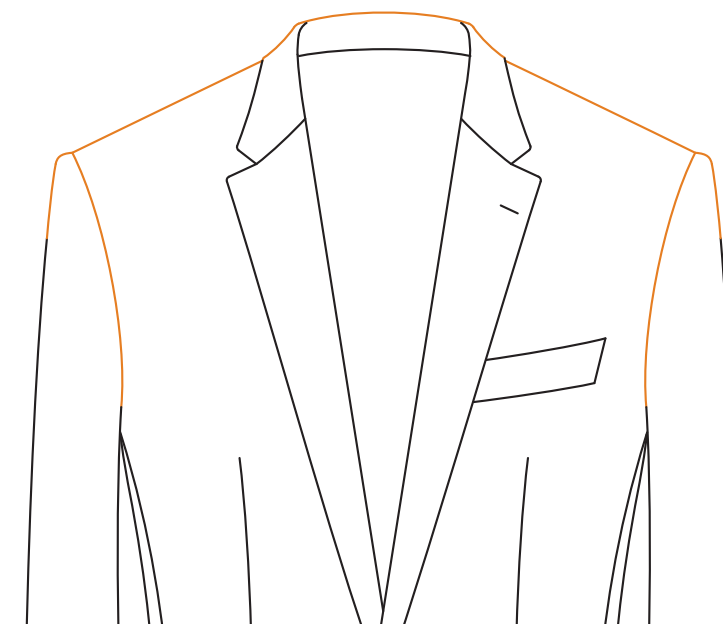
Shoulder Styles



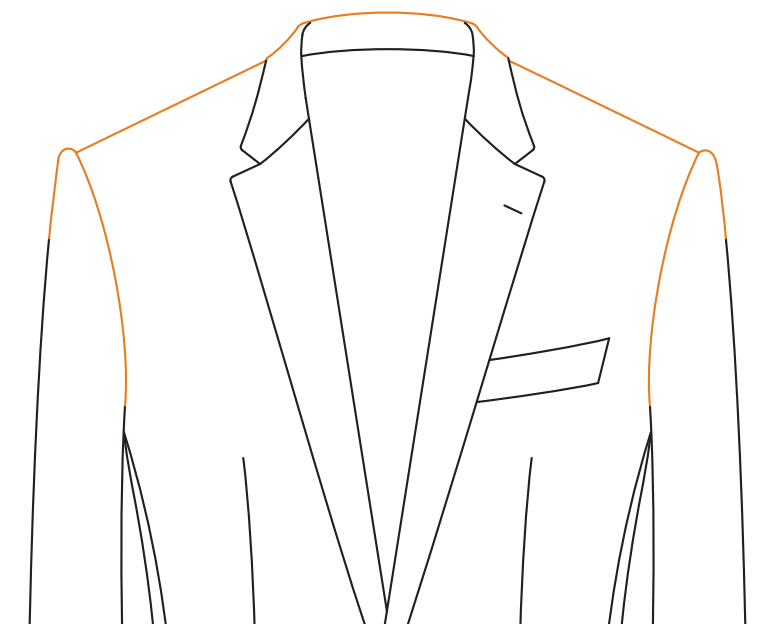
Ultra Soft



Natural

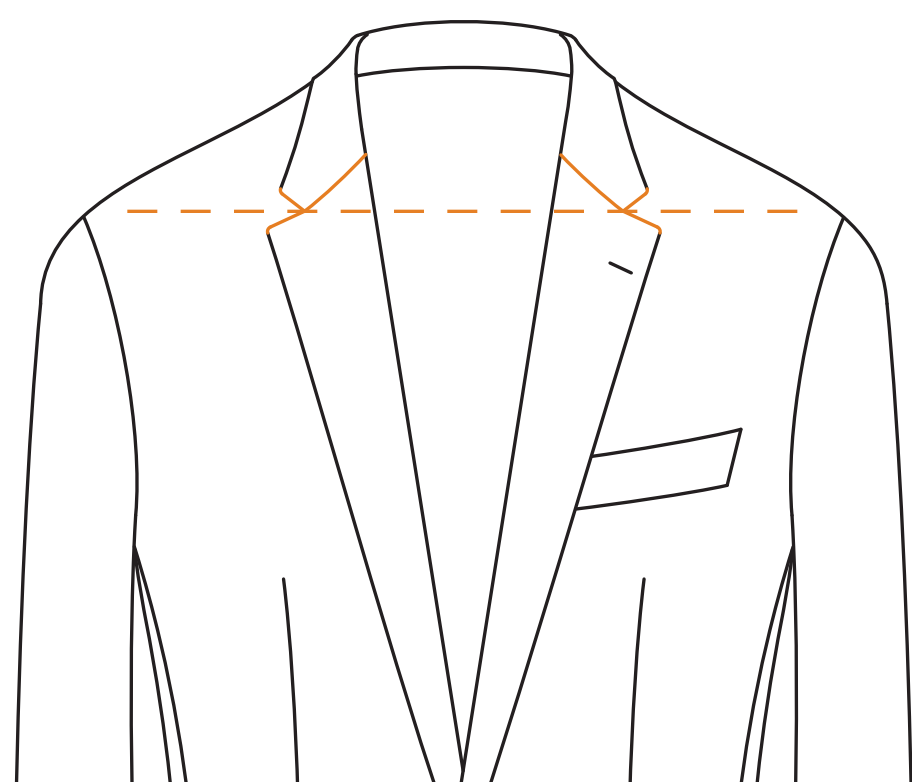


Capped

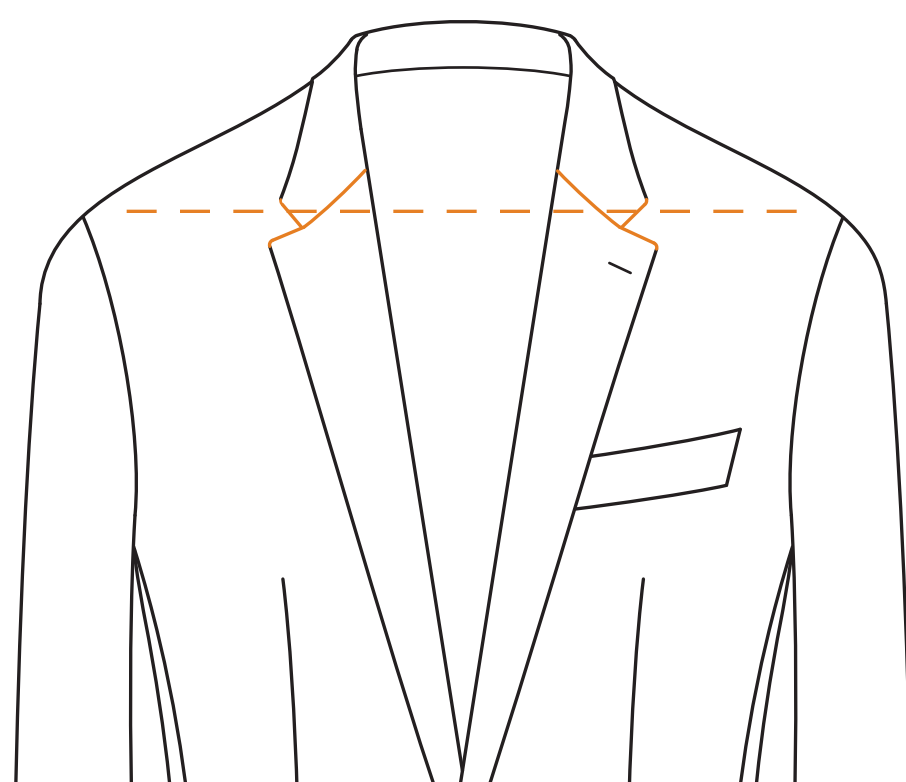


Roped

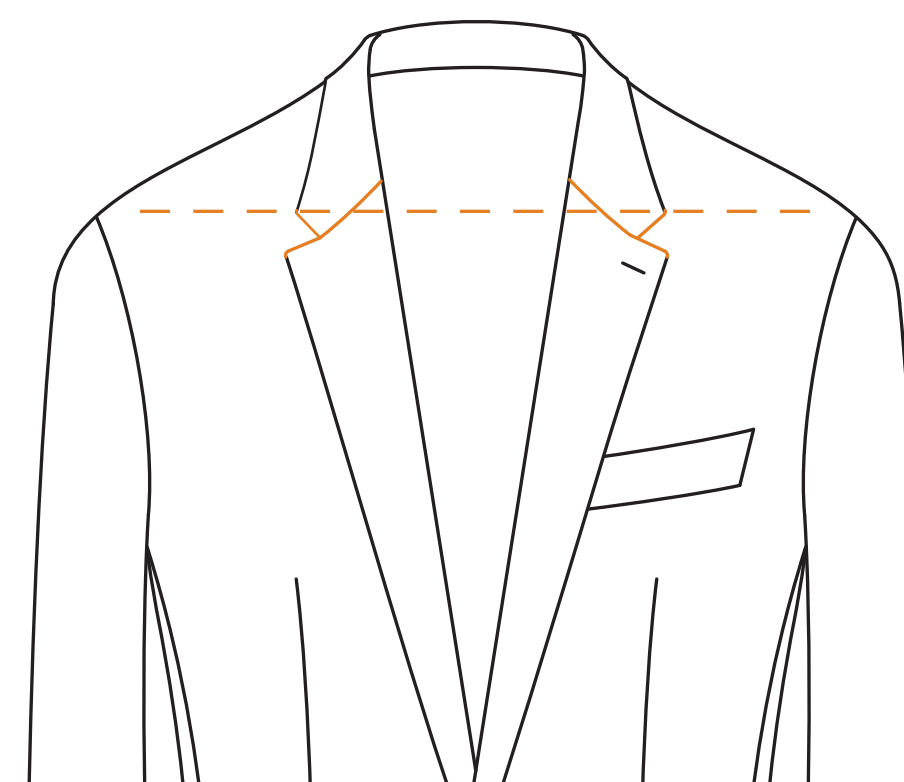
Gorge Styles



Standard



1/2"



3/4"

Milanese Buttonhole



ML01



ML02



ML03



ML04



ML05



ML06



ML07



ML08



ML09



ML10



1 Color



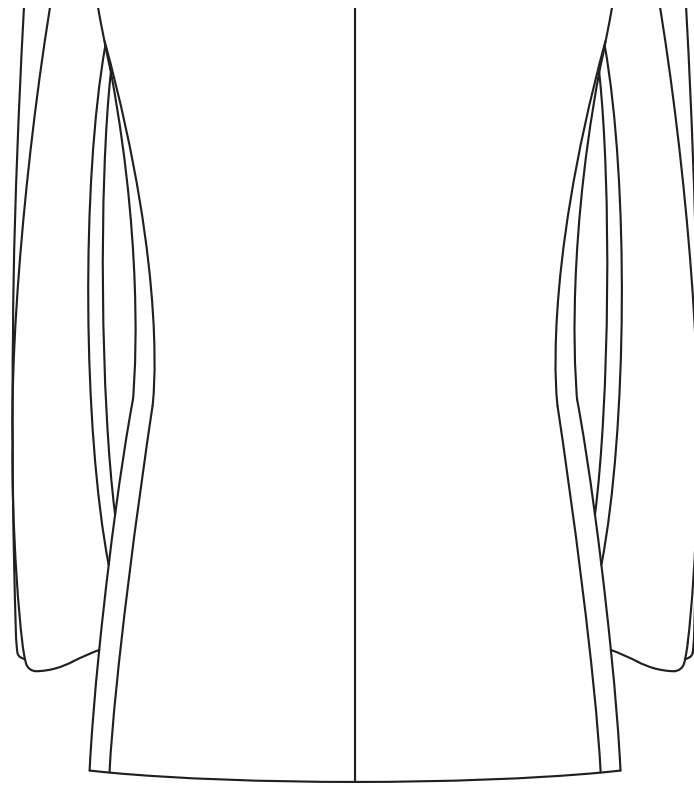
2 Colors



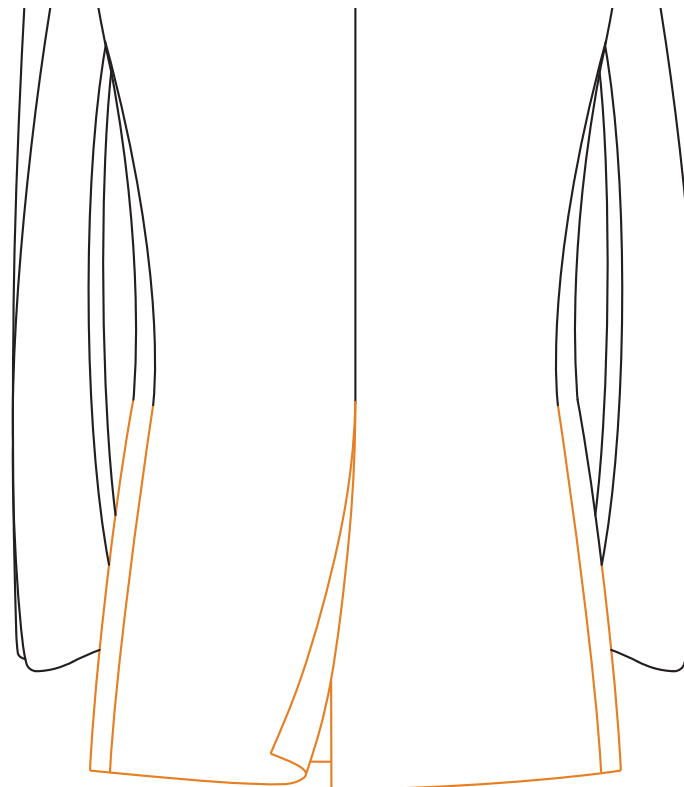
3 Colors

Select up to 3 colors

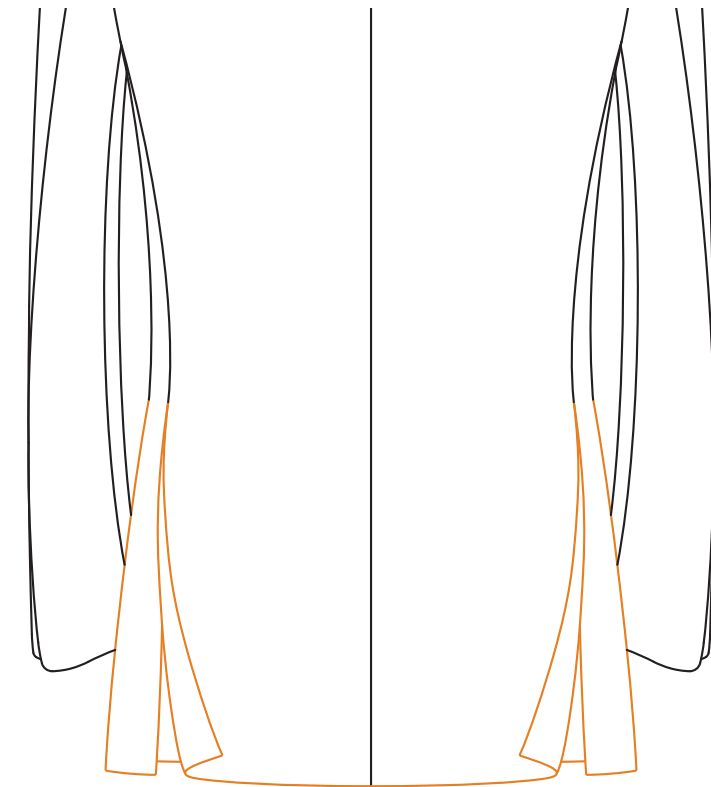
Vents



None



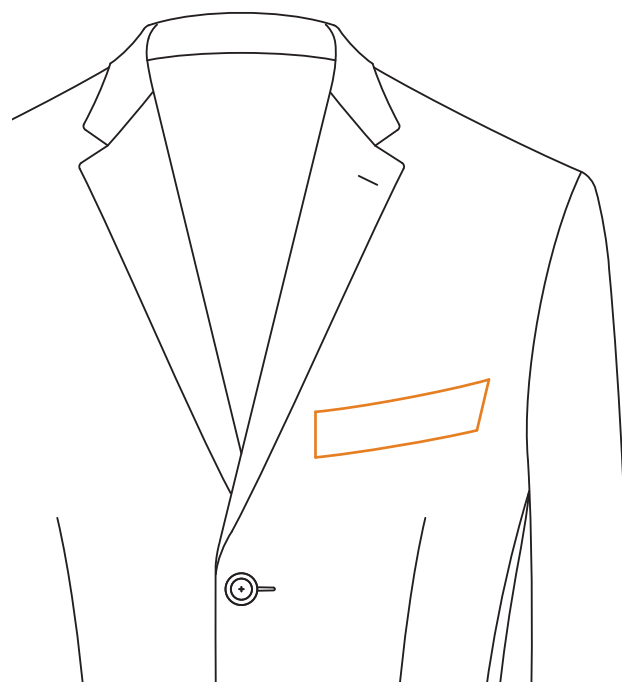
Center



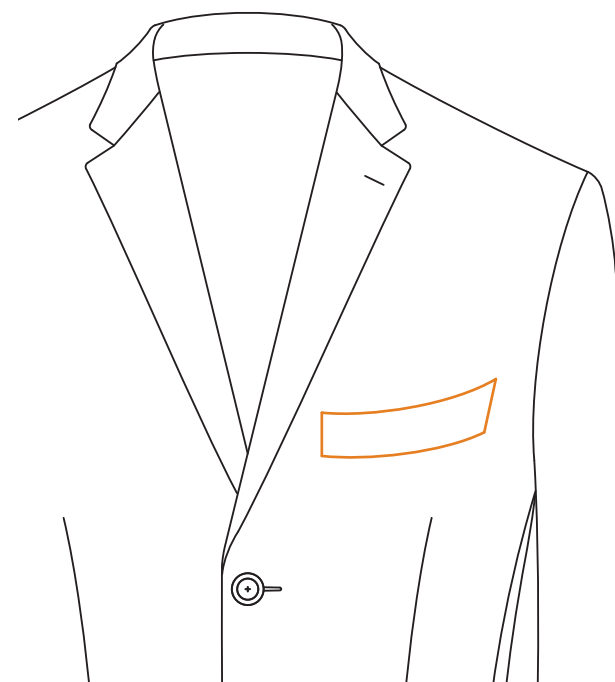
Double Side

Vent length adjustments: $\pm \frac{3}{4}$ ", $\pm 1 \frac{1}{2}$ "

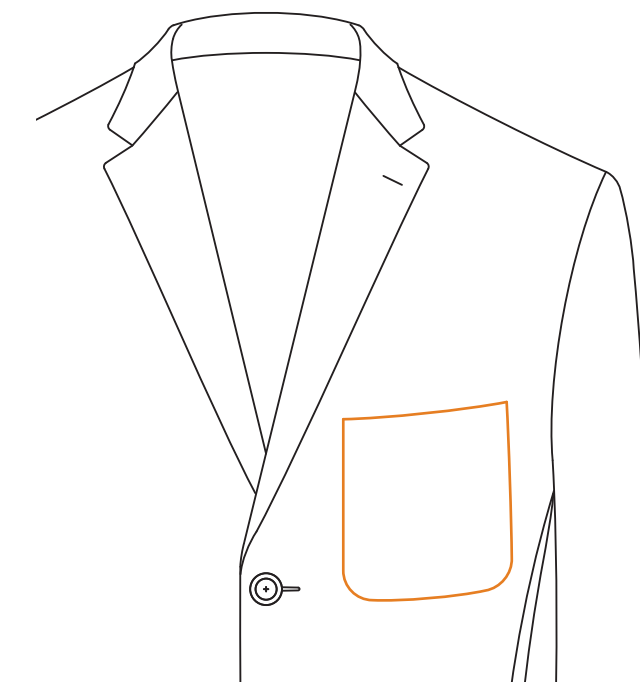
Breast Pocket



Welt

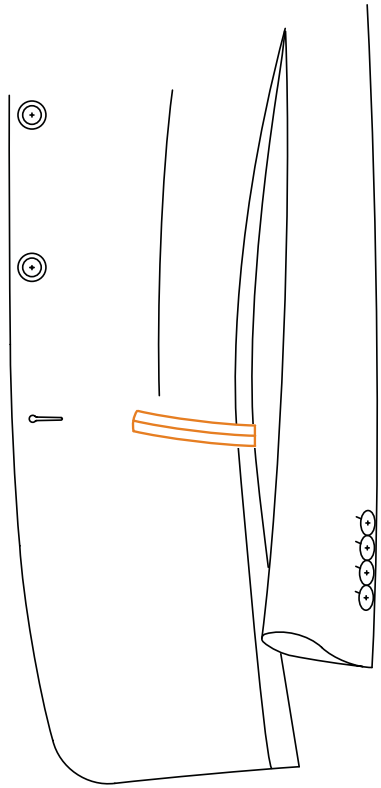


Curved Welt Square
Corners

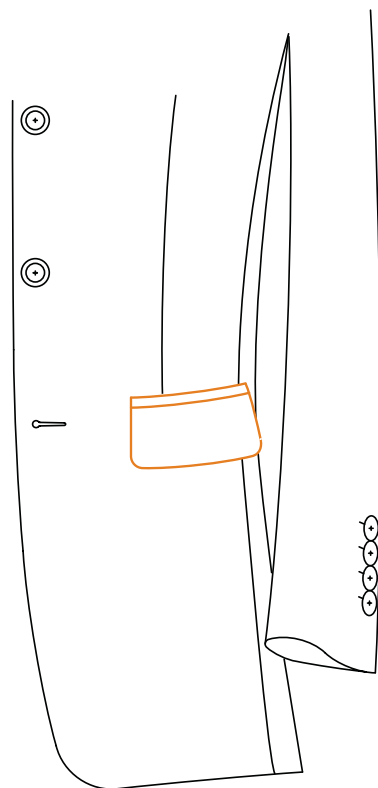


Patch

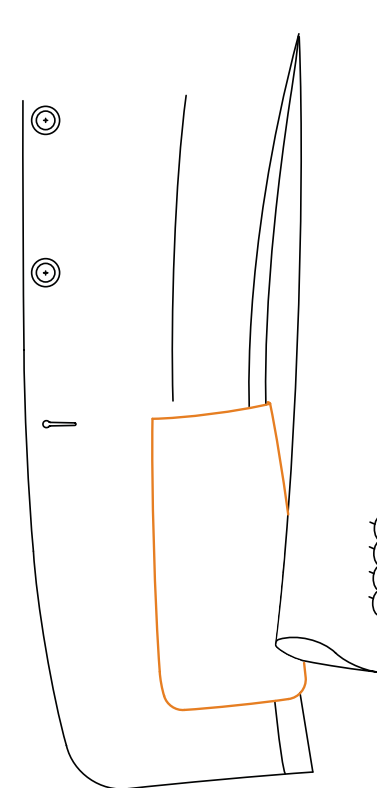
Exterior Lower Pockets



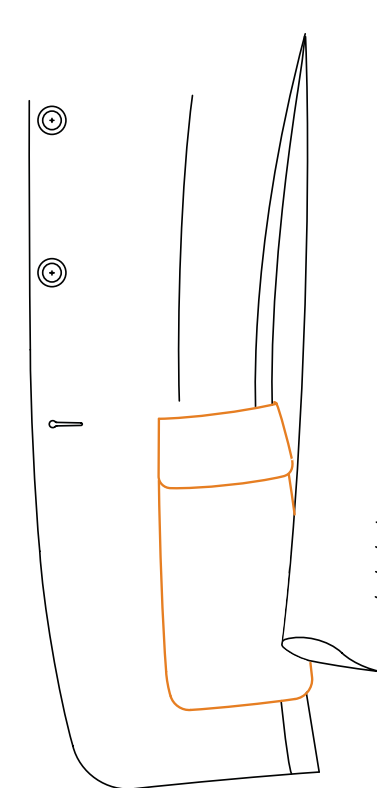
Double Besom



Double Besom with Flap

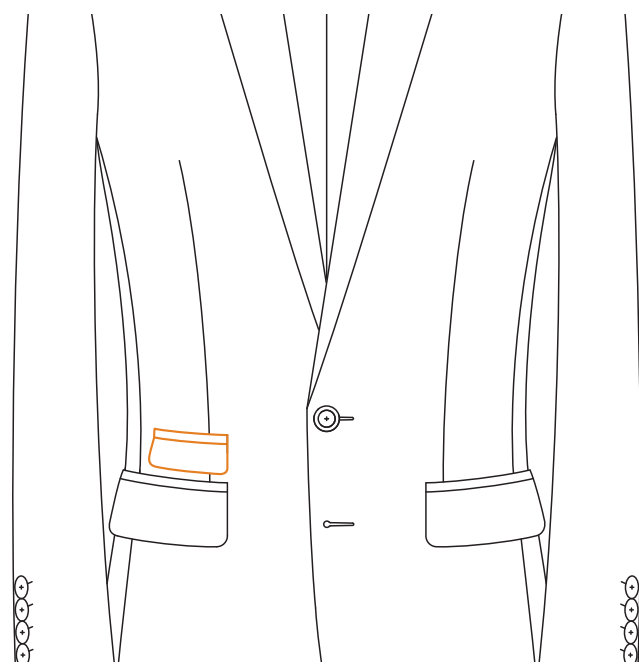


Patch

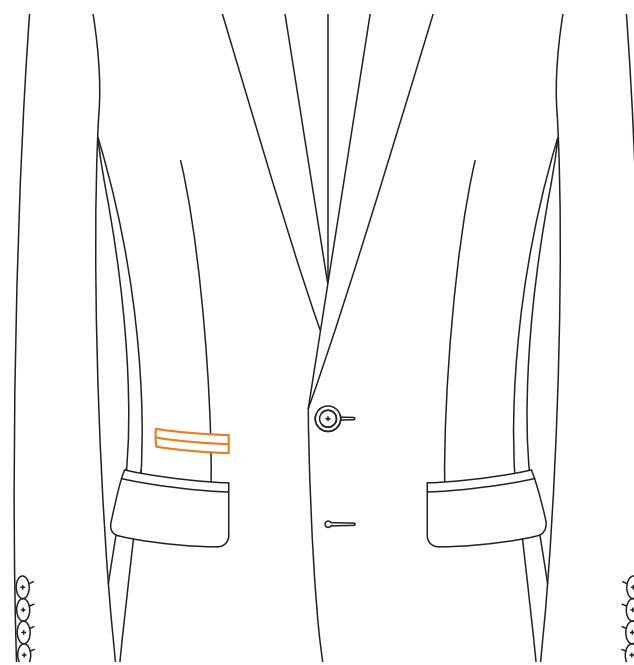


Patch with Flap

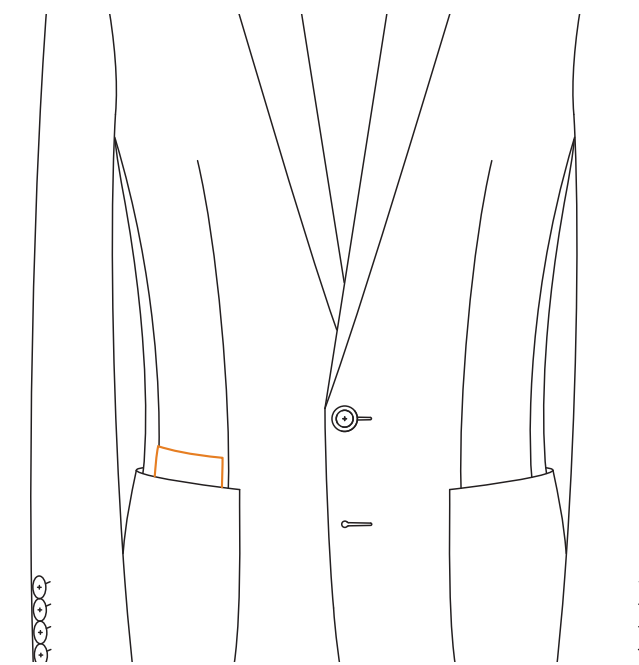
Ticket Pockets



Double Besom with Flap

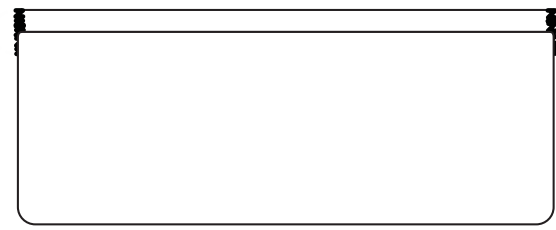


Double Besom

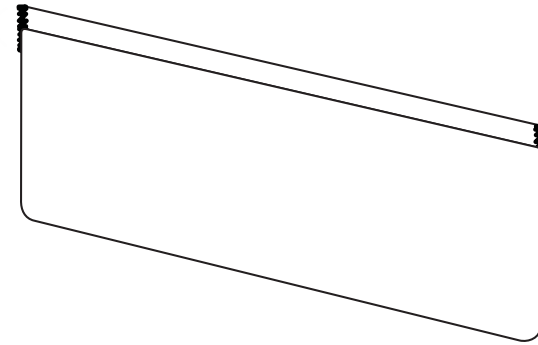


Patch with Half Hidden in
Lower Pocket

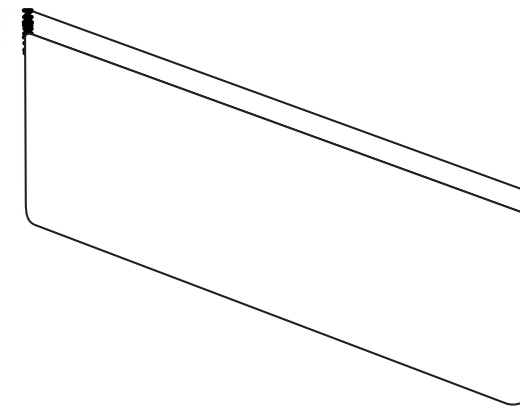
Pocket Angles



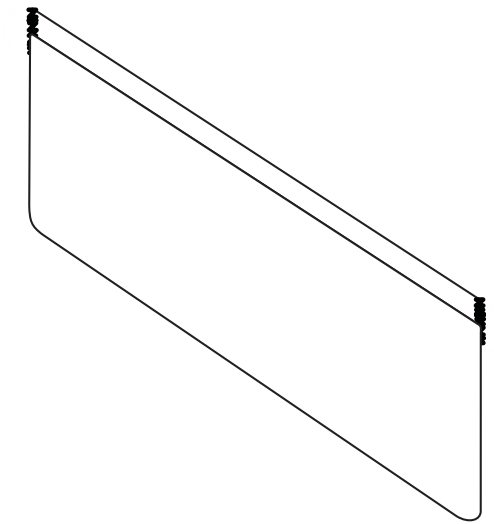
Straight 90°



Small Slant 13°



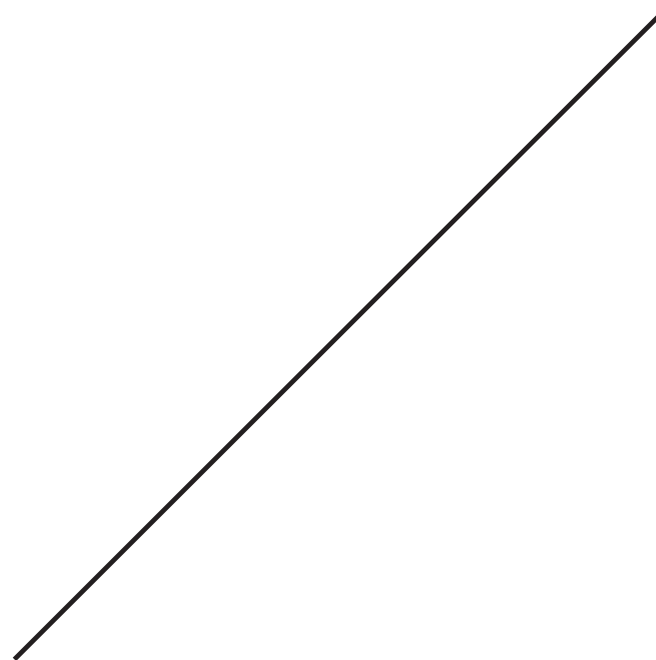
Mid Slant 20°



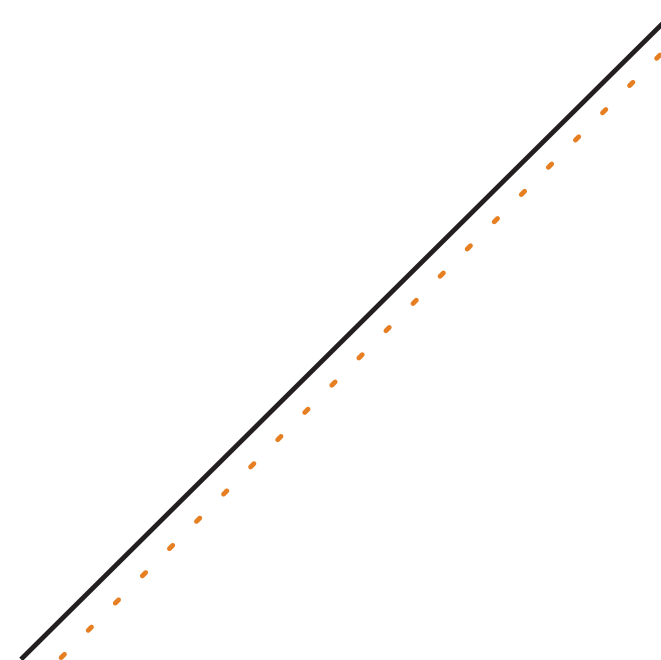
Large Slant 33°

Slanted Pocket: 13° is standard if slanted is selected. Images represent the left jacket pocket

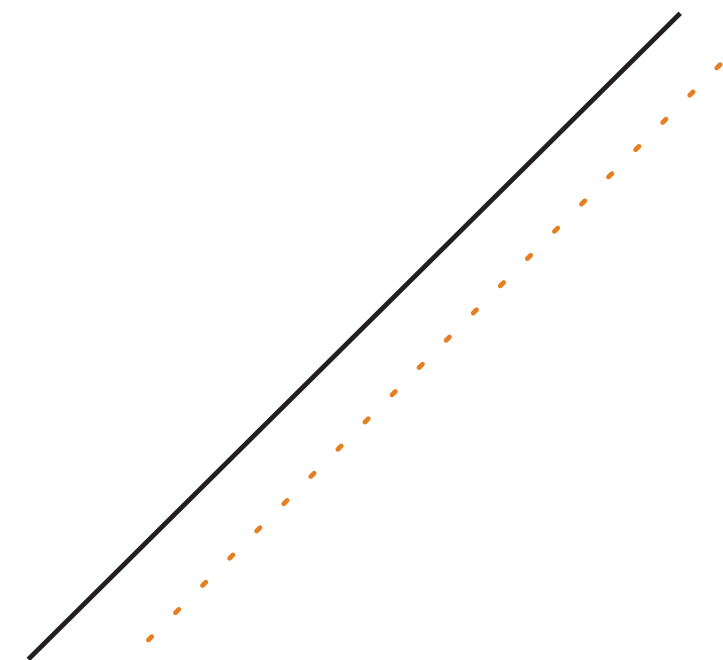
Pic Stitching



Hidden



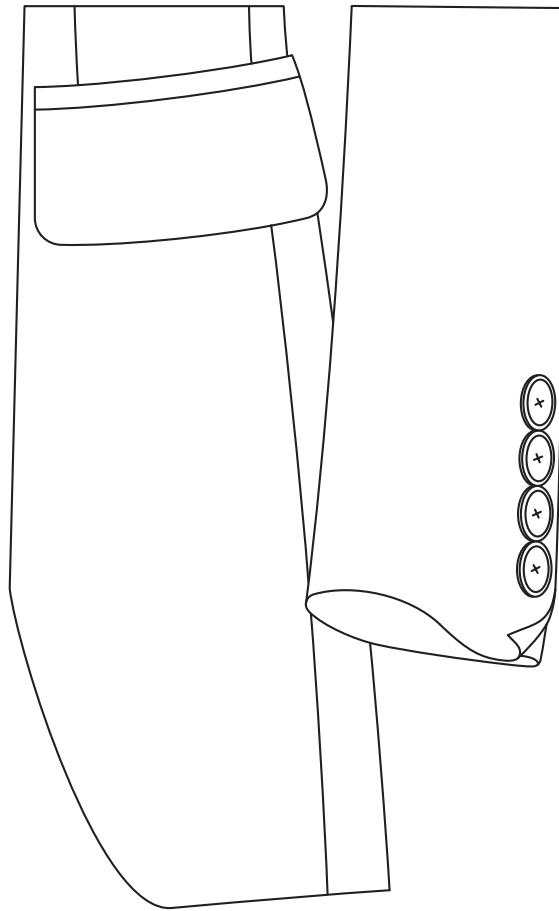
Edge Pic



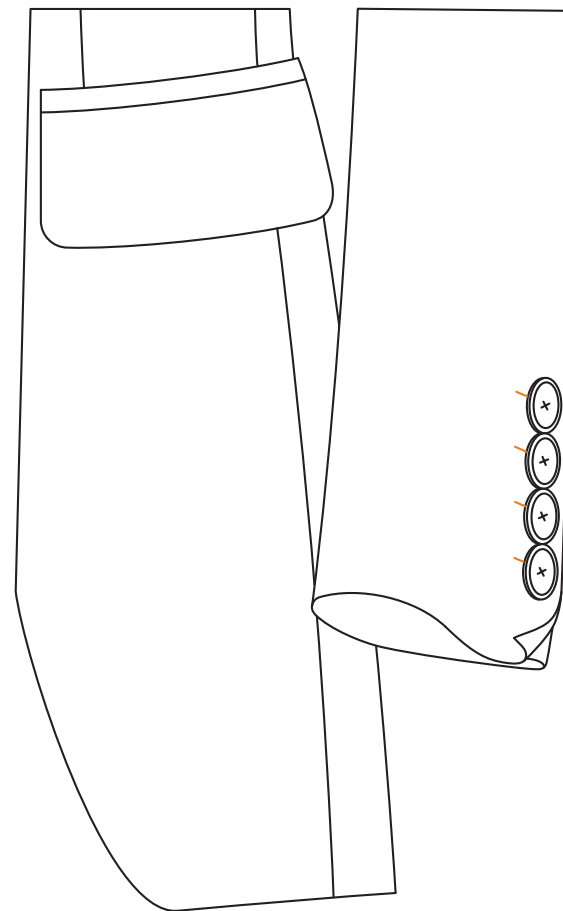
¼" Pic

Available: Collar/Lapels/Front, Pocket Flap, Exterior Breast Pocket, Shoulder, Dart, Armhole Front, Armhole Back, Vent, Sleeve Vent, Center Back, Side Back, Sleeve Back.

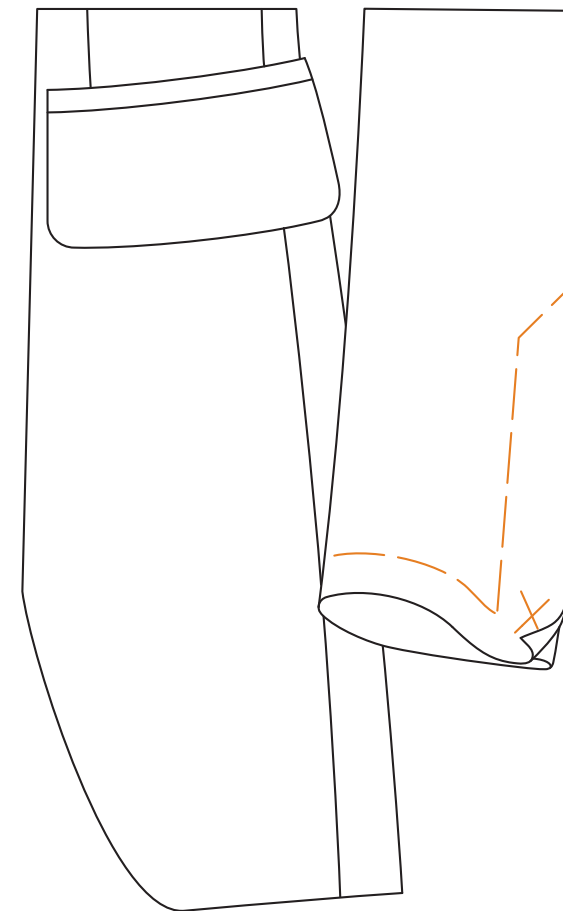
Sleeve Buttonholes



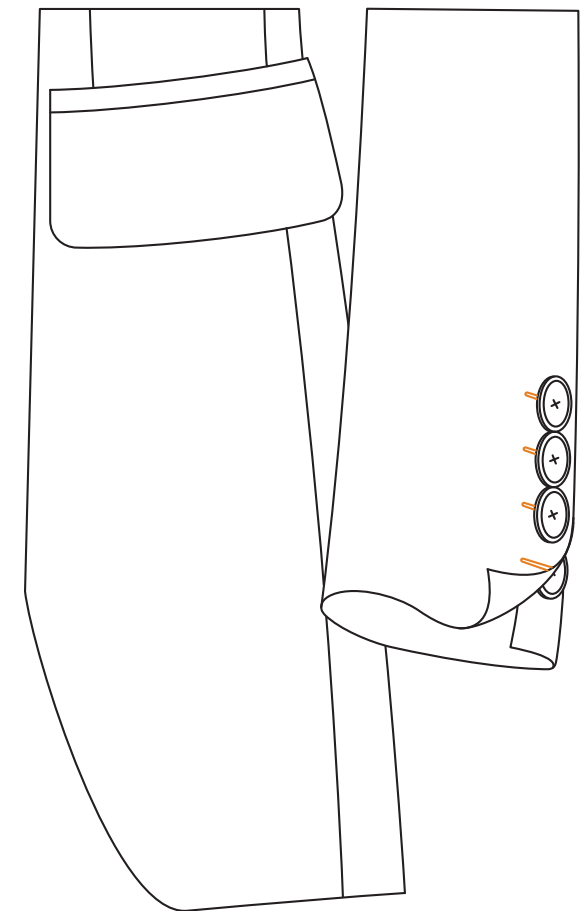
None



Imitation*



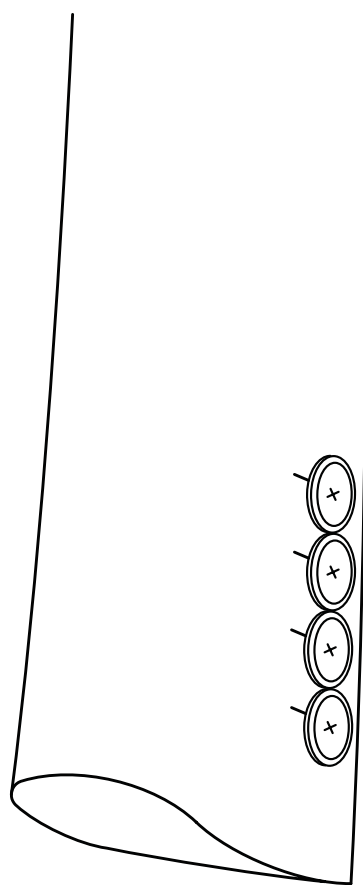
Prepared for Functional



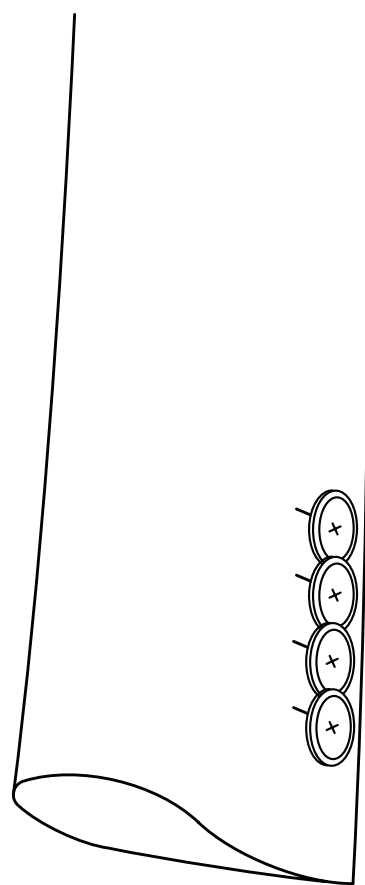
Functional*

Buttonhole Spacing

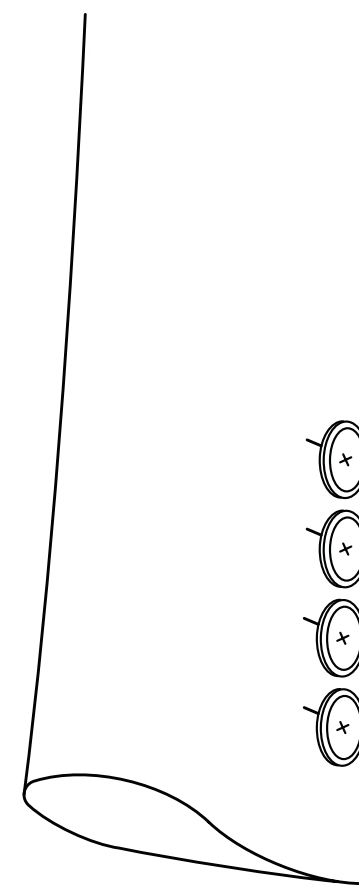
* 45° Buttonhole stitching is available on imitation and functional buttonholes.



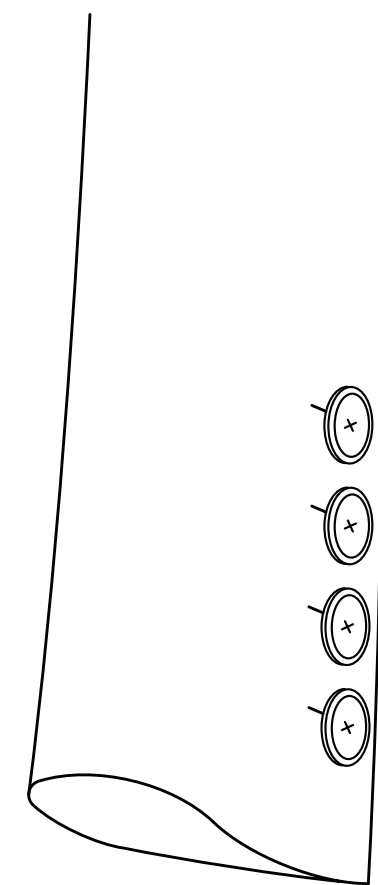
Kissing



Stacked

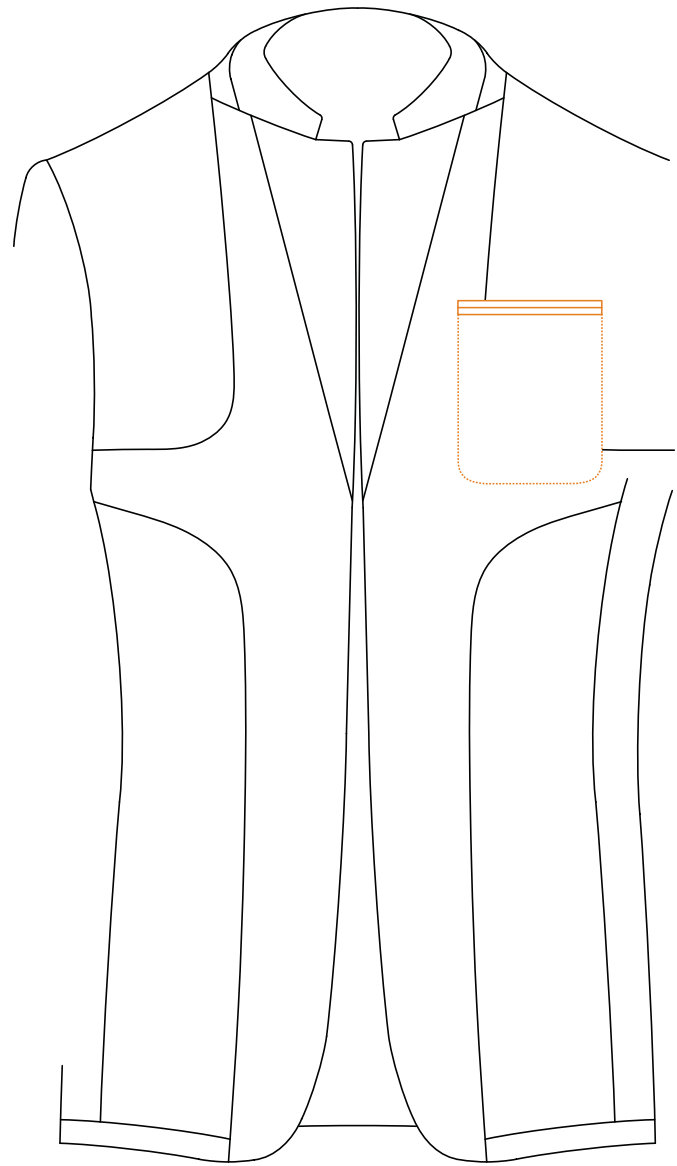


$\frac{1}{8}$ " Spacing

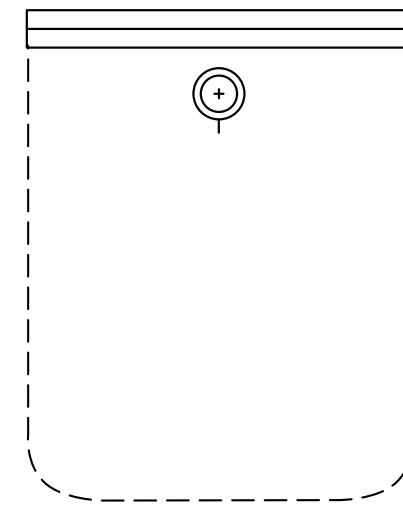


$\frac{1}{4}$ " Spacing

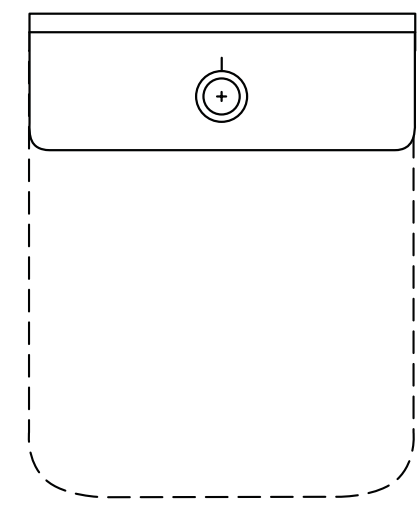
Interior Breast Pockets



Double Besom

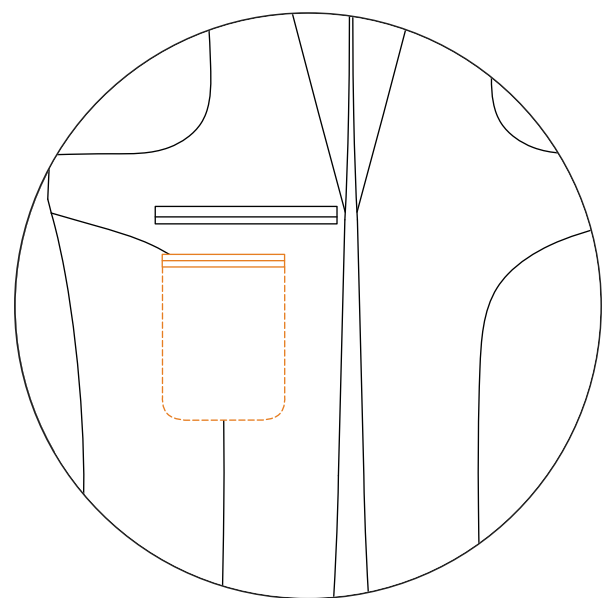


Double Besom with Button
Through

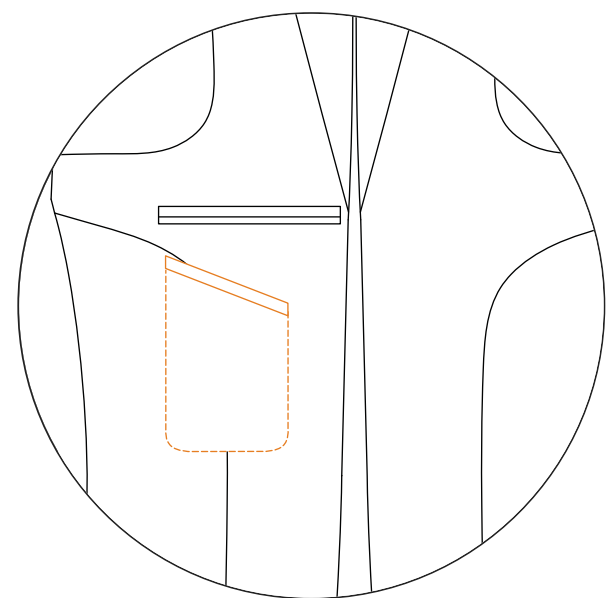


Double Besom with Square
Flap & Button

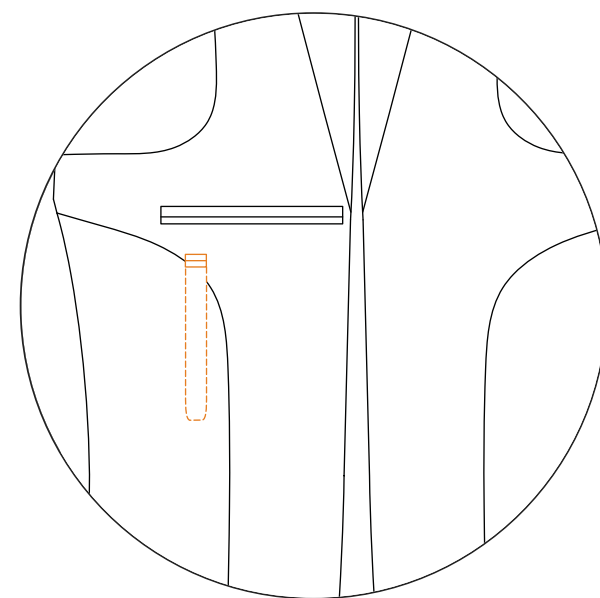
Additional Pockets



Phone



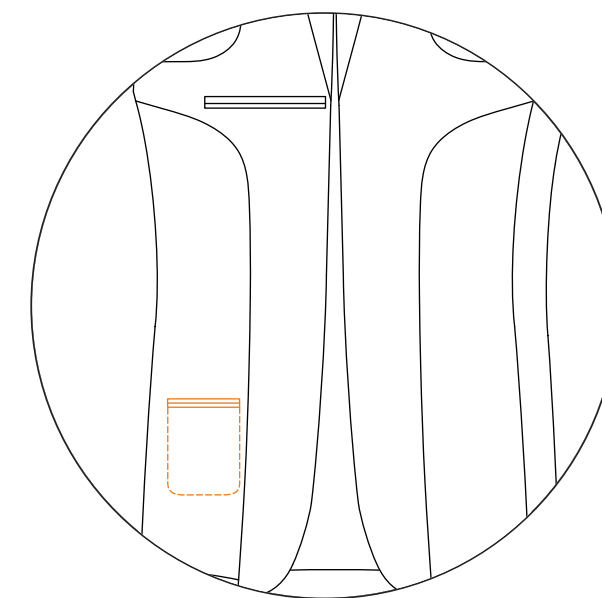
Slanted Phone



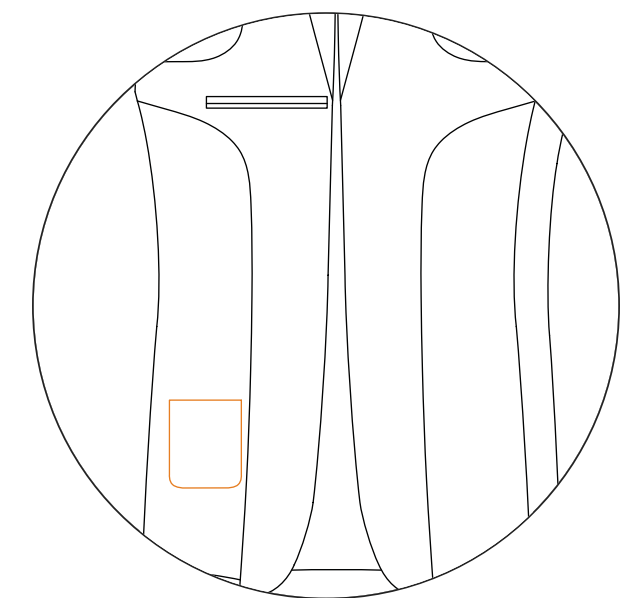
Pen

Available for Left, Right, or Both

Lower Interior Pockets



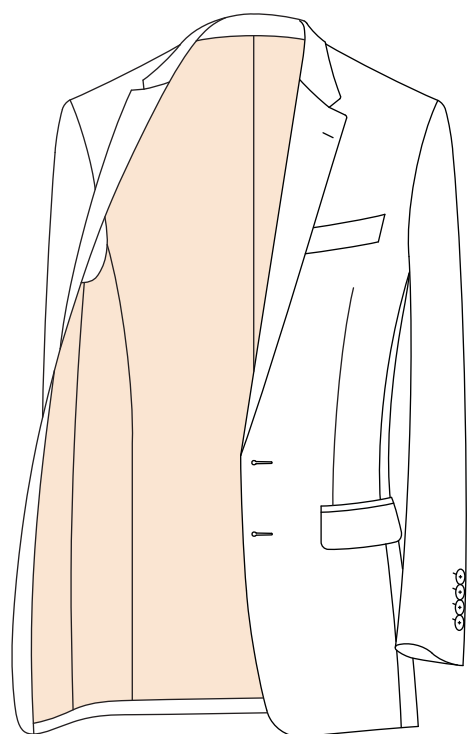
Lower Card Double
Besom



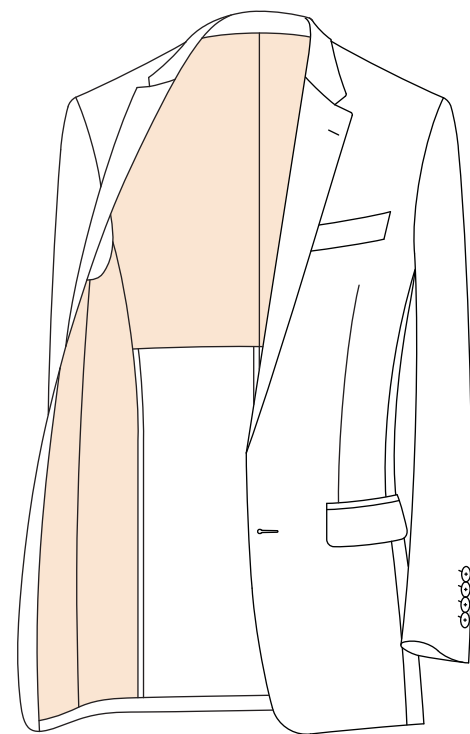
Lower Card Patch

Available for Left or Right

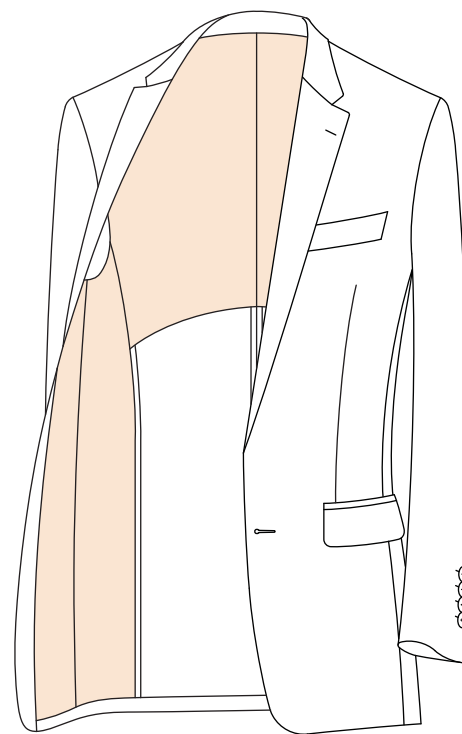
Lining Placement



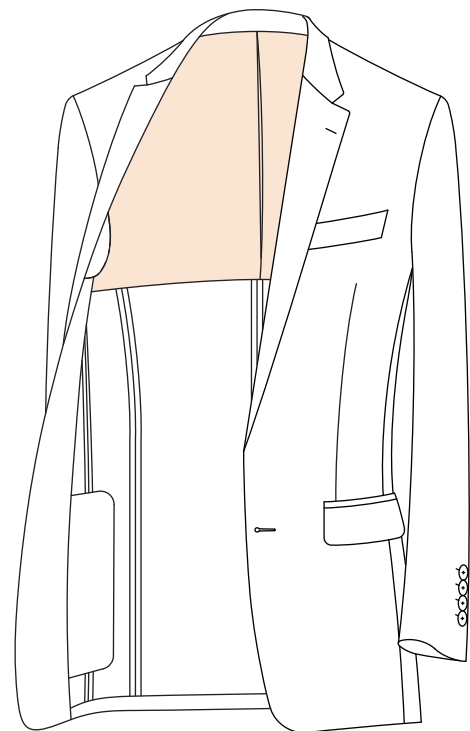
Full



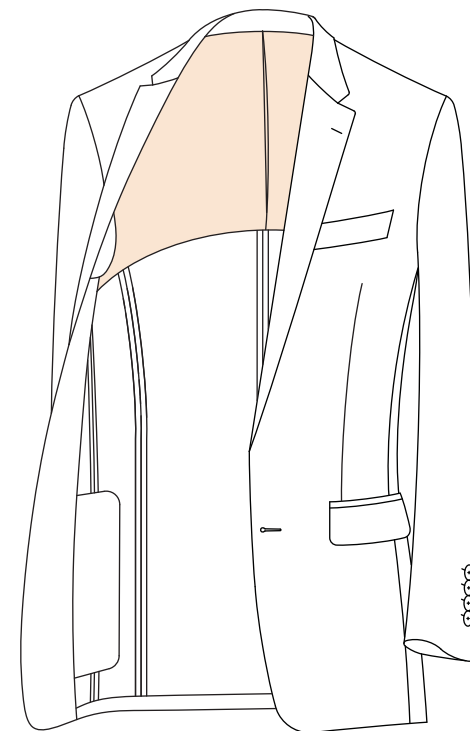
1/2 Flat



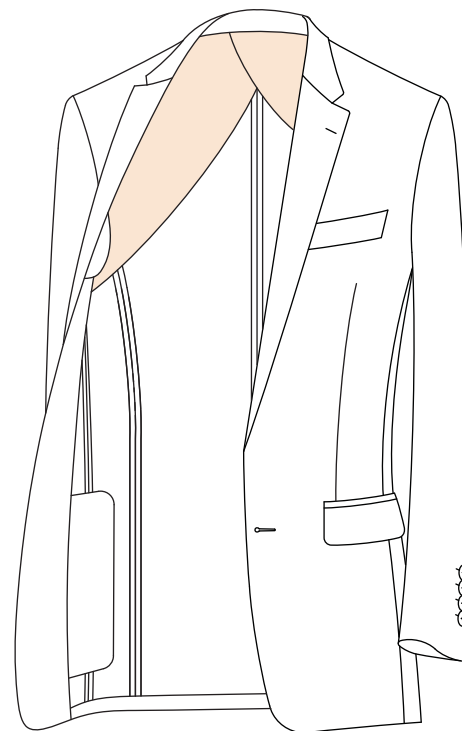
1/2 Arched



1/3 Flat

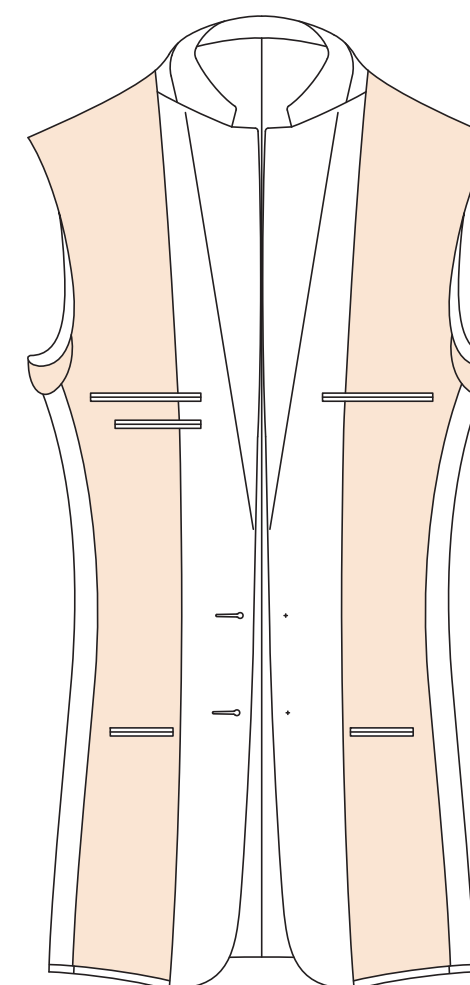


1/3 Arched

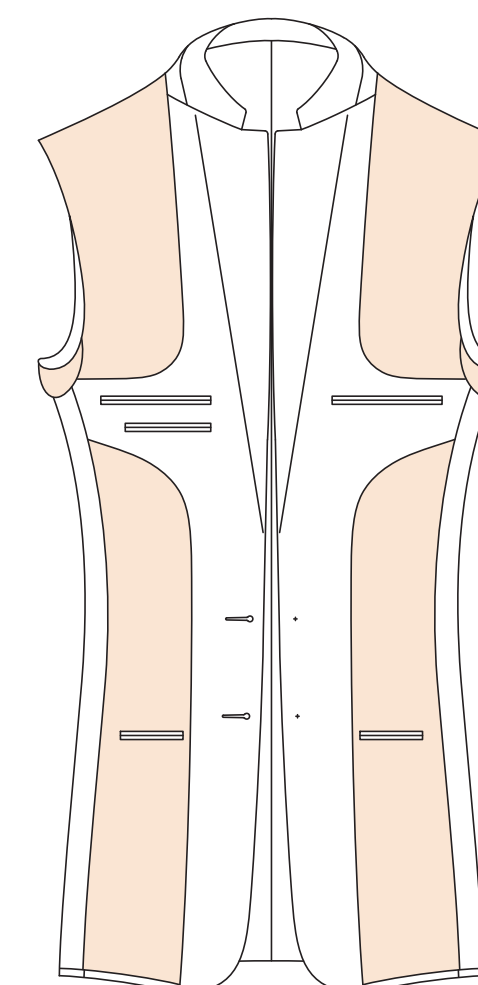


1/4

Interior Shape



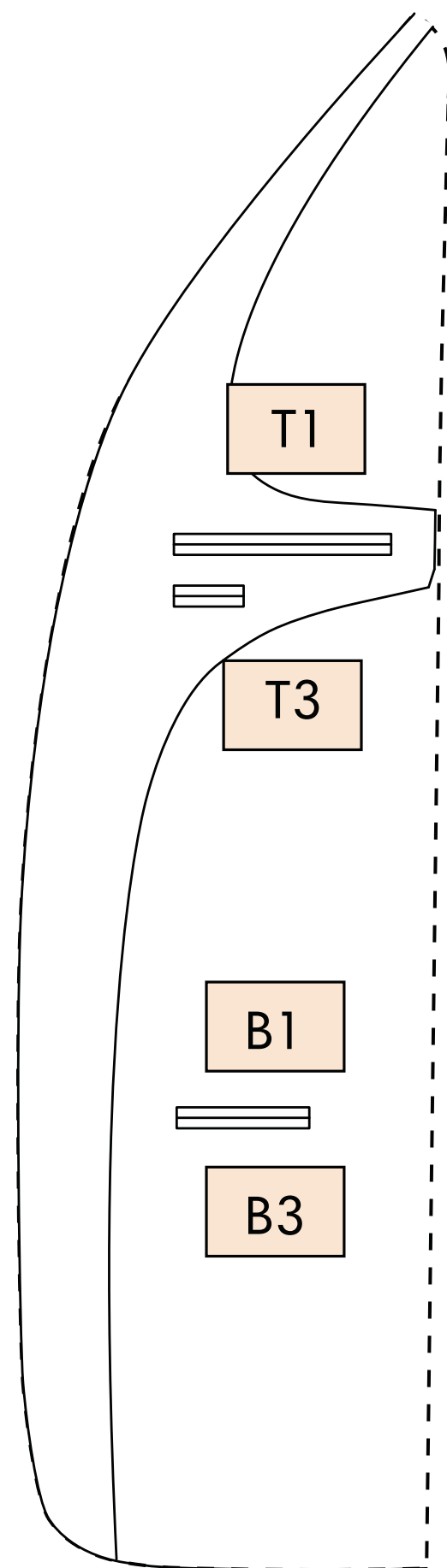
Classic Parallel



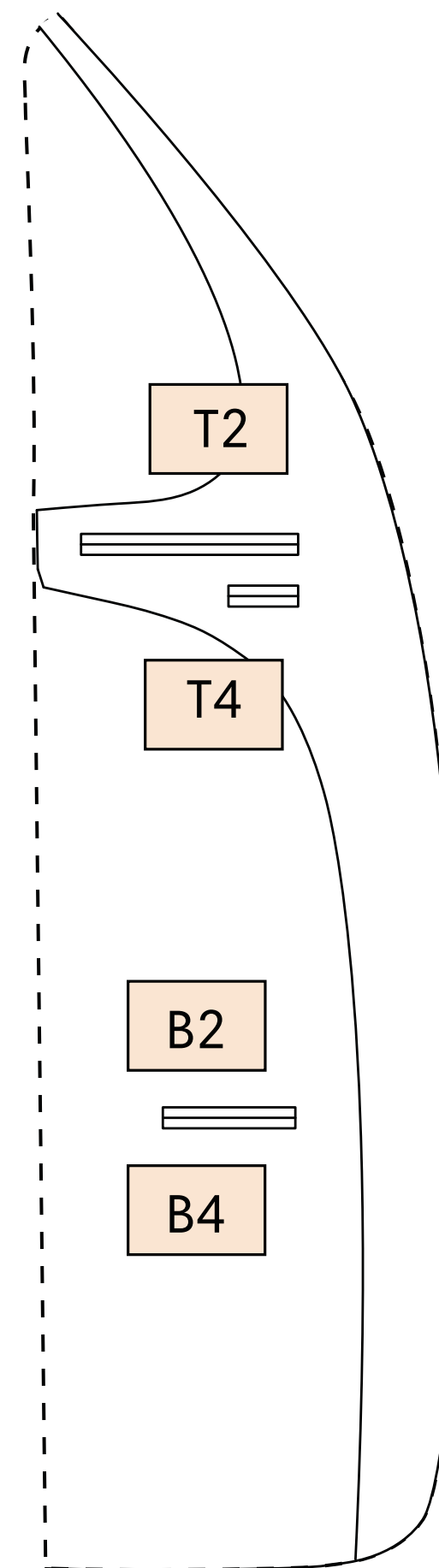
**Curved French Facing
One Piece**

* 1/3 and 1/4 lined options ONLY available for Tuscany tailoring grade

Name Label Locations



Right Side Open
Interior



Left Side Open
Interior

T1 - Right Above Breast Pocket

T2 - Left Above Breast Pocket

T3 - Right Below Breast Pocket

T4 - Left Below Breast Pocket

B1 - Right Above Card Pocket

B2 - Left Above Card Pocket

B3 - Right Below Card Pocket

B4 - Left Below Card Pocket

Monogram Fonts

Caligraphy

ABCDEFGHIJKLMNOPQRSTUVWXYZ
 abcdefghijklmnopqrstuvwxyz
 1234567890?!@*~;\$%()+

Times Roman

ABCDEFGHIJKLMNOPQRSTUVWXYZ
 abcdefghijklmnopqrstuvwxyz
 1234567890?!@*~;\$%()+

Block

ABCDEFGHIJKLMNOPQRSTUVWXYZ
 abcdefghijklmnopqrstuvwxyz
 1234567890?!@*~;\$%()+

Script

ABCDEFGHIJKLMNOPQRSTUVWXYZ
 abcdefghijklmnopqrstuvwxyz
 1234567890?!@*~;\$%()+

Copper Plate

Only CAPITAL letters

ABCDEFGHIJKLMNOPQRSTUVWXYZ
 1234567890?!@*~;\$%()+

Rockwell

ABCDEFGHIJKLMNOPQRSTUVWXYZ
 abcdefghijklmnopqrstuvwxyz
 1234567890?!@*~;\$%()+

Bradley

ABCDEFGHIJKLMNOPQRSTUVWXYZ
 abcdefghijklmnopqrstuvwxyz
 1234567890?!@*~;\$%()+

Jazz

Lowercase letters are CAPITALIZED

ABCDEFGHIJKLMNOPQRSTUVWXYZ
 abcdefghijklmnopqrstuvwxyz
 1234567890?!@*~;\$%()+

Dom Casual

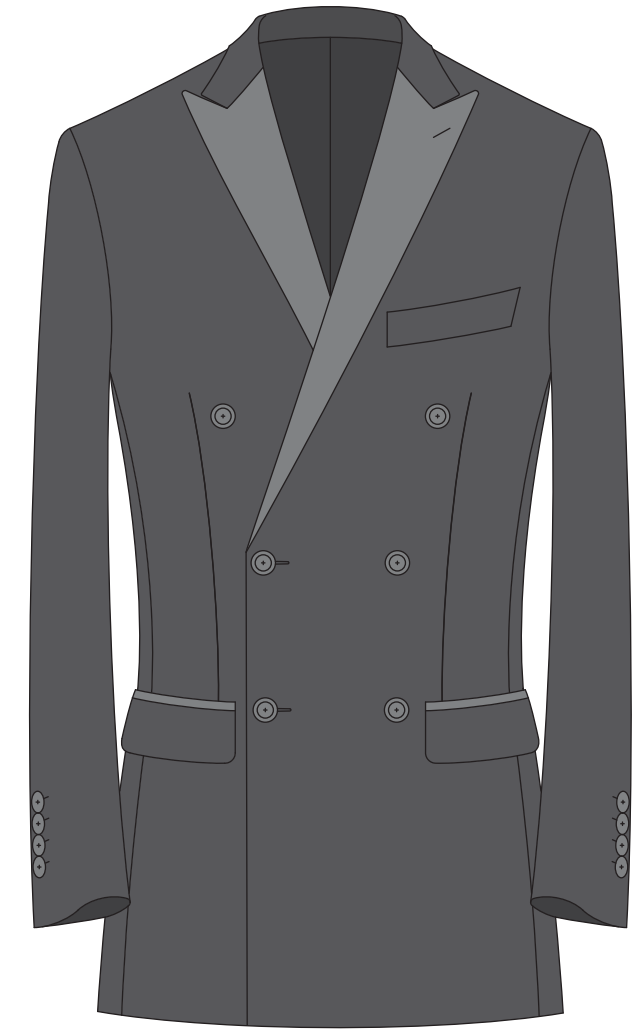
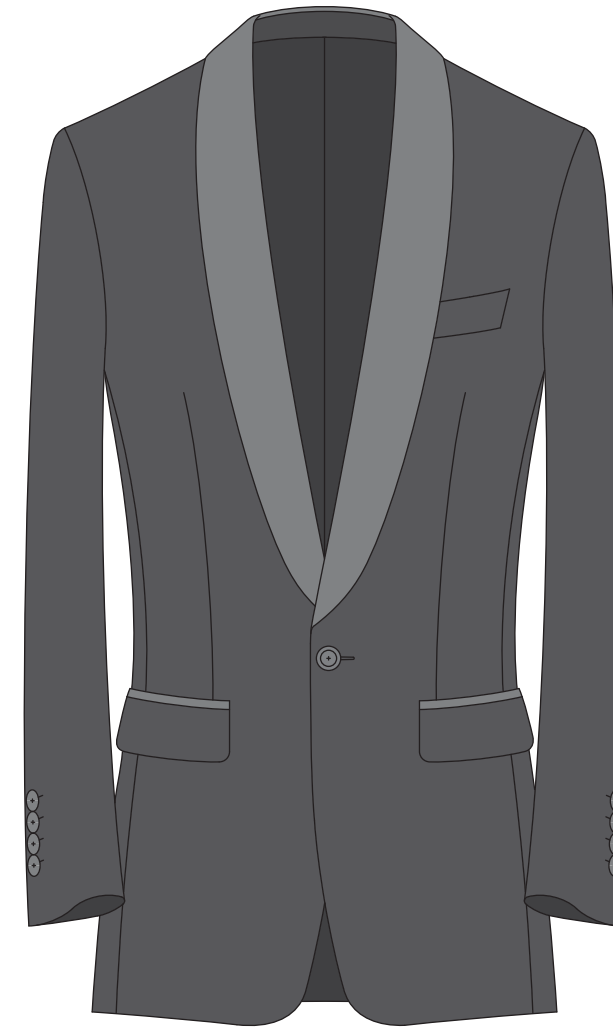
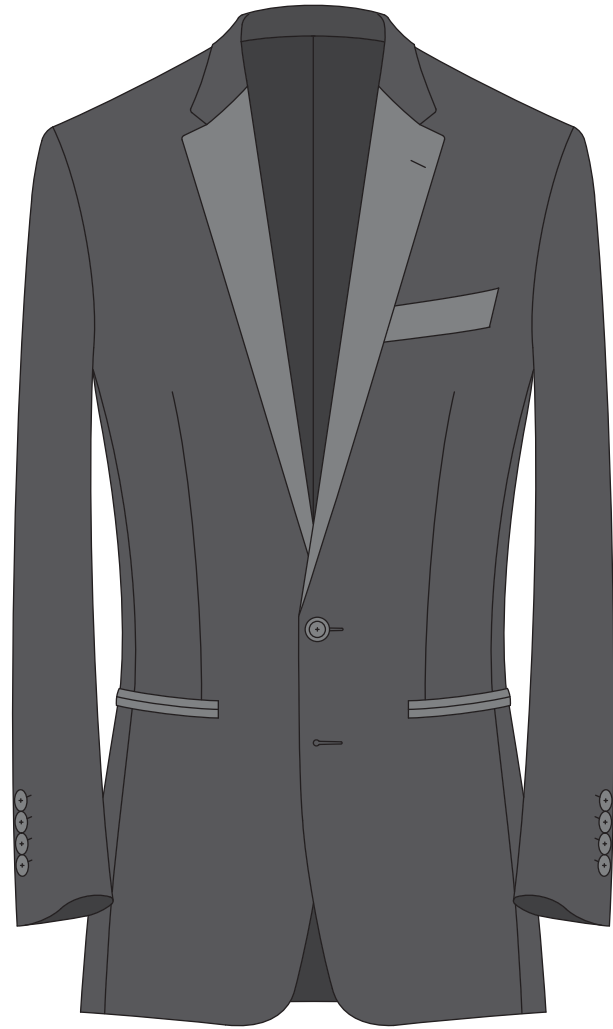
ABCDEFGHIJKLMNOPQRSTUVWXYZ
 abcdefghijklmnopqrstuvwxyz
 1234567890?!@*~;\$%()+

Outline

Only CAPITAL letters

ABCDEFGHIJKLMNOPQRSTUVWXYZ
 1234567890?!@*~;\$%()+

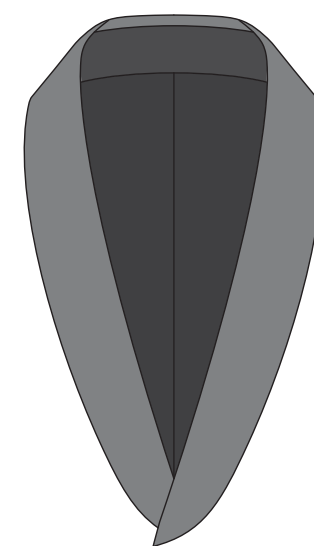
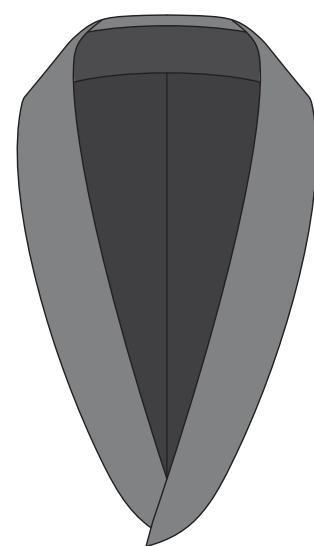
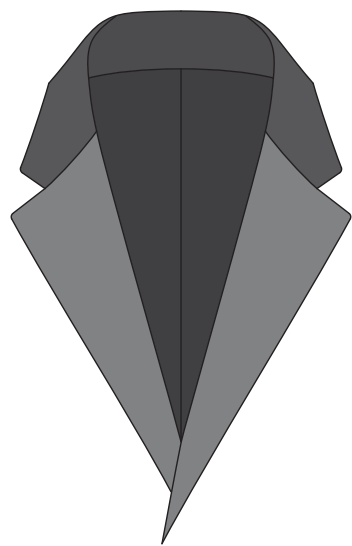
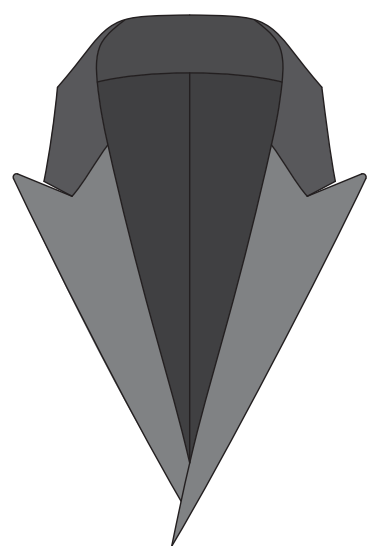
Formal - Jacket Options



Available for all jacket models

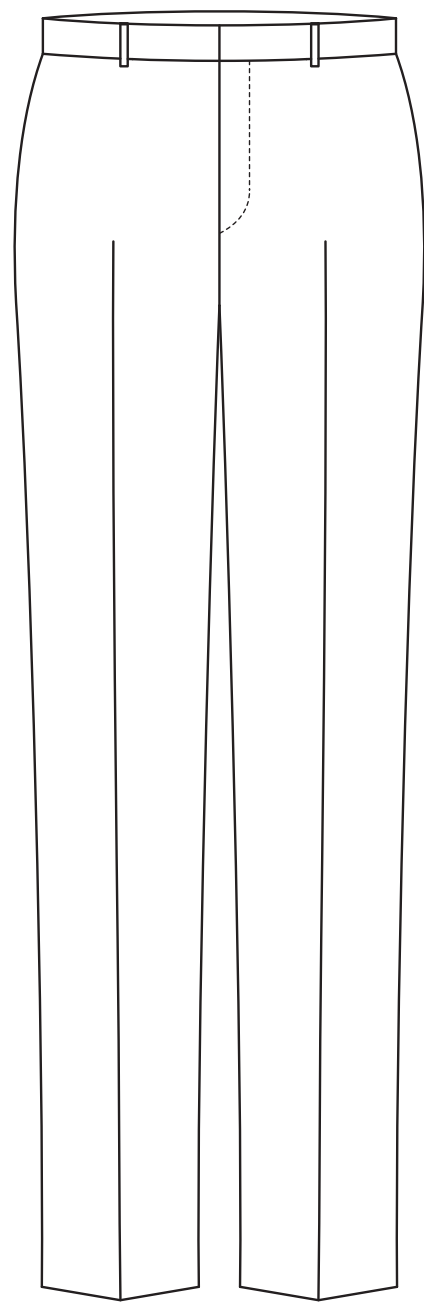
Available for Lapel, Collar, Breast Welt, Lower Pocket Cording

Formal - Collars

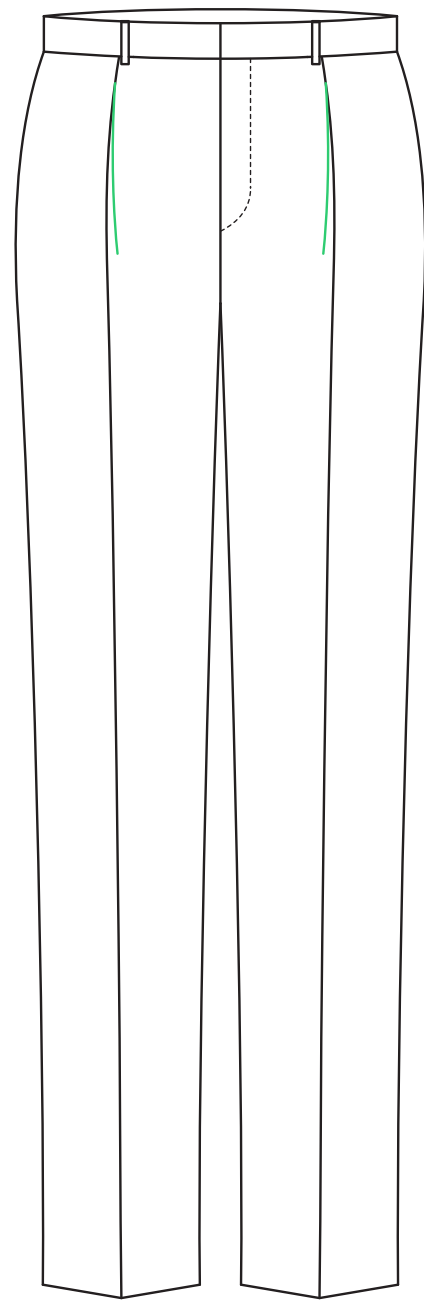


Shawl lapel not available on double breasted models.

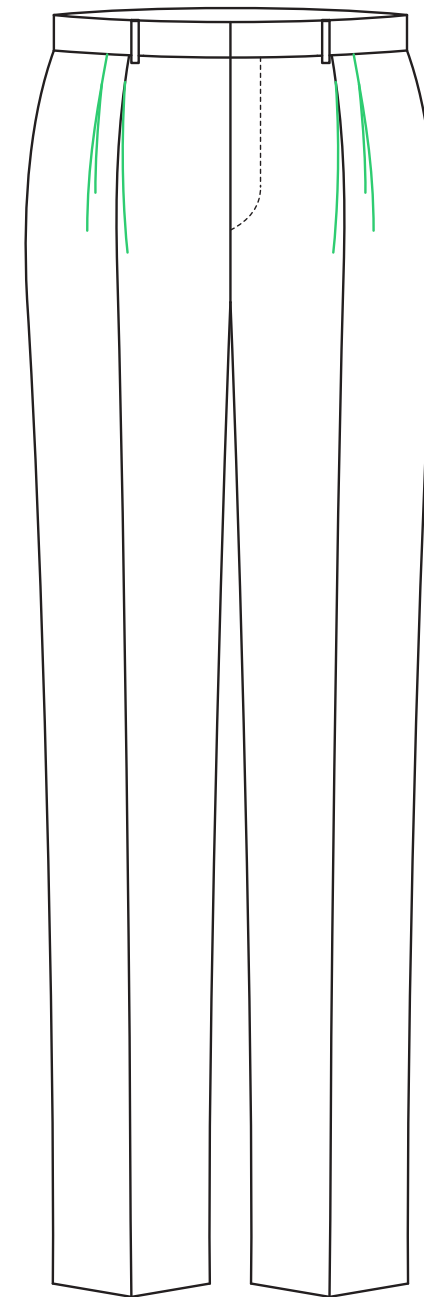
Trouser Models



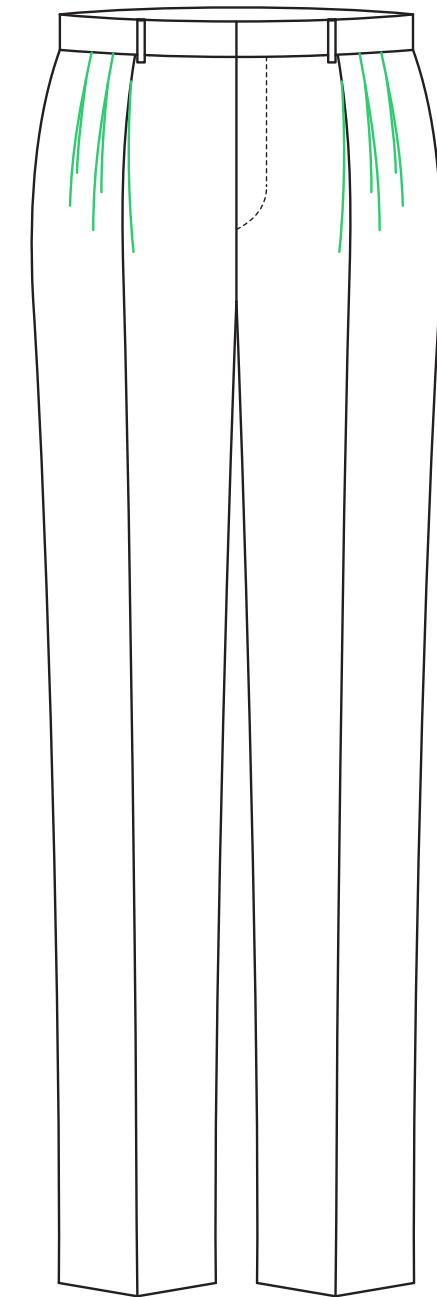
Plain Front



Single Pleat



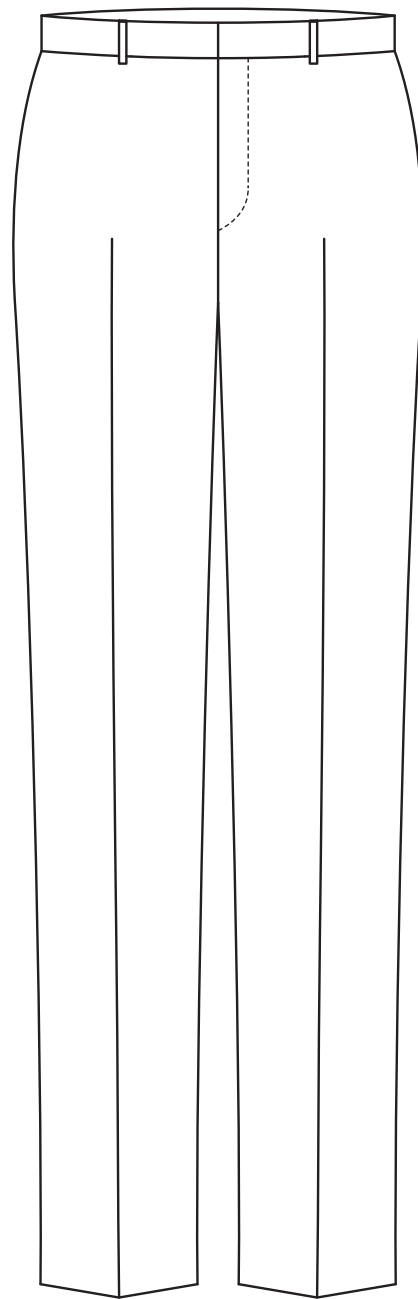
Double Pleat



Triple Pleat

Ordering the T-0T Pant

The T-0T pant will now be the Plain Front Tailored pants with Plain Front being the model choice and Tailored being the block. **Nothing about the physical T-0T pattern has changed, just the name.**



Plain Front Tailored

(aka T-0T model)

Add Item :: DO-470548

Garment Type: CCP

Tailoring Grade: ID Windsor

Coat [Tailored Block Now Available](#)

Model: C202

Block: Tailored

Pant [To order T-0T, select Plain Front & Tailored block](#)

Model: Plain Front

Block: Tailored

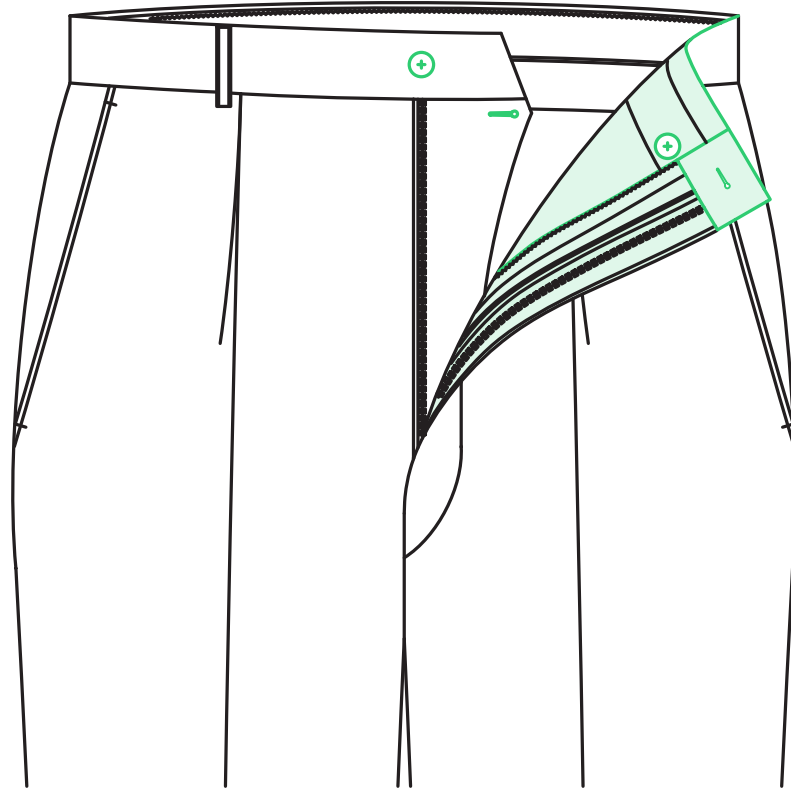
Fabric: Standard
Tailored

Trinity Fabric #: ENTER FABRIC #

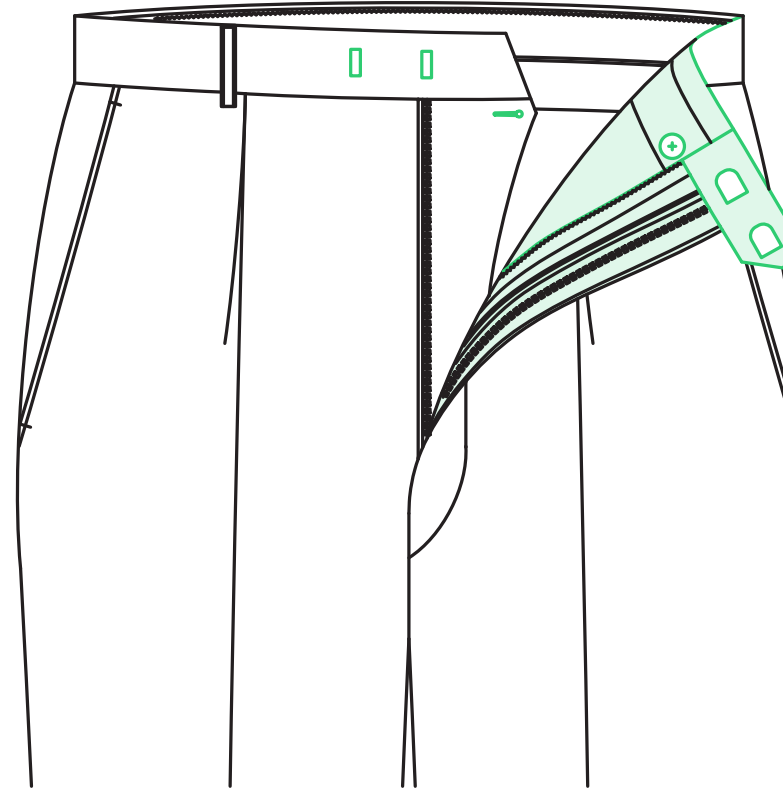
Choose Plain Front Model

Choose Tailored Block

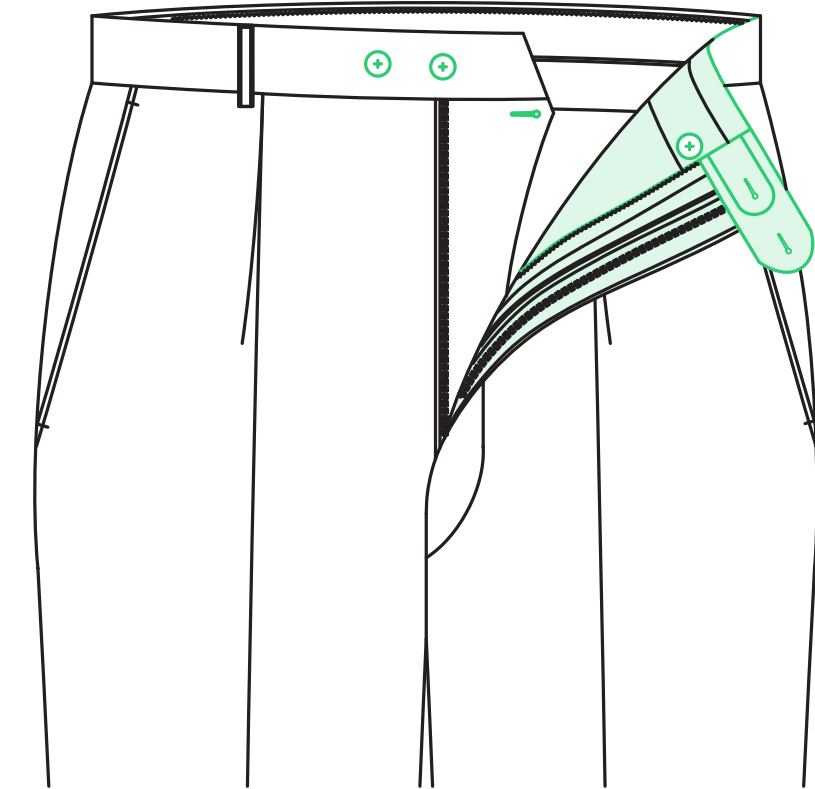
Waistband Extensions



Square Button Through



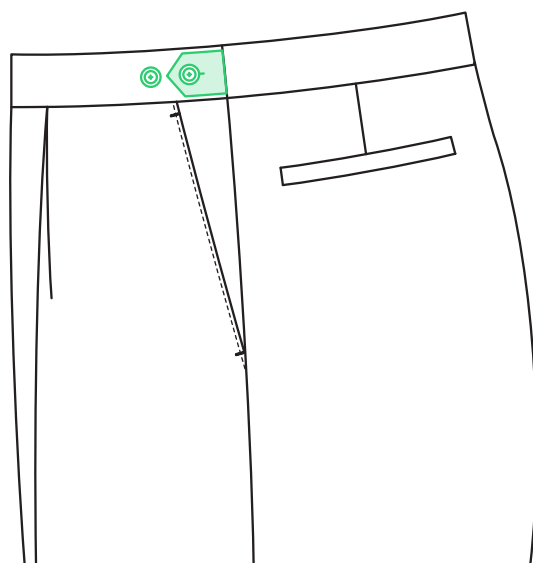
2" Point Extension Double
Hook & Bar



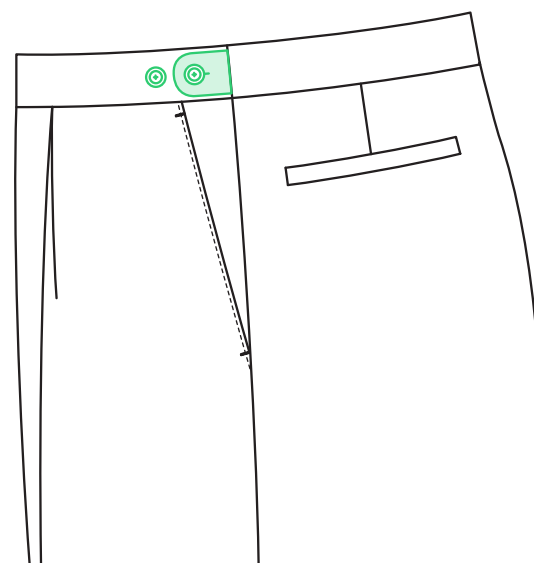
2" Round Extension Tabs with
Double Button

Available Options: None, 2", 2 1/2", 3" (in Double Button, Double Hook and Bar Combinations)

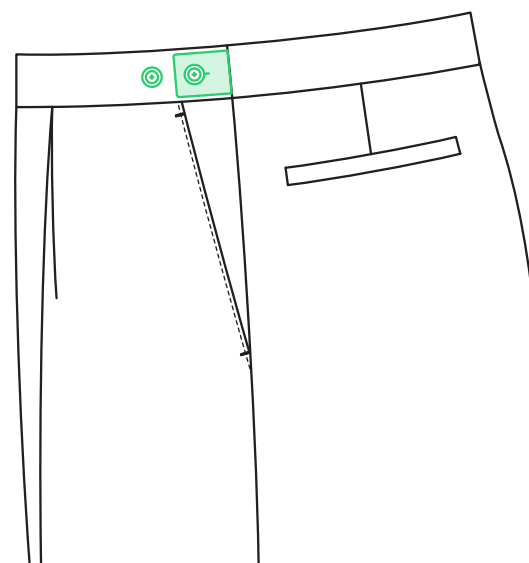
Treatments



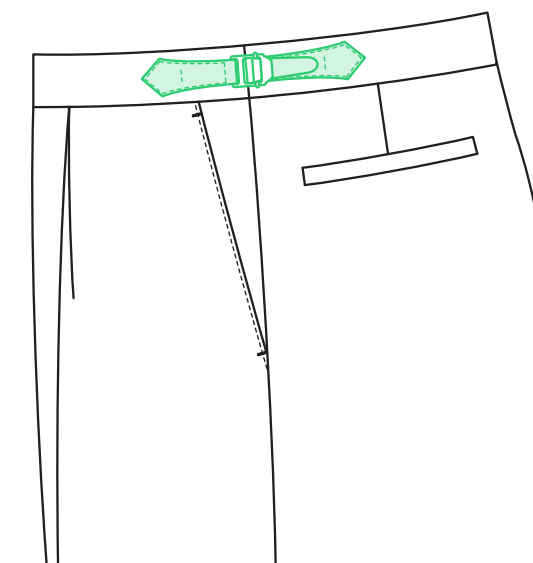
Point Side Tabs & Buttons



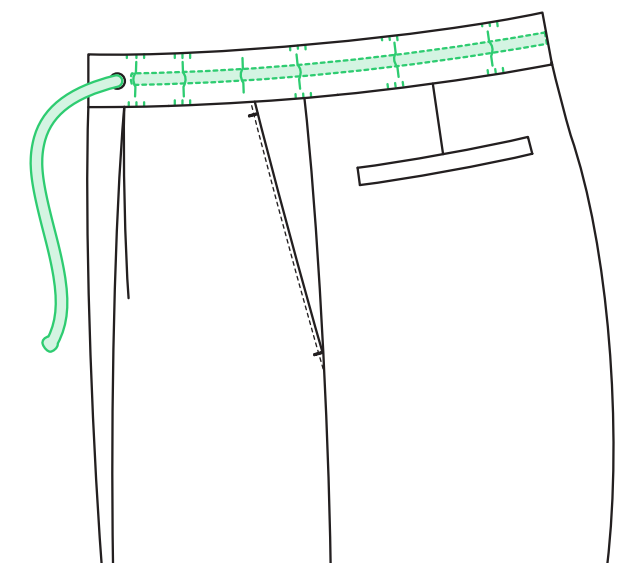
Round Side Tabs & Buttons



Square Side Tabs & Buttons



Buckle Side Tabs*



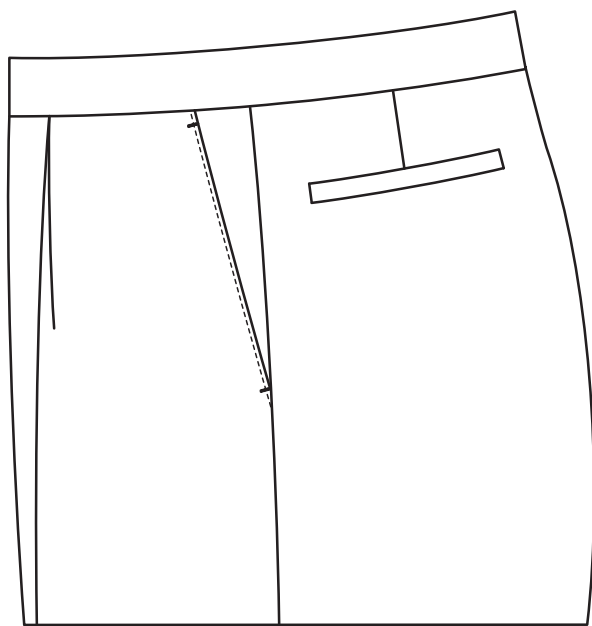
Drawstring

Only available at T2iD

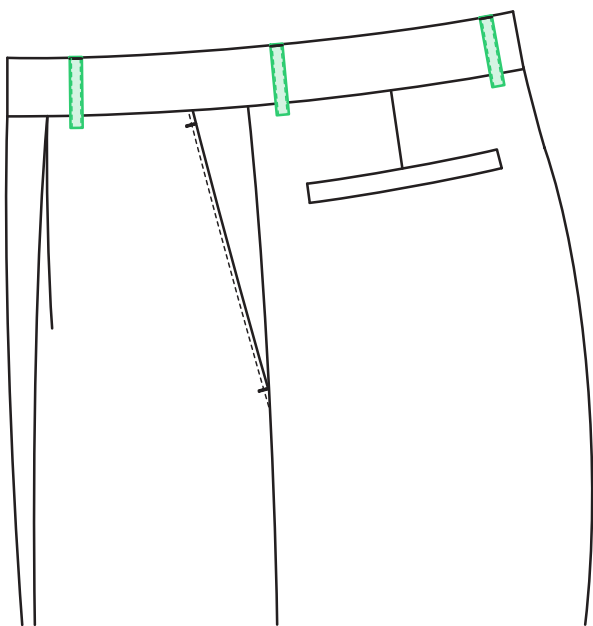
Waistband Treatments are ONLY available when the following Interior Waistband Styles are selected: Waistband Without Curtain or Snugtex

* Buckle available in Nickel or Coffee Bronze

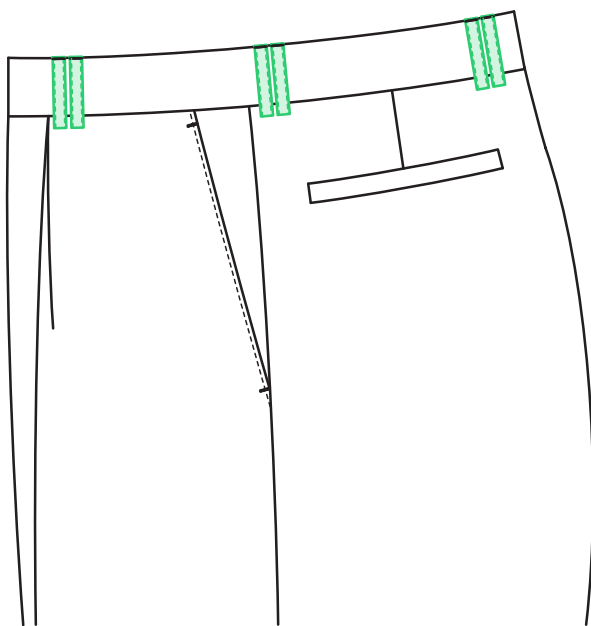
Belt Loops



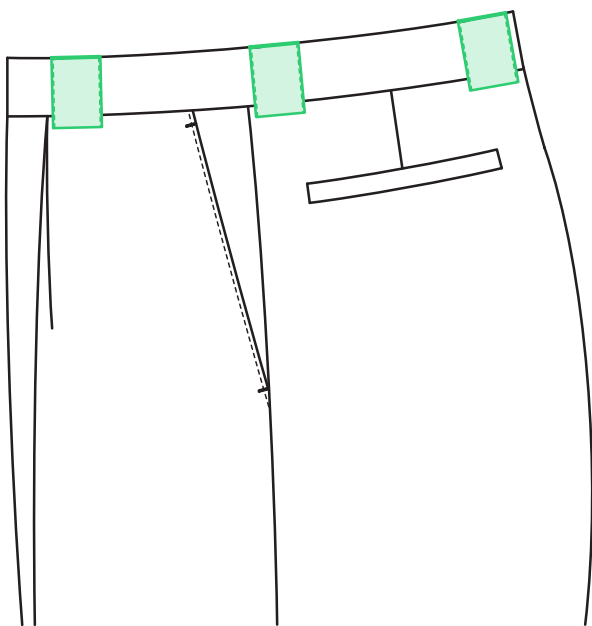
None



3/8" Loops

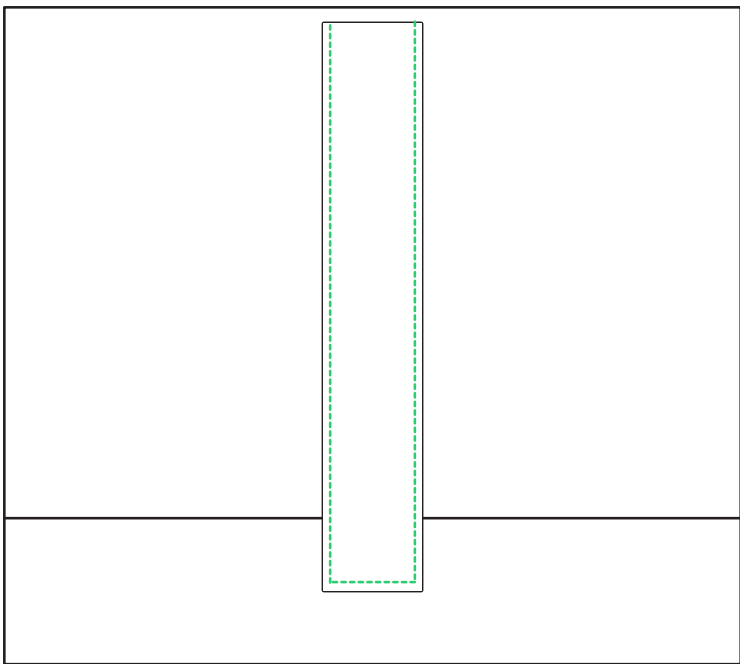


3/8" Double Loops

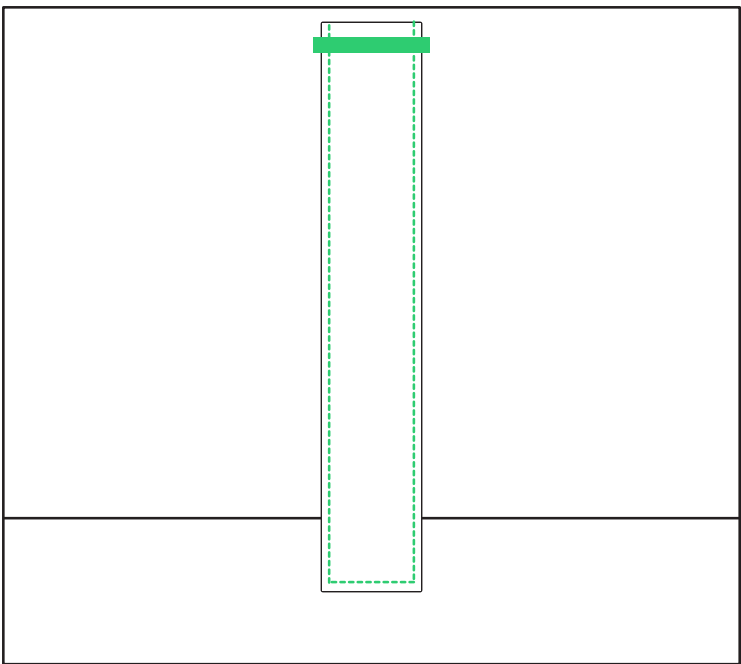


1" Loops

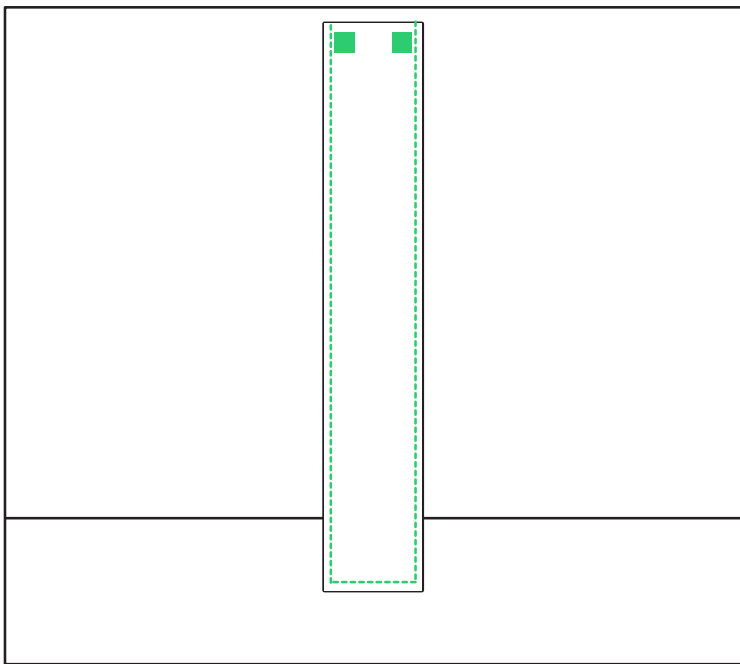
Belt Loop Construction



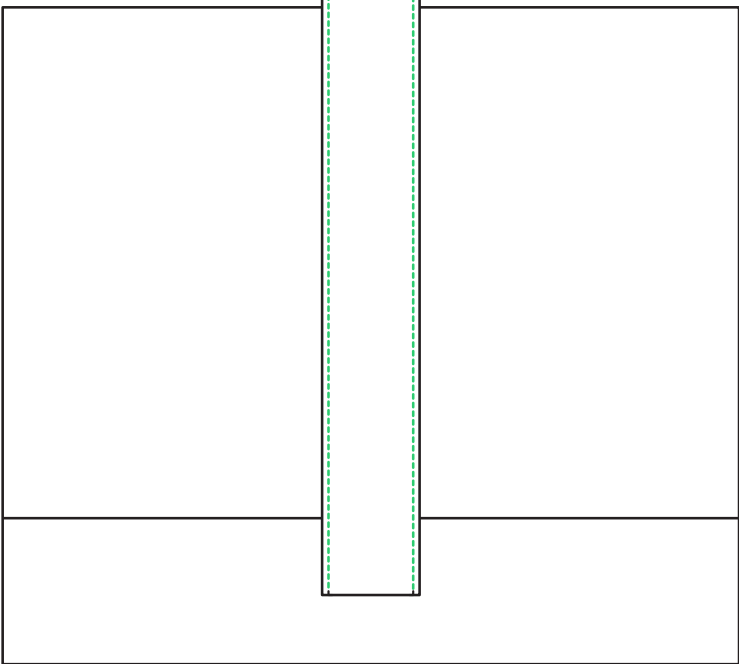
Grown On Loops



Grown On Loops Top Stitch



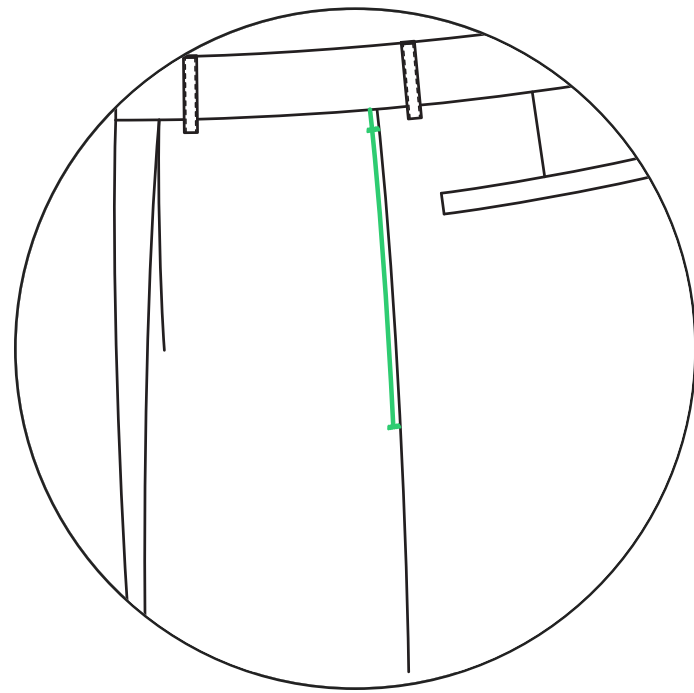
Grown On Loops Tacked



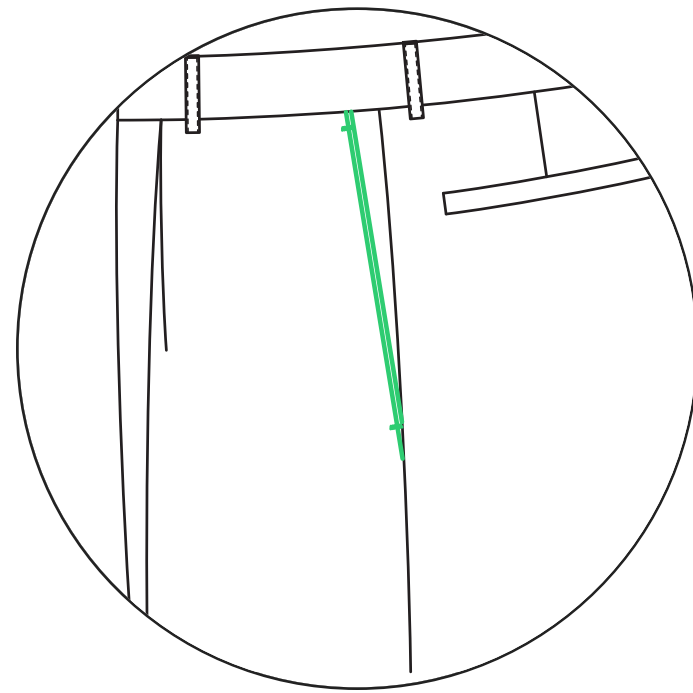
Sewn In Loops*

* Sewn into Interior Waistband

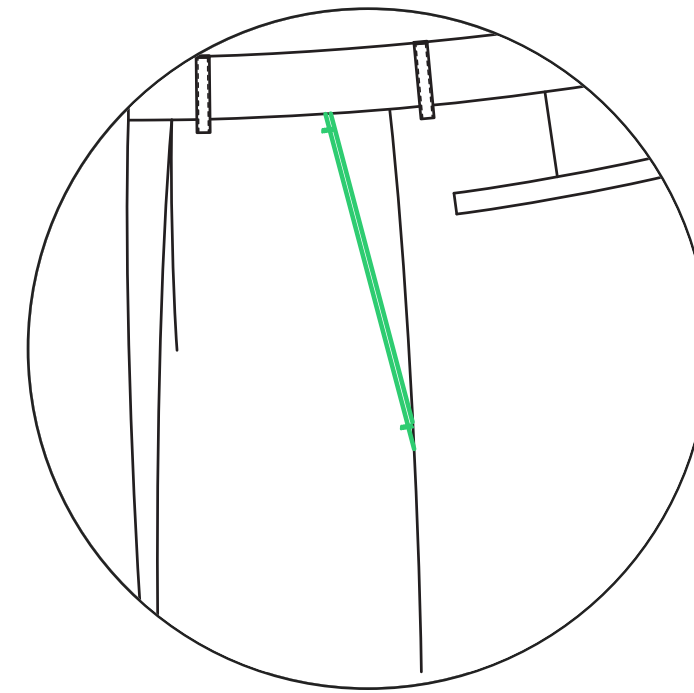
Front Pockets



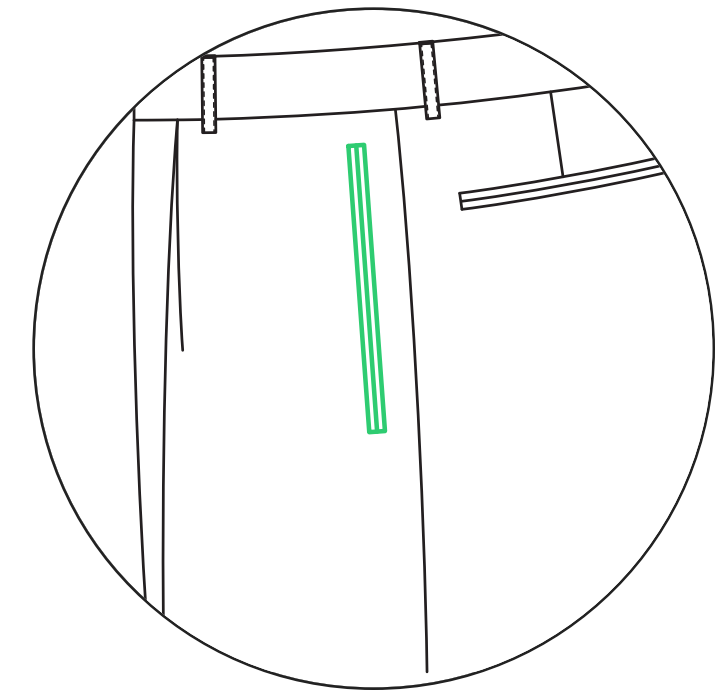
Side Seam



Eighth Top

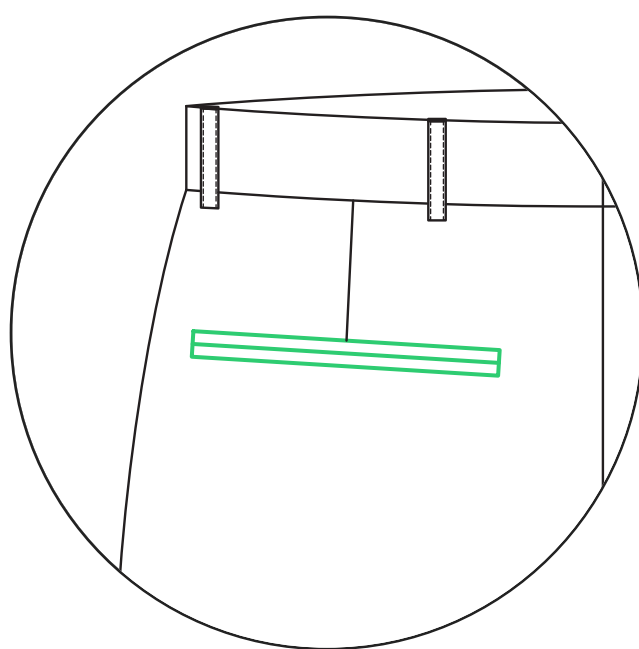


Quarter Top

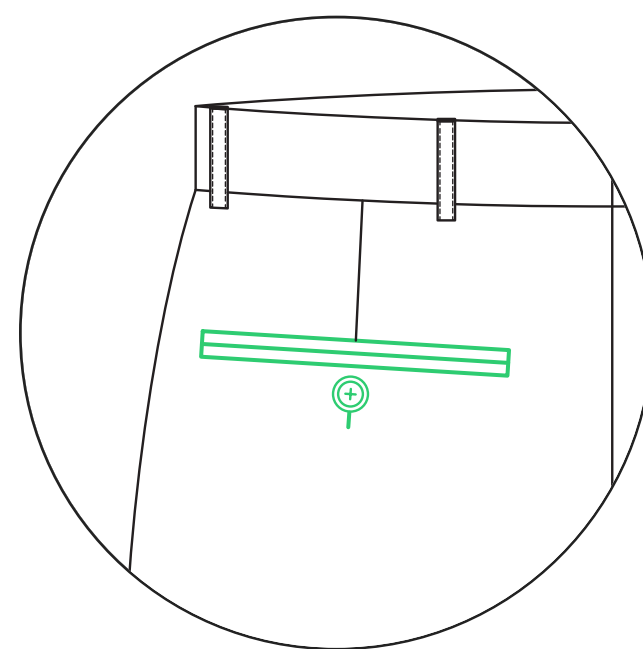


Offset Double Besom

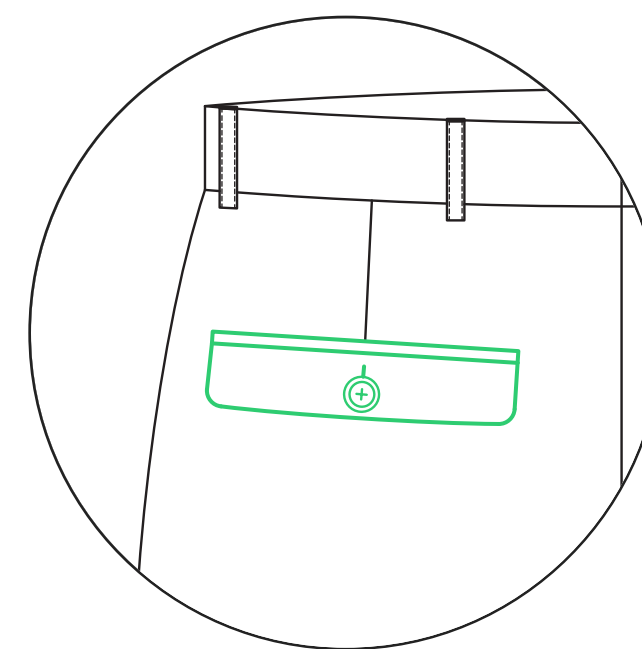
Back Pockets



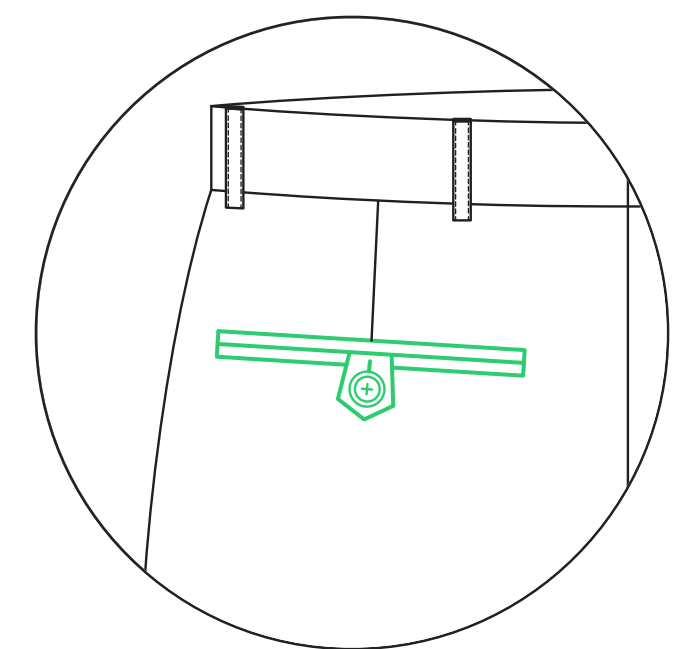
Double Besom



Double Besom with
Button Through



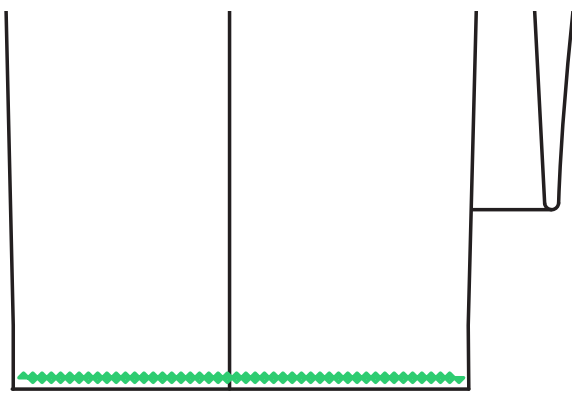
Double Besom with
Flap & Button



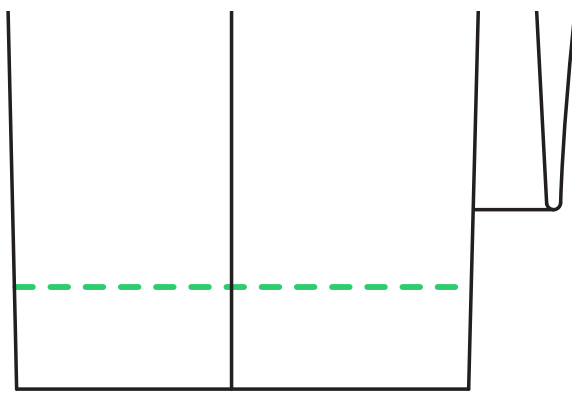
Double Besom with
Point Tab & Button

All Back Pockets are available for Left, Right, or Both sides

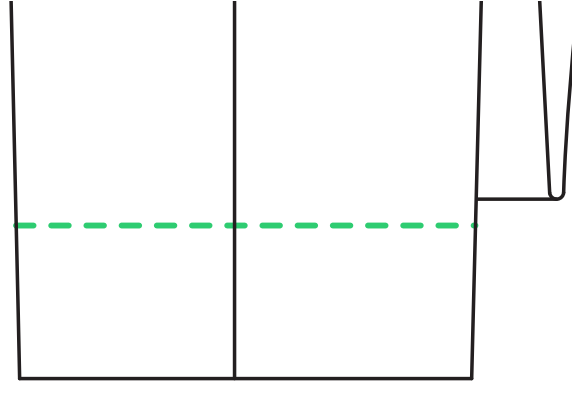
Hem



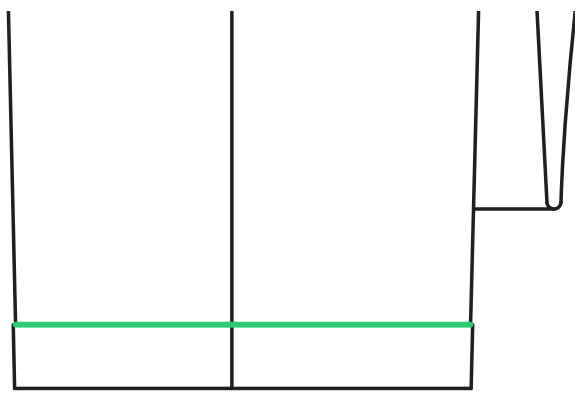
Unfinished



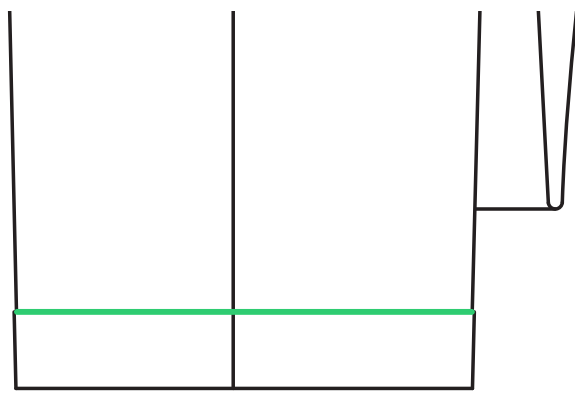
2" Plain Blind



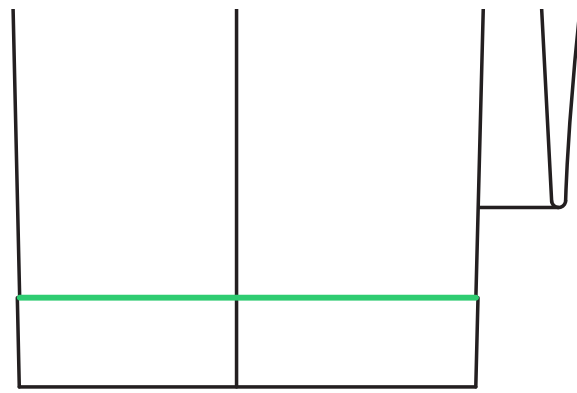
3" Plain Blind



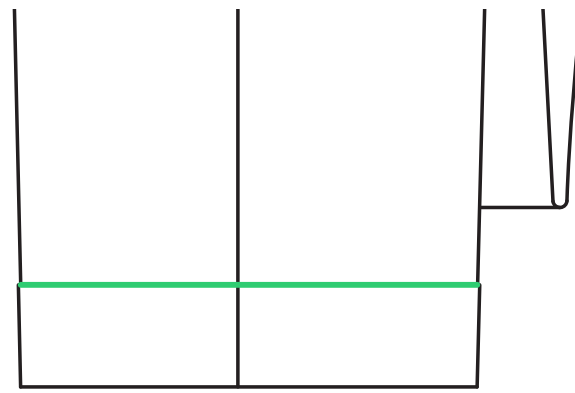
Cuffs 1 1/4"



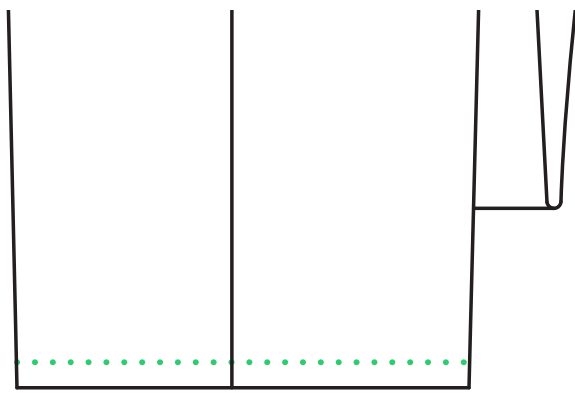
Cuffs 1 1/2"



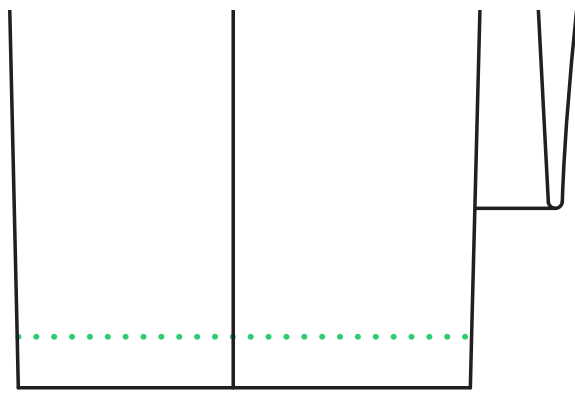
Cuffs 1 3/4"



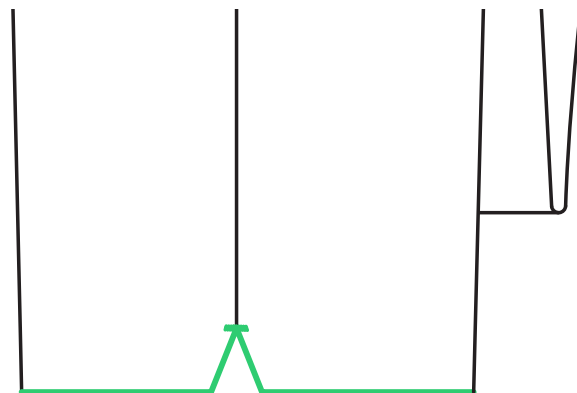
Cuffs 2"



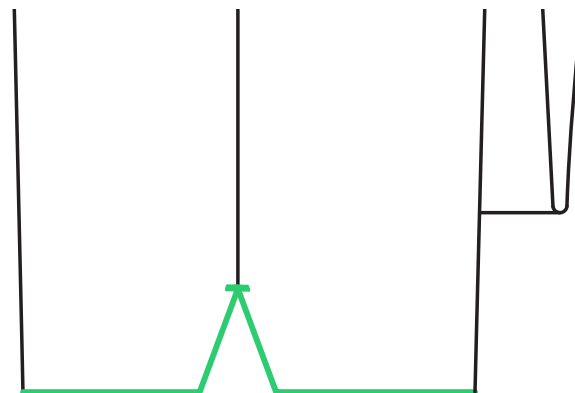
1/2" Pic Stitch Rolled



1" Pic Stitch Rolled

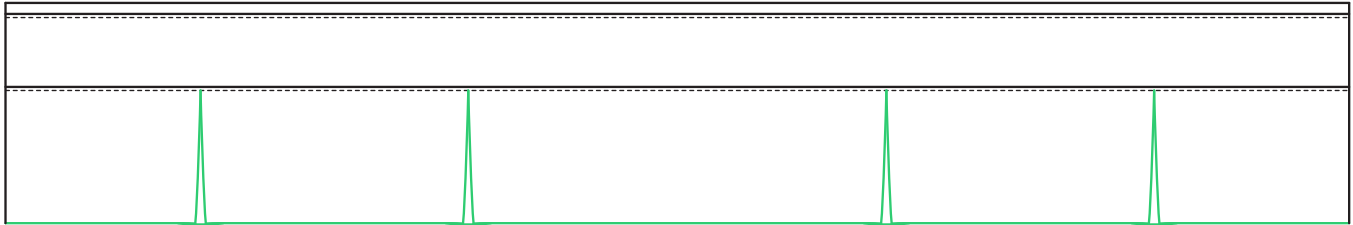


Small Tour Knotch

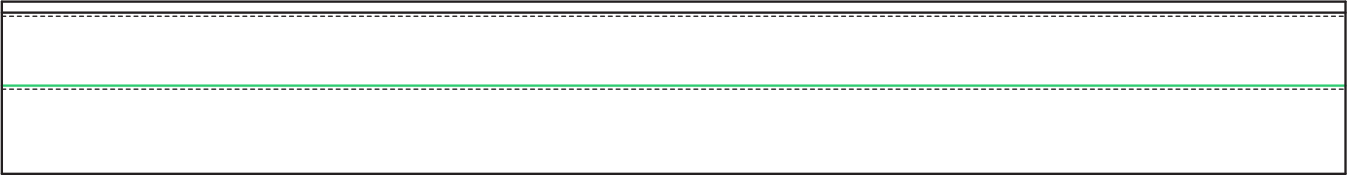


Large Tour Knotch

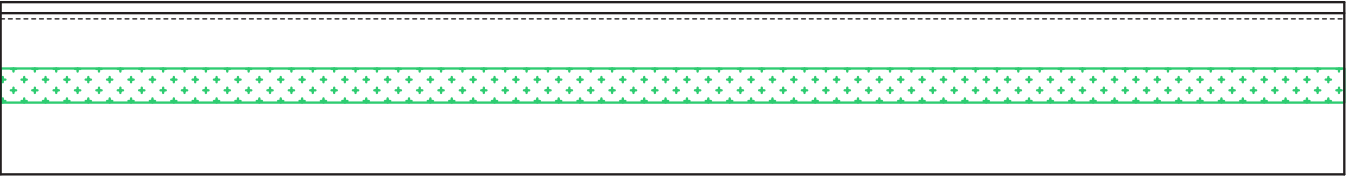
Waistband Styles



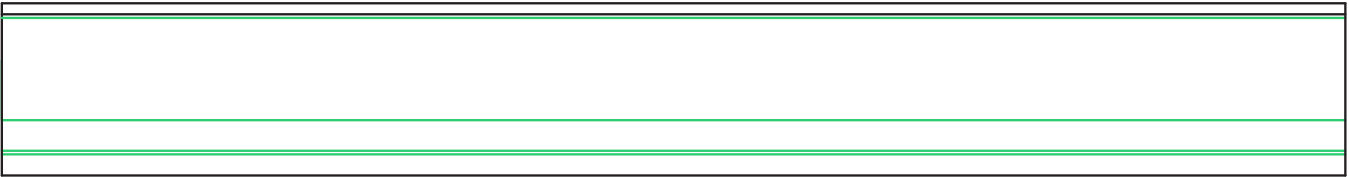
Waistband with Pleated Curtain
Ivory or Black



Waistband without Curtain
Ivory or Black

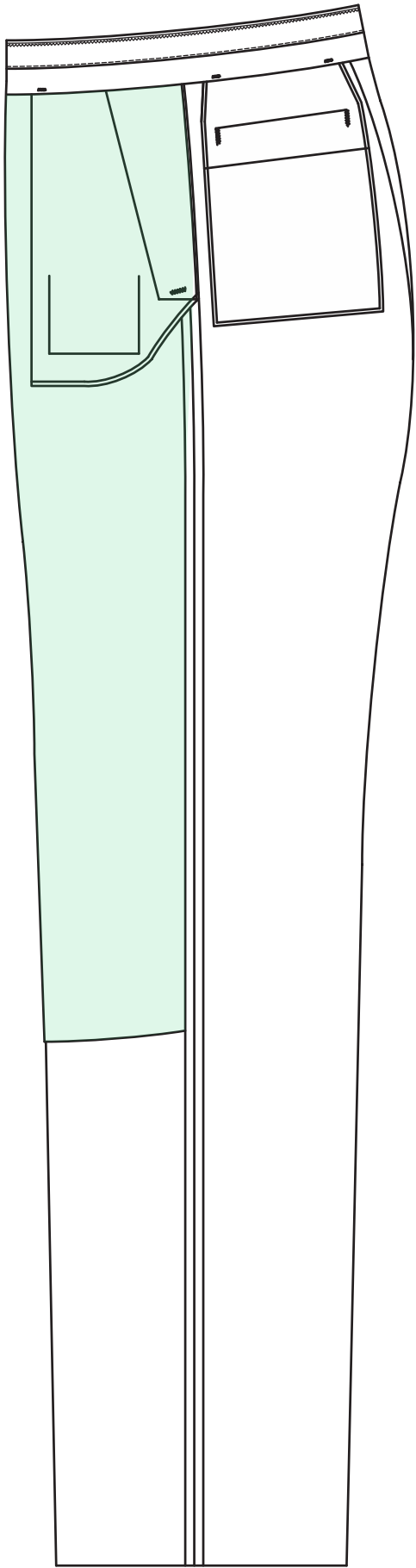


Snugtex
Ivory, Black, Fancy, or Premium Fancy

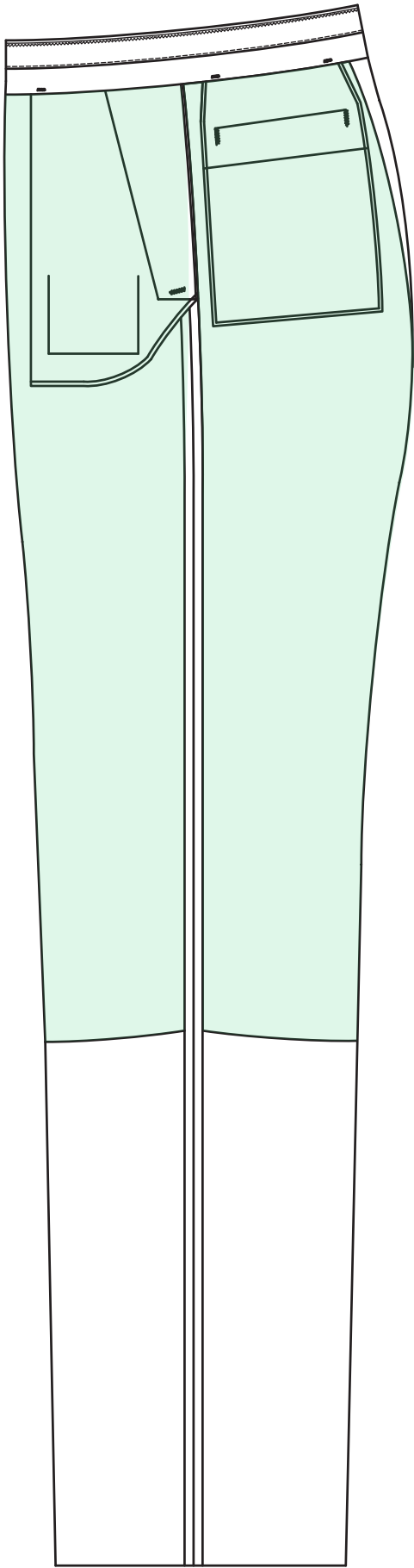


Casual Sport
Exterior Fabric Only

Lining Placement

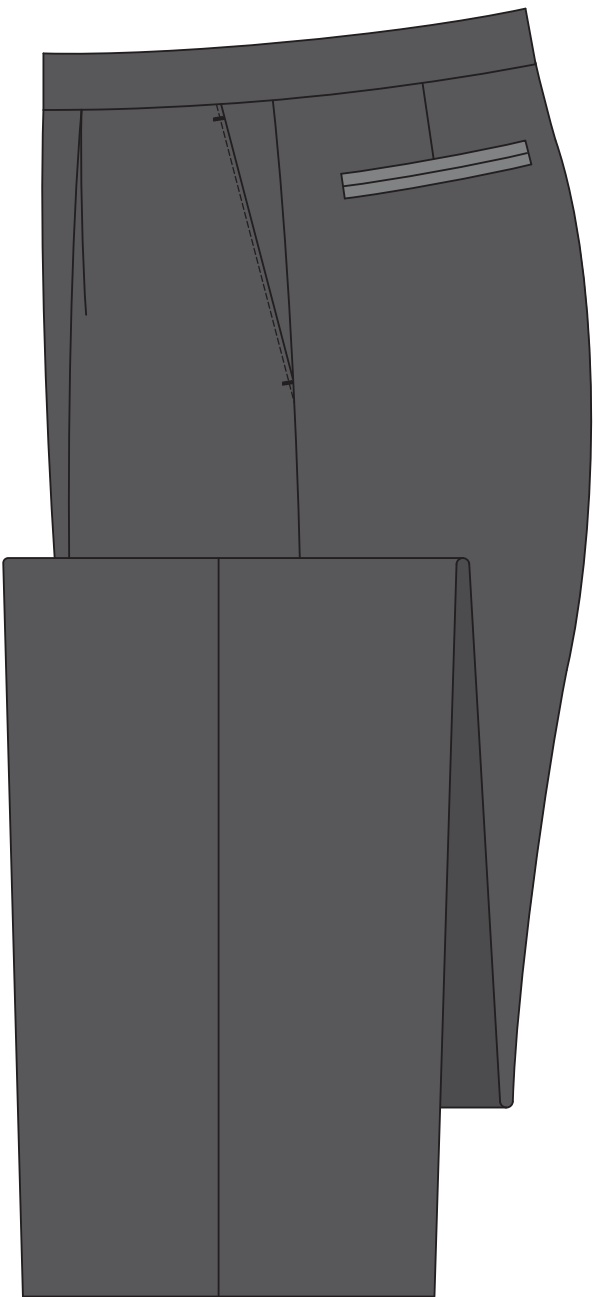


Front Only
4" Below Knee

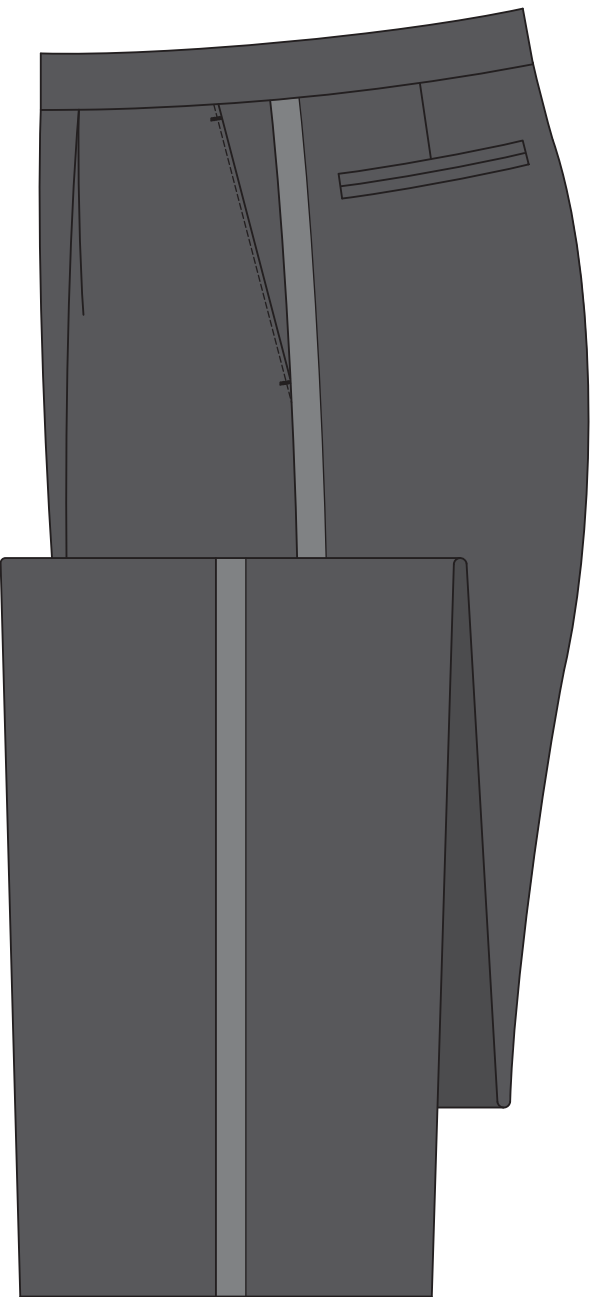


Front & Back
4" Below Knee

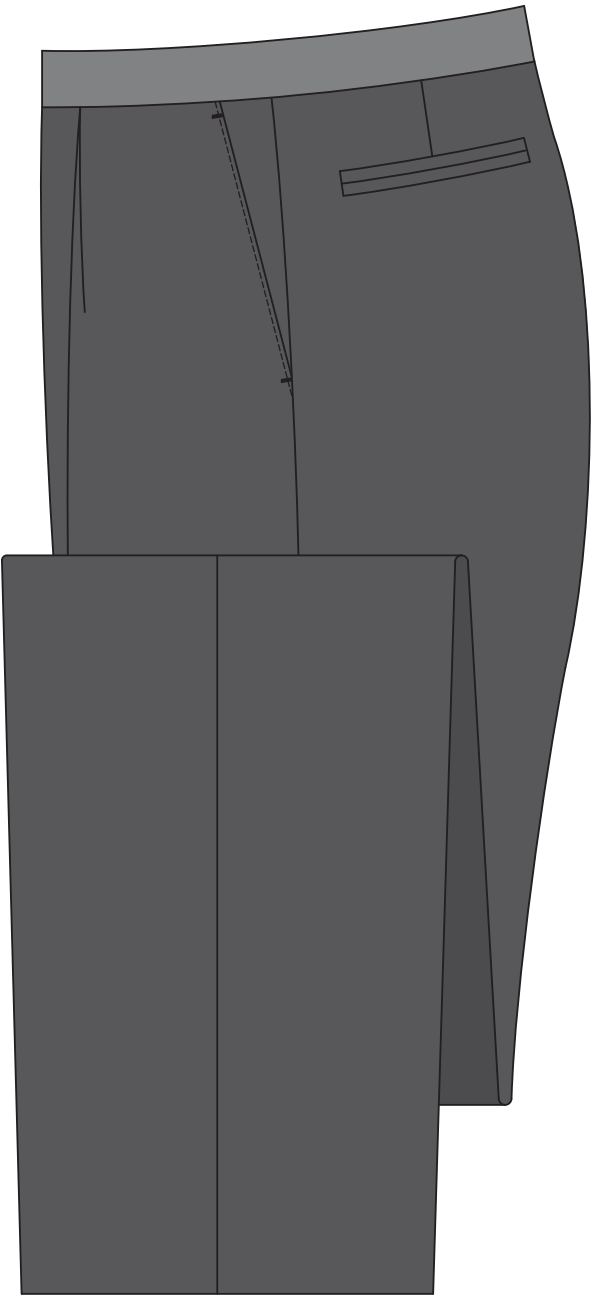
Formal - Pants



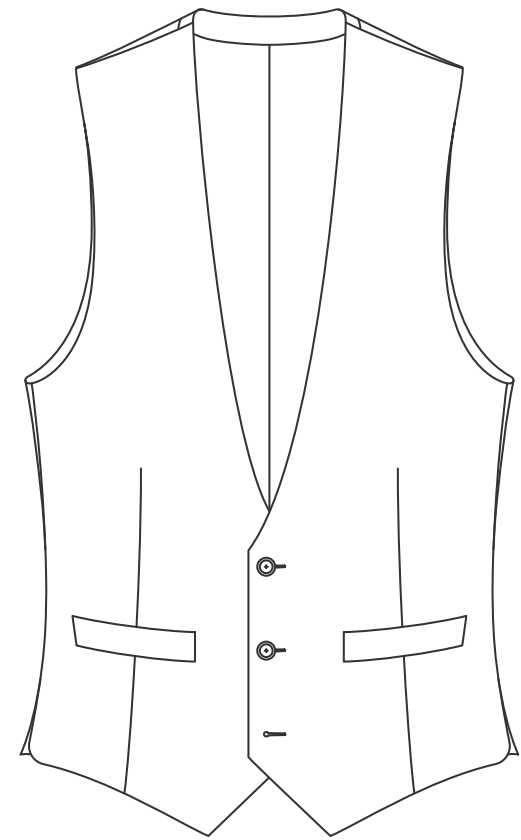
Available for all models



Available for Single Braid, Waistband, Back Pocket Cording



Vest Models



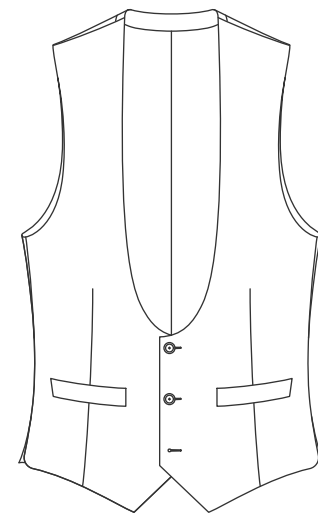
Three Button

Three Button Options

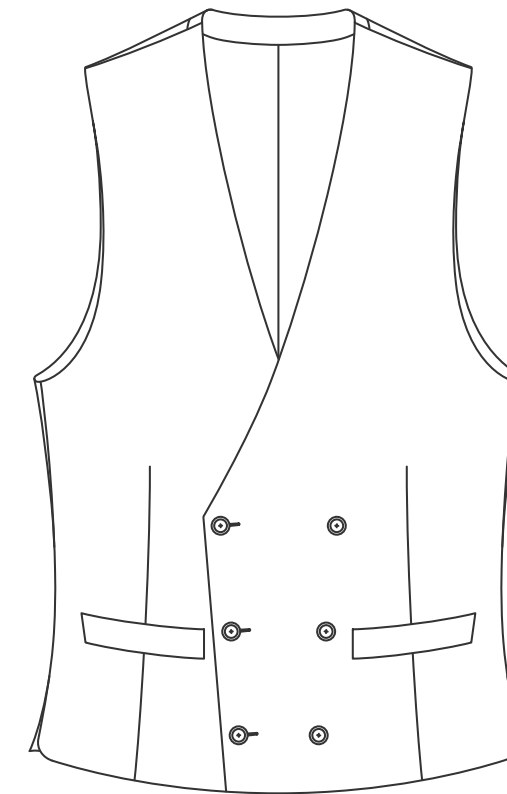
Collar: None

Lapels: None, Shawl

Bottom: Pointed



Available as Horseshoe model



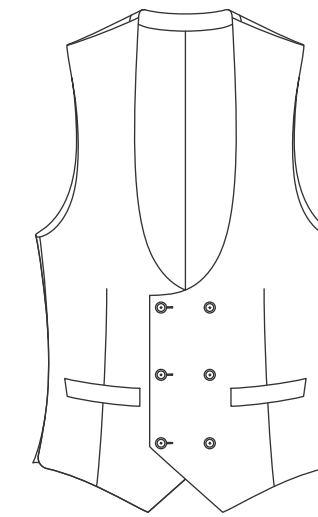
DB 6x3

DB 6x3 Options

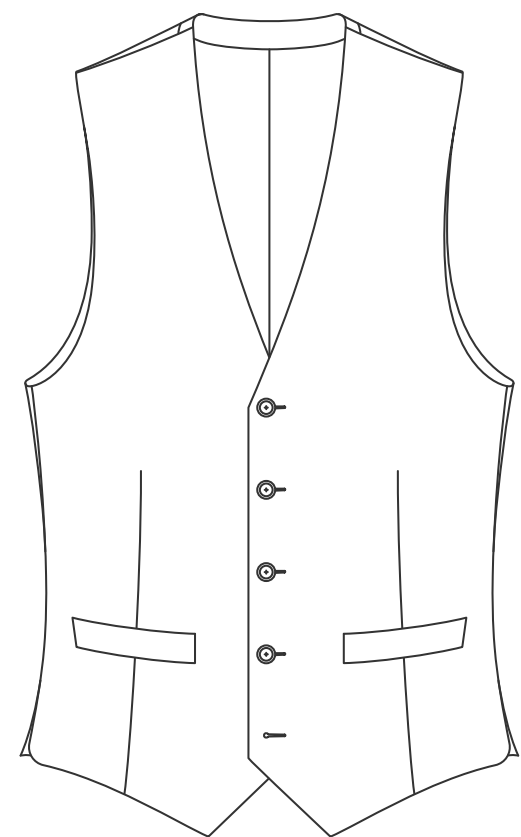
Collar: None, Half

Lapels: None, Notch, Peak, Shawl*

Bottom: Straight



Available as Horseshoe model



Five Button

Five Button Options

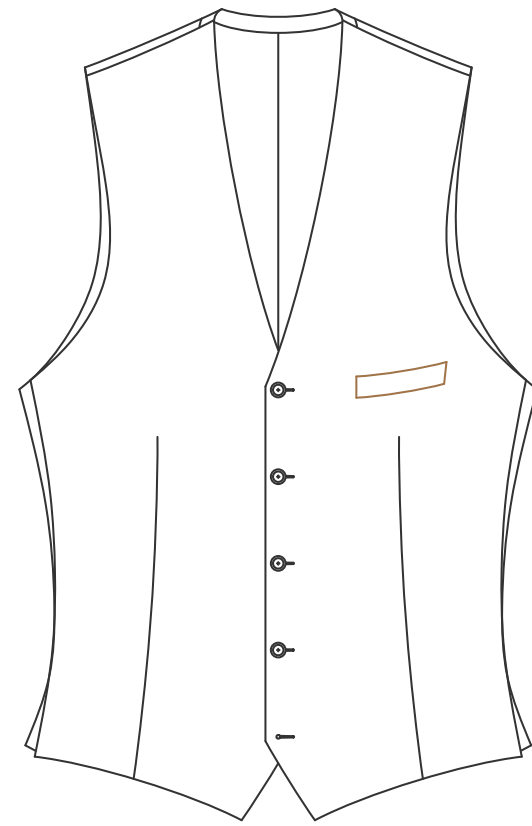
Collar: None, Half, Full

Lapels: None, Notch, Peak

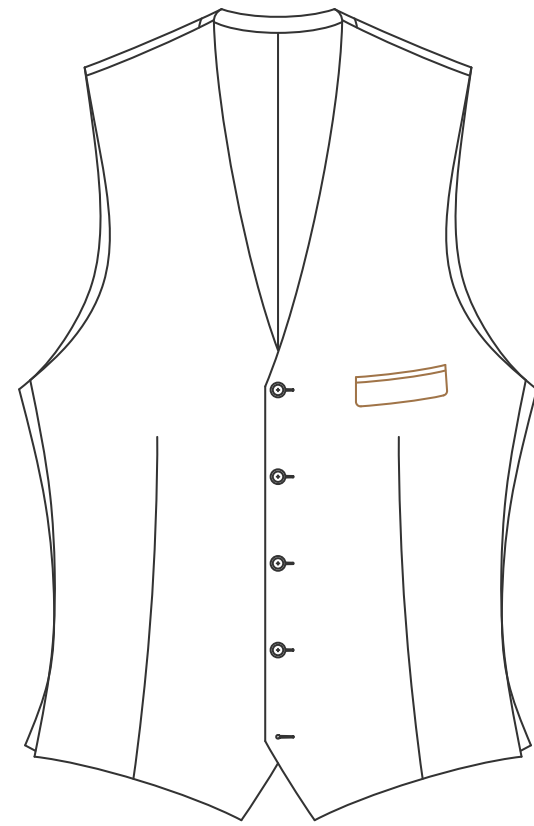
Bottom: Pointed, Rounded

* Collar must be “None”

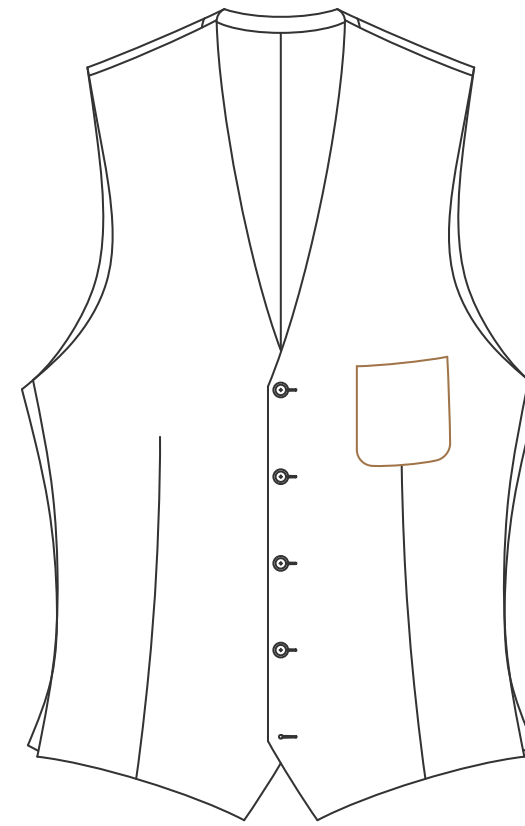
Upper Pockets



Welt



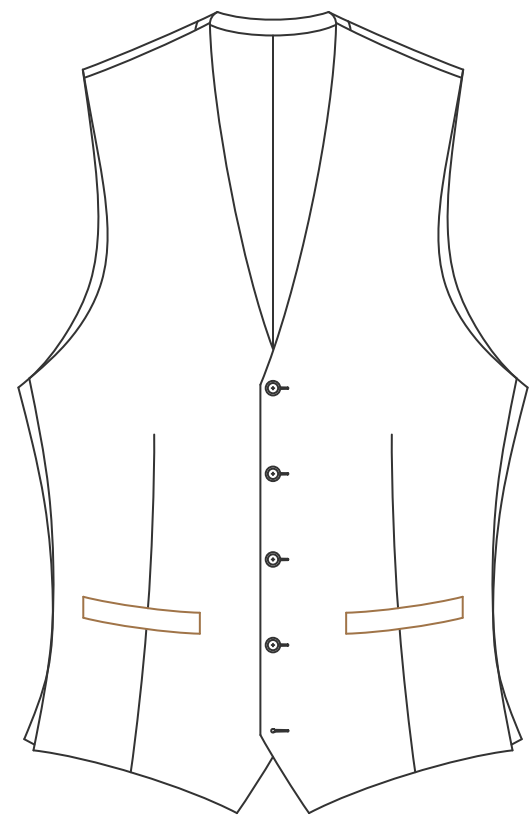
Double Besom with Flap



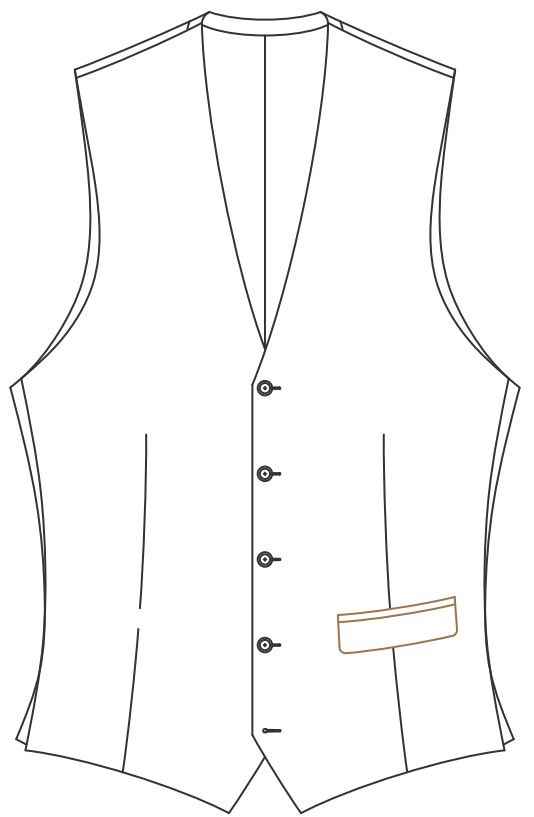
Patch

Upper pockets not available on Horseshoe models

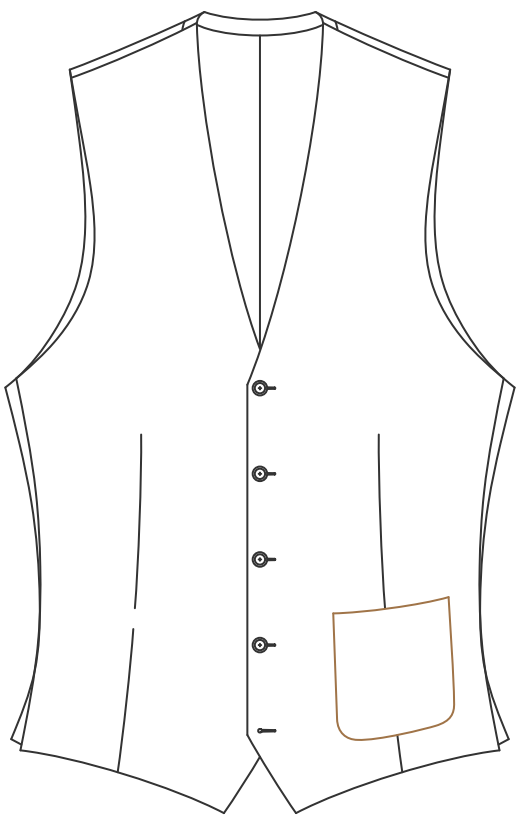
Lower Pockets



Welt (Left & Right)

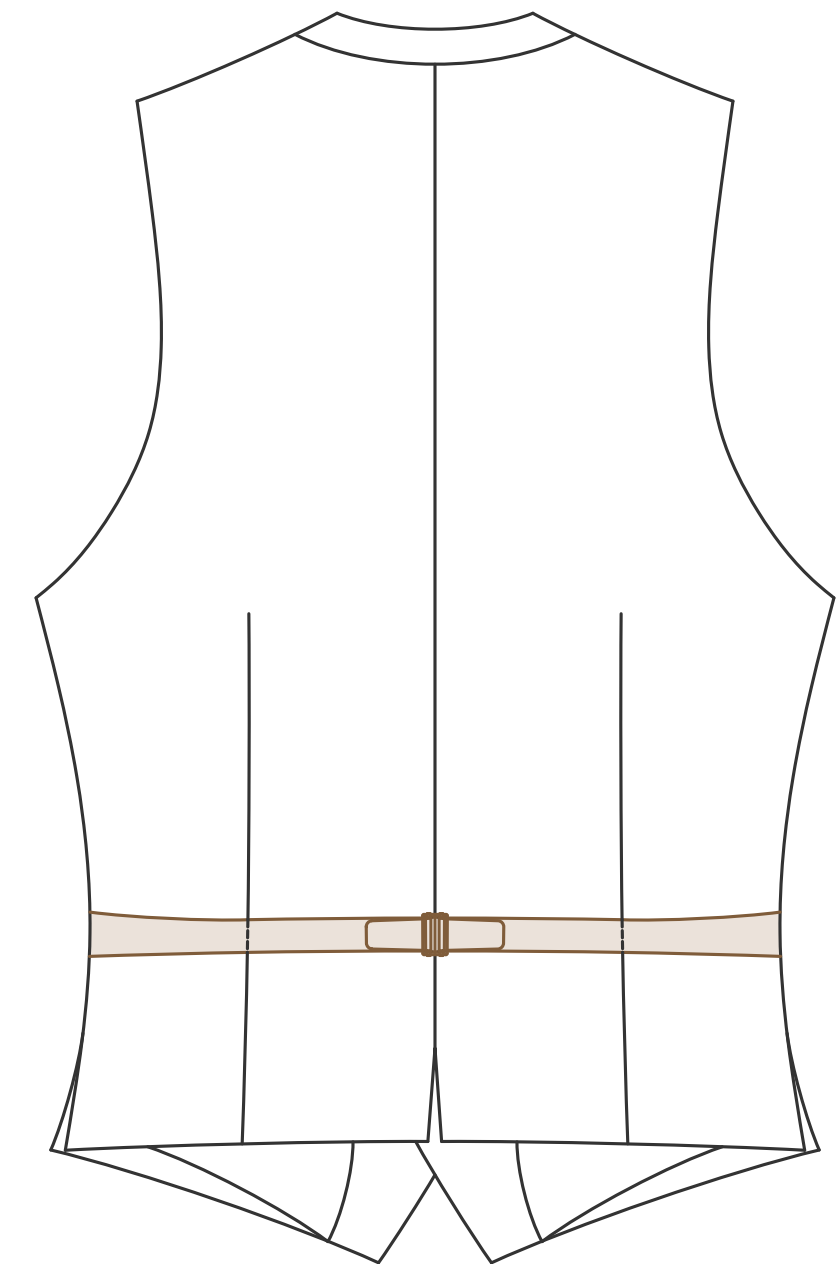


Double Besom with Flap



Patch

Backstrap



Backstrap

Buckle available in Nickel

Formal - Vest Options



Available for all models



Available for Lapel, Collar, Breast Welt, Lower Pocket Cording